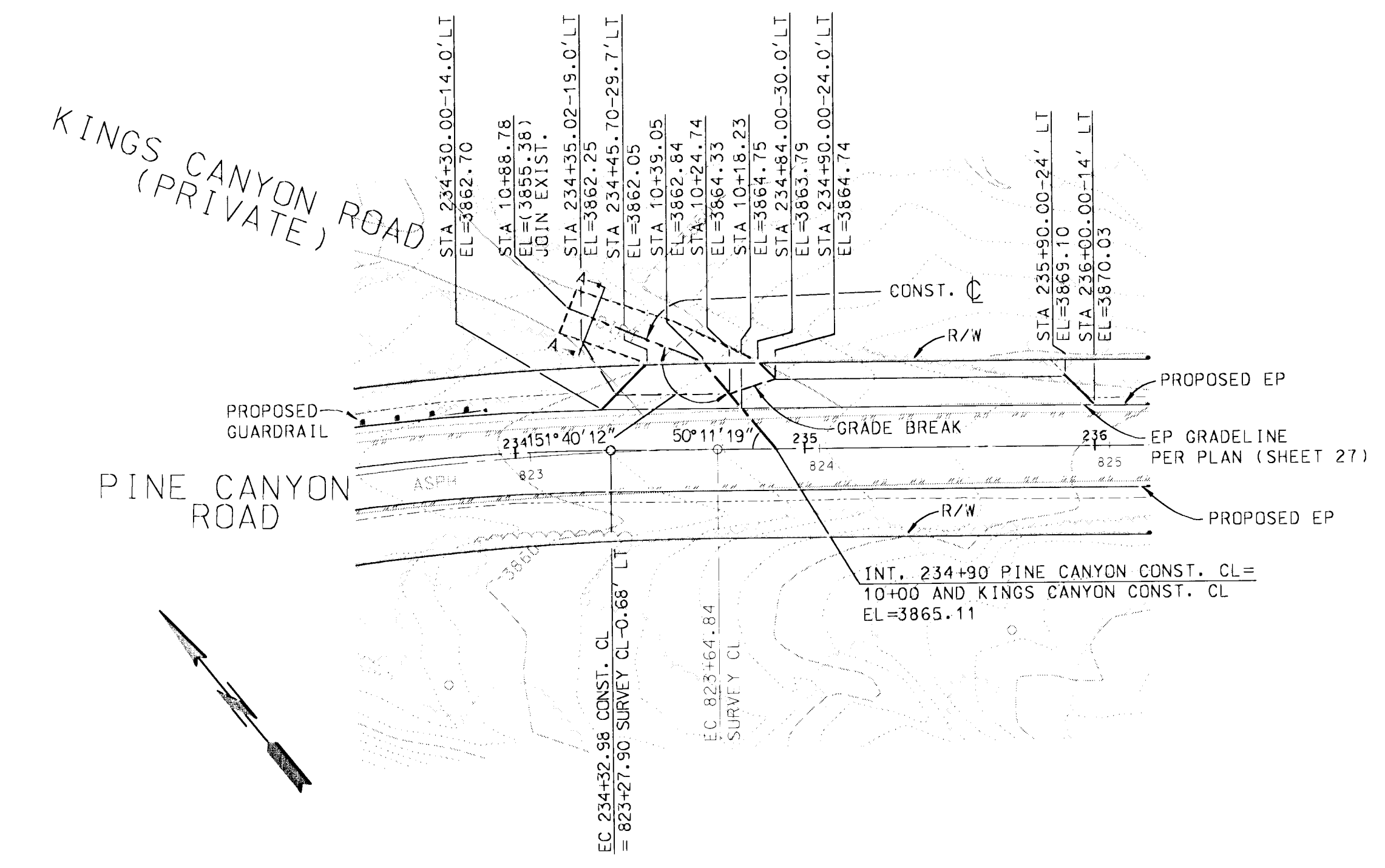
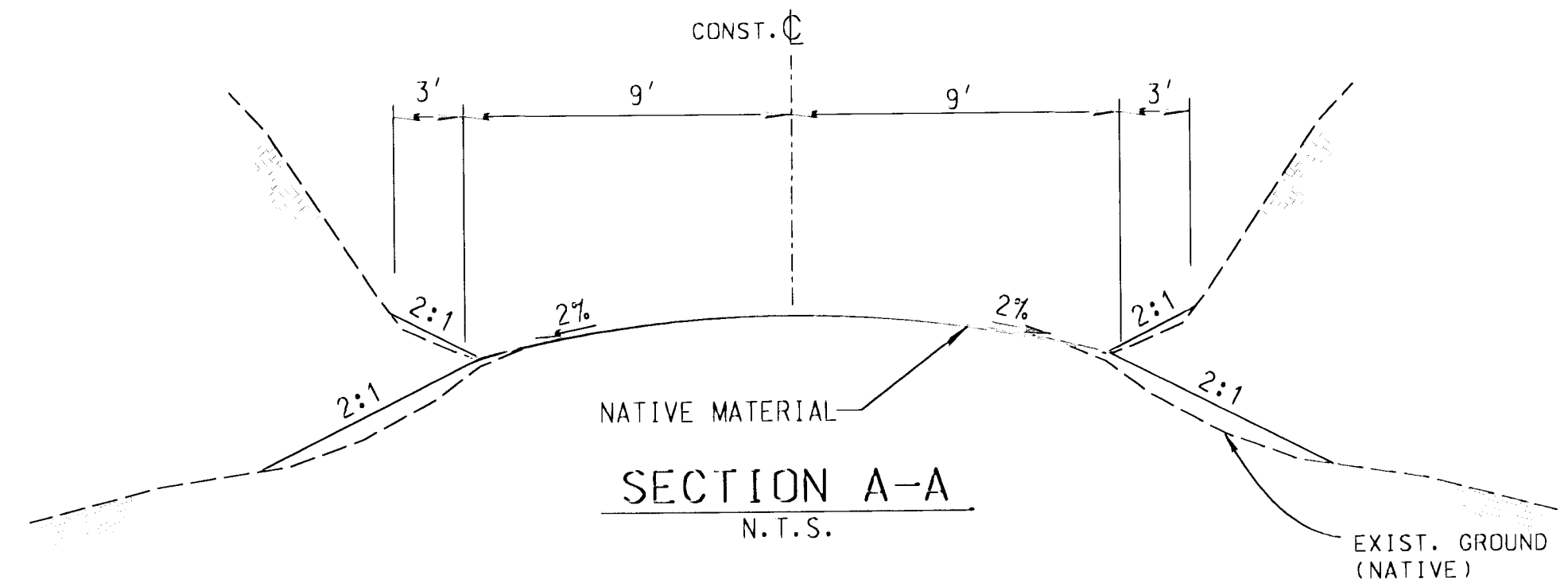
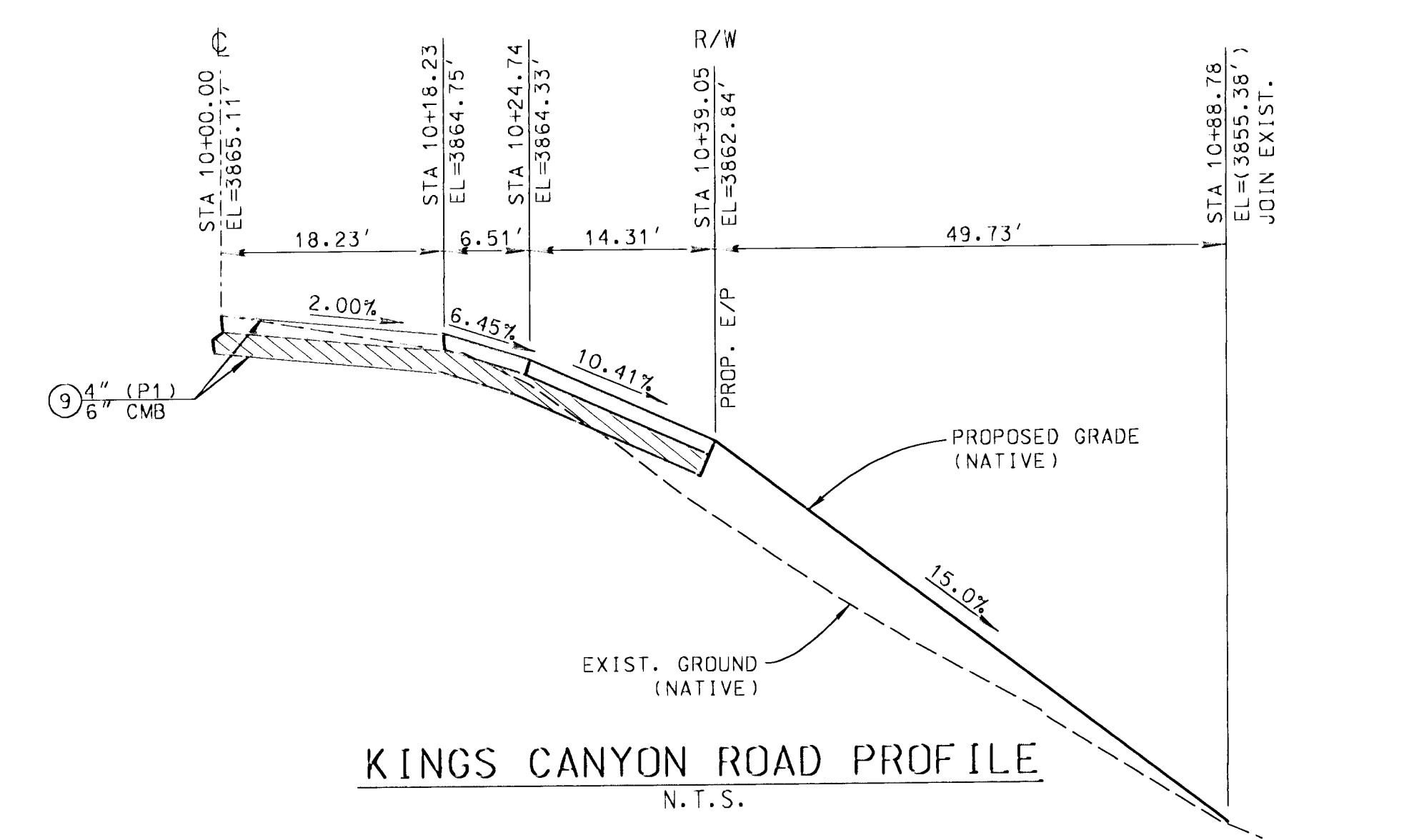
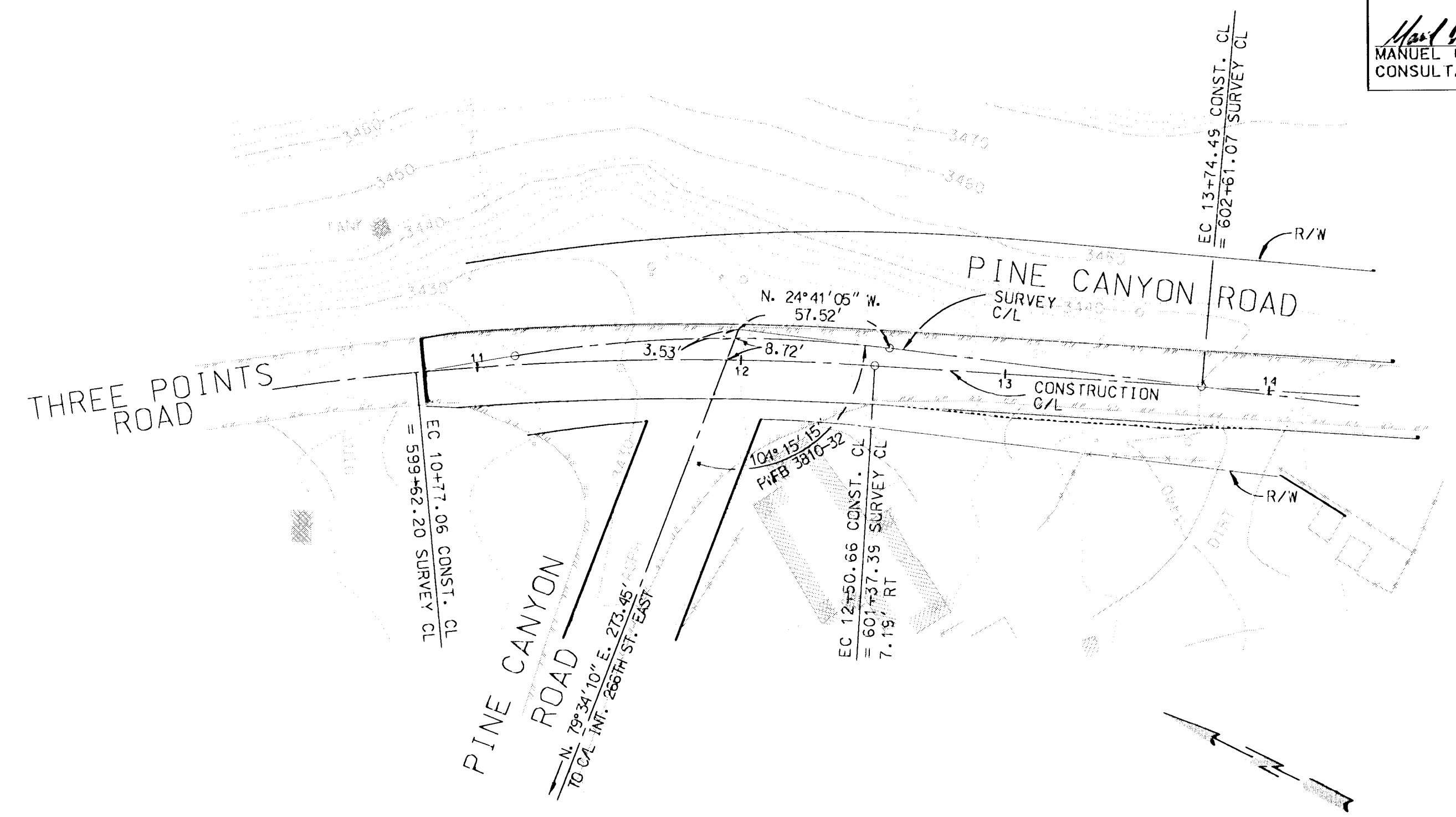


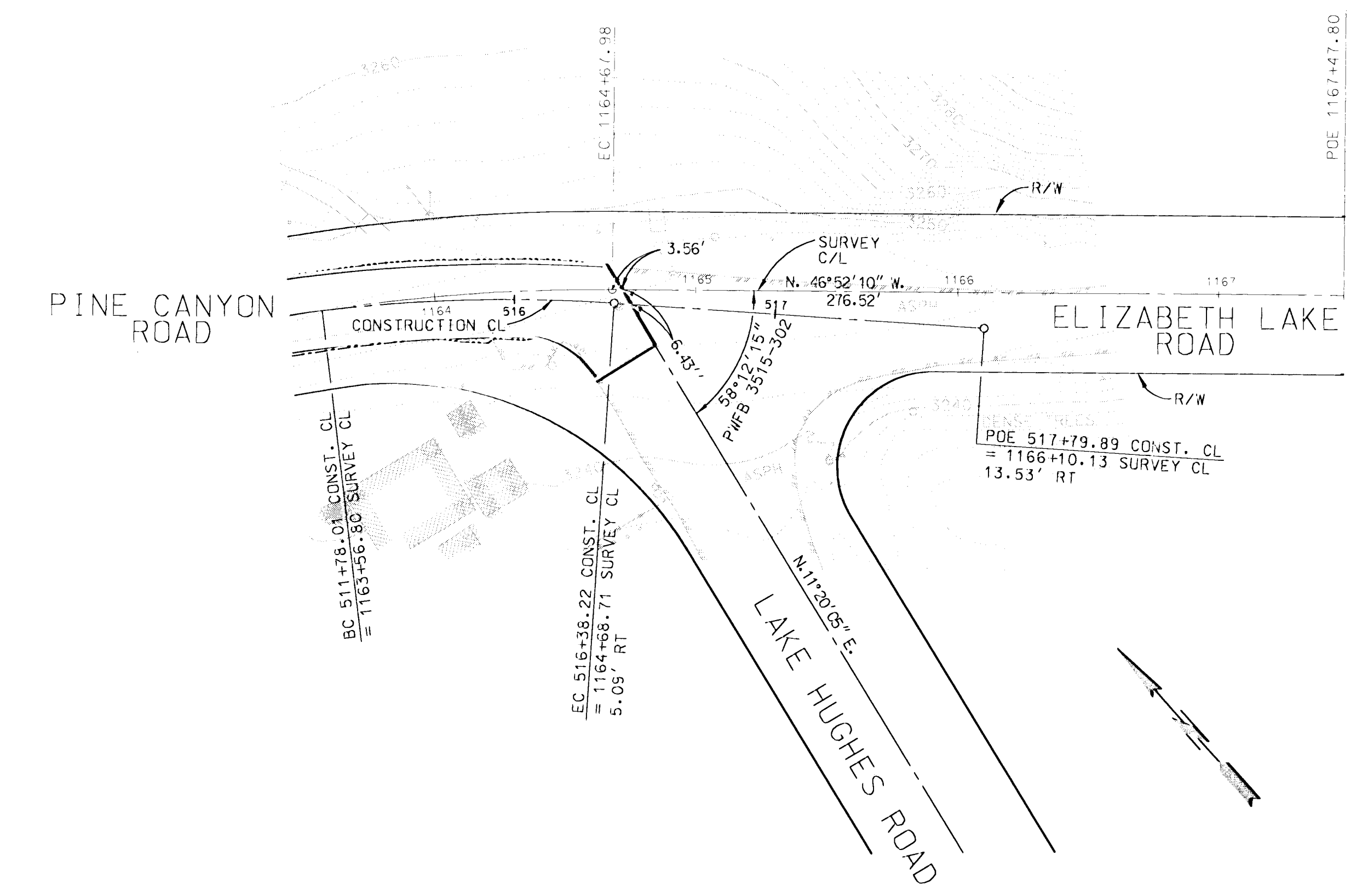
REVIEWED BY:
Manuel Orellana 7-21-03
 MANUEL ORELLANA DATE
 CONSULTANT DESIGN SECTION



(N) INT. PINE CANYON RD. & KINGS CANYON RD. (PRIVATE)
 N.T.S.



(R) INT. PINE CANYON RD. & THREE POINTS RD.
 N.T.S.



(S) INT. PINE CANYON RD. & LAKE HUGHES RD.
 N.T.S.

CAD PROJECT FILE NAME: RDC0014131_HYD_SHEET05.DGN
 CHECKER: JKR
 DESIGNER: CXCO/JGRH
 DRAFTER: AAP/AMST

DAVID EVANS AND ASSOCIATES INC.
 800 North Haven Avenue, Suite 300
 Ontario California 91764
 Phone: 909.481.5750

TWO DAYS BEFORE YOU DIG
 CALL USA TOLL FREE
 1-800-227-2600

DATE	MK	DESCRIPTION

REGISTERED PROFESSIONAL ENGINEER
 JEFFREY K. RUPP
 No. 42858
 Exp. 3/31/2004
 CIVIL
 STATE OF CALIFORNIA

Jeffrey K. Rupp 7/10/03
 ENGINEER

COUNTY OF LOS ANGELES DEPARTMENT OF PUBLIC WORKS

PINE CANYON ROAD
 "THREE POINTS ROAD TO LAKE HUGHES ROAD"
 TYPICAL SECTIONS & DETAILS
 PROJECT ID NO. RDC0014131

PCA X2509653 DWG SHEET 5 OF 53

