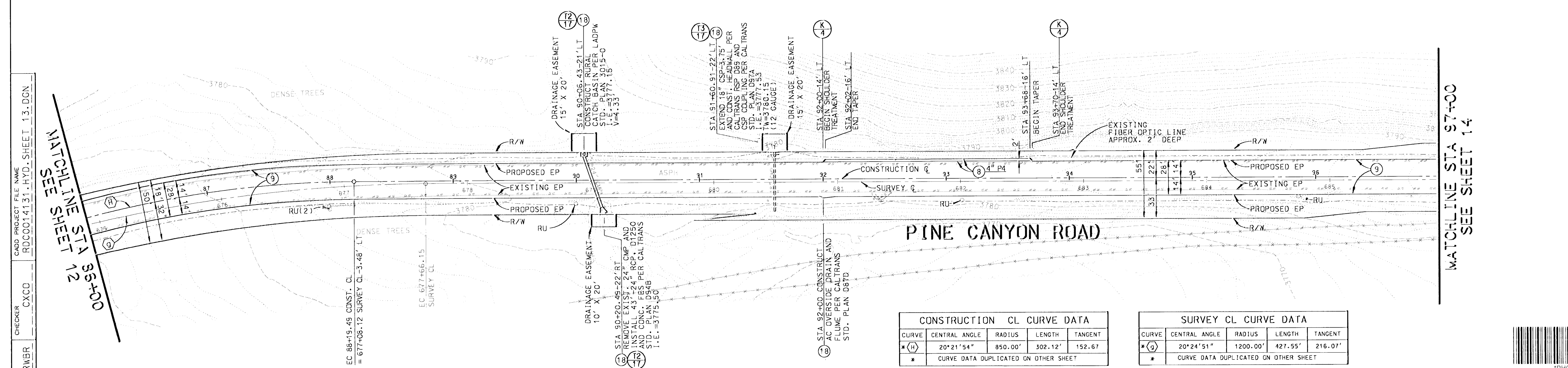
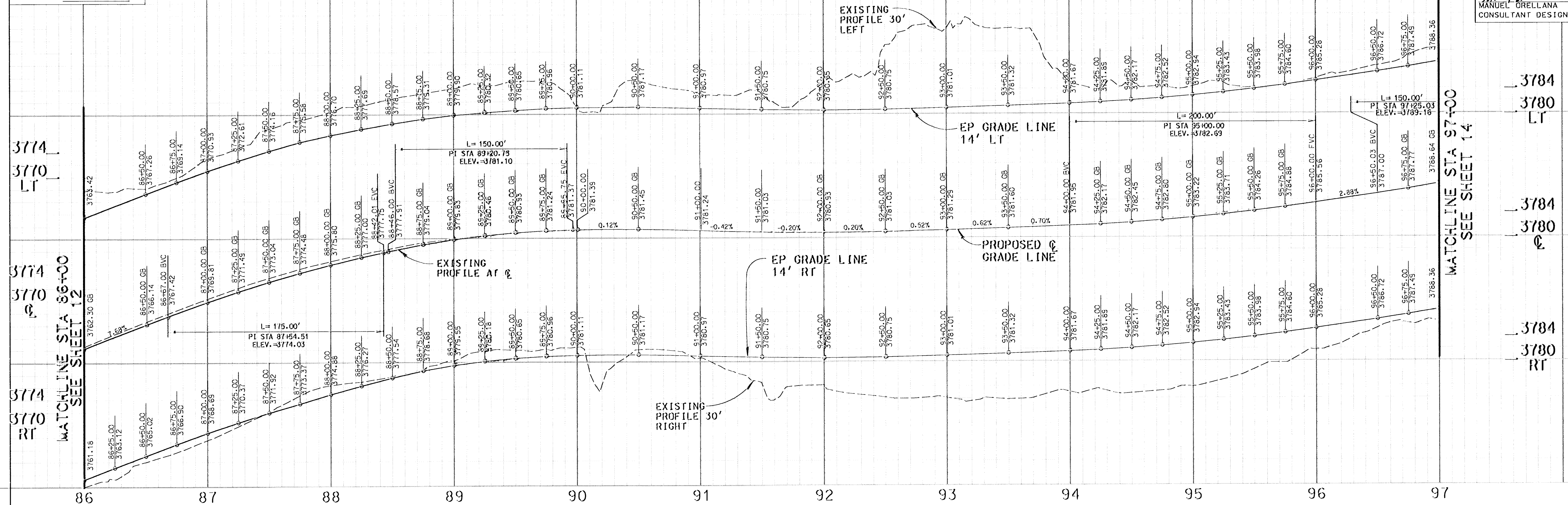


SCALE: HOR. 1"=40'
VERT. 1"=8'

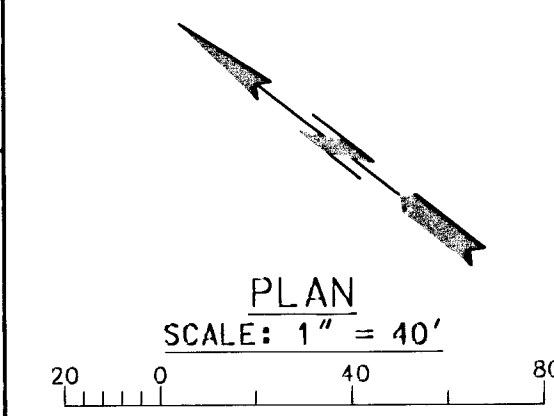
REVIEWED BY:
Manuel Orellana
MANUEL ORELLANA DATE 7-21-03
CONSULTANT DESIGN SECTION



CADD PROJECT FILE NAME: RDC0014131.HYD.SHEET.13.DGN
CHECKER: CXCO
DESIGNER: JGR/RWRB
DRAFTER: AAP

MATCHLINE STA 86+00
SEE SHEET 12

MATCHLINE STA 97+00
SEE SHEET 14



BENCH MARK NO. 111-53 P.W.B. 3711 0001
CSBM MGN 22FT S/O C/L PINE CYN RD & 1.45MI SE/O THREE POINTS RD 50FT SEL/Y/O GUY POLE #07123585
MGR POST 2FT N/O MGN MKD (111-53 1360 5863)
ELEV.=3777.353

BENCH MARK NO. 12 P.W.B. 3711 0001
SPK IN N SIDE PP (IND#) 1FT UP 18FT S/O C/L PINE CYN RD & 1.6MI SE/O THREE POINTS RD
ELEV.=3786.212

LA CO DPW BENCH MARK LIST
LANCASTER WEST 1998 QUAD
NAVD '88 DATUM

DAVID EVANS AND ASSOCIATES INC.
800 North Haven Avenue, Suite 300
Ontario California 91764
Phone: 909.481.5750

TWO DAYS BEFORE YOU DIG
CALL USA TOLL FREE
1-800-227-2600

DATE	MK	DESCRIPTION

REGISTERED PROFESSIONAL ENGINEER
JEFFREY K. RUPP
No. 42868
Exp. 3/31/2004
CIVIL
STATE OF CALIFORNIA
7/10/03

COUNTY OF LOS ANGELES DEPARTMENT OF PUBLIC WORKS
PINE CANYON ROAD
"THREE POINTS ROAD TO LAKE HUGHES ROAD"
PROJECT ID NO. RDC0014131
PCA X2509653 DWG SHEET 13 OF 53

