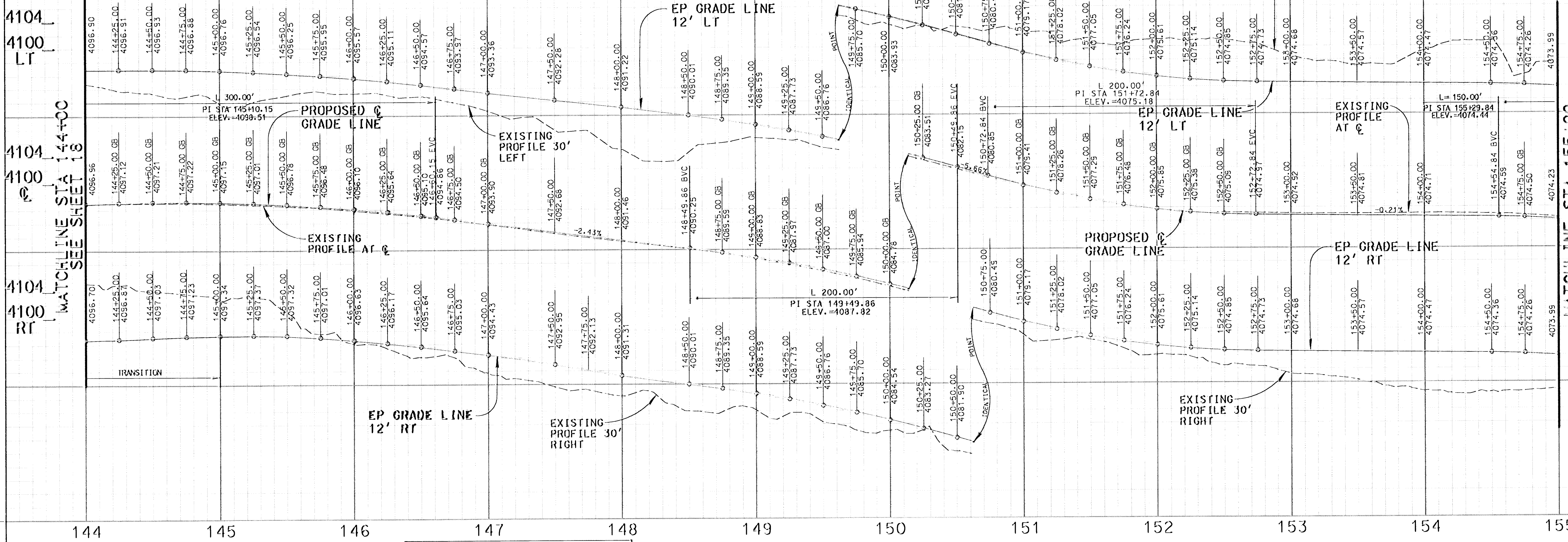


SCALE: HOR. 1"=40'
VERT. 1"=8'

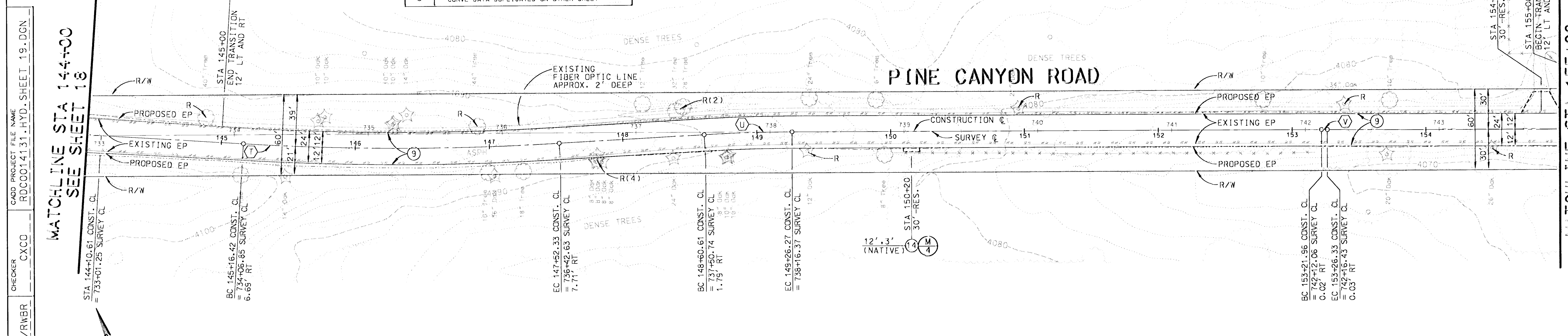


REVIEWED BY:
Manuel Orellana
MANUEL ORELLANA DATE 7-21-03
CONSULTANT DESIGN SECTION

4074
4070
LT
4074
4070
C
4074
4070
RT

CURVE	CENTRAL ANGLE	RADIUS	LENGTH	TANGENT
(1)	6°45'31"	2000.00'	235.92'	118.10'
(2)	3°08'06"	1200.00'	65.66'	32.84'
(3)	0°12'02"	1250.00'	4.37'	2.19'

* CURVE DATA DUPLICATED ON OTHER SHEET



CADD PROJECT FILE NAME: RDC0014131_HYD_SHEET_19.DGN
CHECKER: CXCC
DESIGNER: JCR/RWB
DRAFTER: AAP

WATCHLINE STA 144+00
SEE SHEET 18

WATCHLINE STA 155+00
SEE SHEET 20

BENCH MARK NO. 20 P.M.B. 3711 0003
TIN IP FL 311 N/O C/L PINE CYN RD 2.72MI SE/O THREE POINTS RD 80FT W/O C/L CHAIN LINK GATE S SIDE ST
ELEV.=5514.582

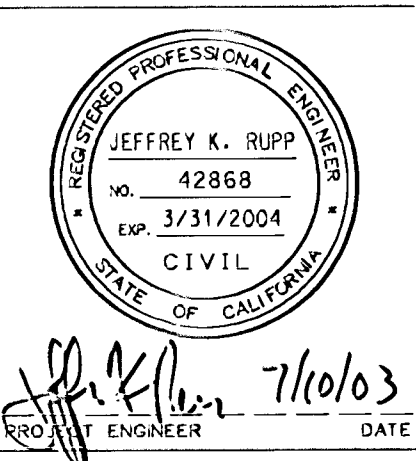
BENCH MARK NO. 21 P.M.B. 3711 0003
TIN IP FL 21.5FT D C/L PINE CYN RD 80FT W/O C/L DIRT RD TO HSE #24325 2.82MI SE/O THREE POINTS RD
ELEV.=4071.325

LA CD DPW BENCH MARK LIST
LANCASTER WEST 1938 QUAD
NAVD '88 DATUM

DAVID EVANS AND ASSOCIATES INC.
800 North Haven Avenue, Suite 300
Ontario California 91784
Phone: 909.481.5750

TWO DAYS BEFORE YOU DIG
CALL USA TOLL FREE
1-800-227-2600

DATE	MK	DESCRIPTION



COUNTY OF LOS ANGELES DEPARTMENT OF PUBLIC WORKS

PINE CANYON ROAD
"THREE POINTS ROAD TO LAKE HUGHES ROAD"

PROJECT ID NO. RDC0014131

PCA X250965J DWG SHEET 19 OF 53

