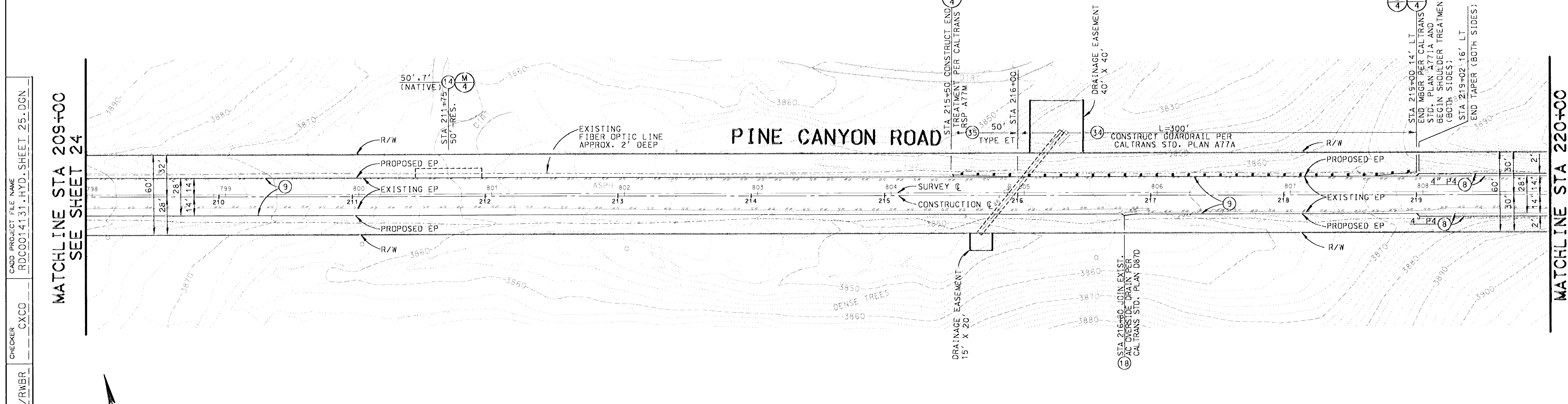


REVIEWED BY:  
*Manuel Orellana*  
 MANUEL ORELLANA 7-24-03  
 DATE  
 CONSULTANT DESIGN SECTION

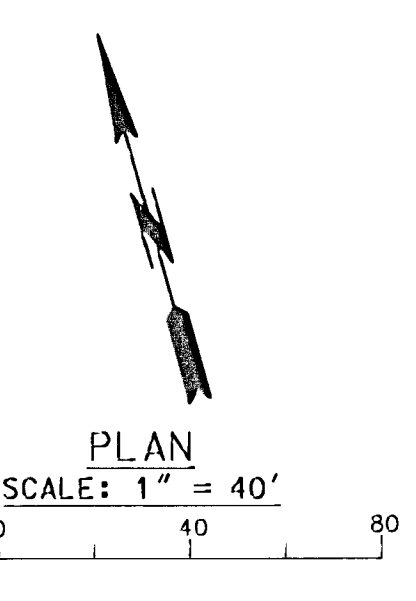
3880 LT  
 3876  
 3884  
 3880  
 3884  
 3880 RT



MATCHLINE STA 209+00  
 SEE SHEET 24

MATCHLINE STA 220+00  
 SEE SHEET 26

DESIGNER: JGR/RWB  
 CHECKER: CXCC  
 DRAFTER: AAP  
 CADD PROJECT FILE NAME: RDC0014131-HYD-SHEET 25.DGN



BENCH MARK NO. 32 P.W.B. 3112 0002  
 1.11 IN 3P FL 16FT N/O C/L PINE CYN RD & 4.04MI SE/O  
 THREE POINTS RD 3FT E/O MI MKR 5.15  
 ELEV.=3855.025  
 LA CO DPM BENCH MARK LIST  
 LANCASTER WEST 1998 QUAD  
 NAVD '88 DATUM

**DAVID EVANS AND ASSOCIATES INC.**  
 800 North Haven Avenue, Suite 300  
 Ontario California 91764  
 Phone: 909.481.5750

TWO DAYS BEFORE YOU DIG  
 CALL USA TOLL FREE  
 1-800-227-2600

DATE	MK	DESCRIPTION

REGISTERED PROFESSIONAL ENGINEER  
 JEFFREY K. RUPP  
 No. 42868  
 Exp. 3/31/2004  
 CIVIL  
 STATE OF CALIFORNIA  
 PROJECT ENGINEER DATE 7/10/03

COUNTY OF LOS ANGELES DEPARTMENT OF PUBLIC WORKS  
**PINE CANYON ROAD**  
 "THREE POINTS ROAD TO LAKE HUGHES ROAD"  
 PROJECT ID NO. RDC0014131  
 PCA X2509653 DWG SHEET 25 OF 53

