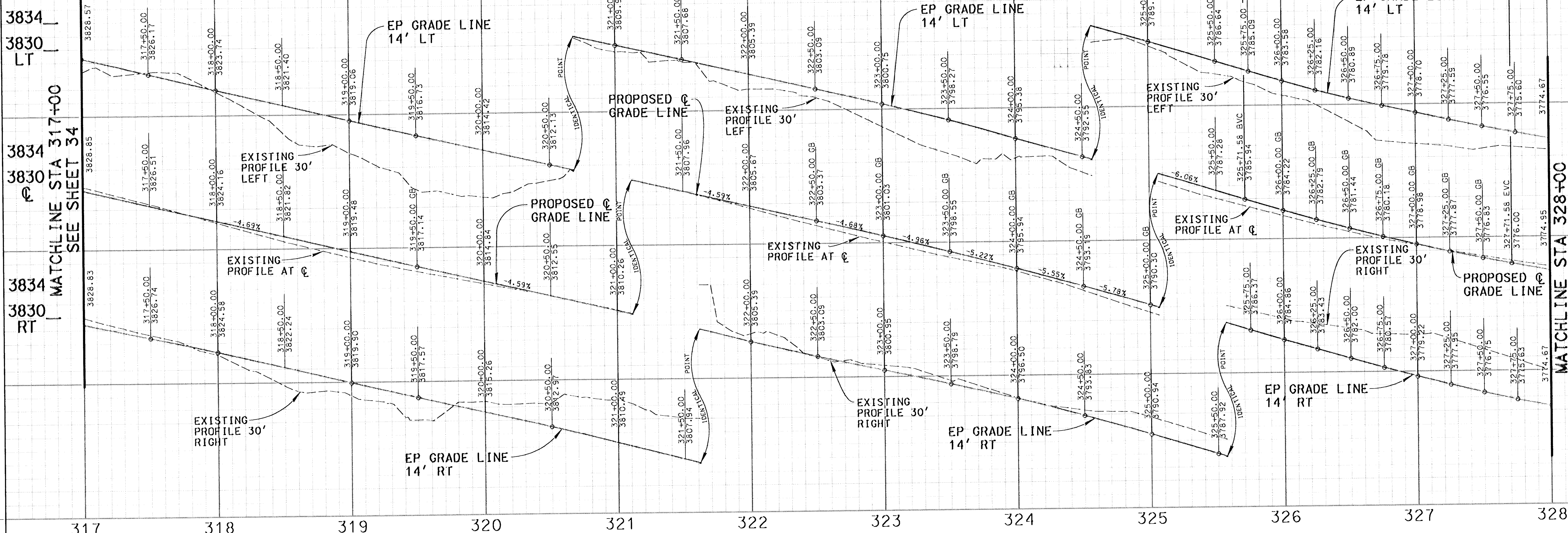
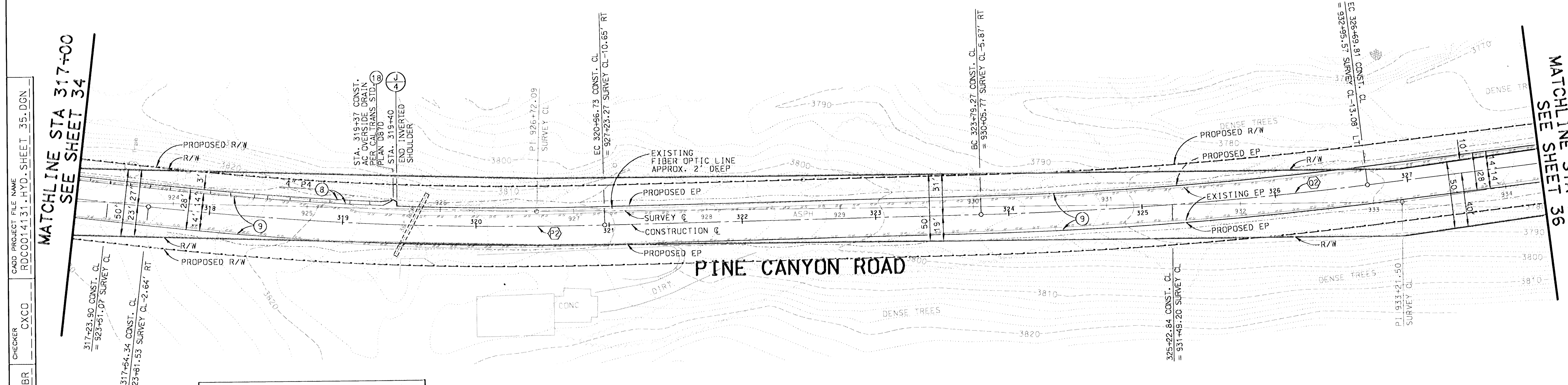


SCALE: HOR. 1"=40'
VERT. 1"=8'

REVIEWED BY:
MANUEL ORELLANA DATE 7-29-03
CONSULTANT DESIGN SECTION



3784
3780
LT
3784
3780
CL
3784
3780
RT



CONSTRUCTION CL CURVE DATA

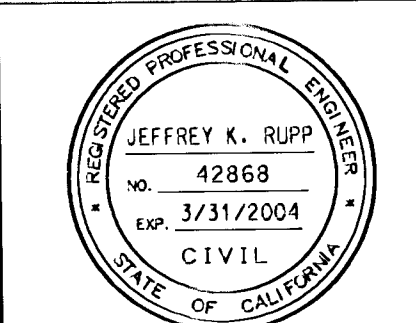
CURVE	CENTRAL ANGLE	RADIUS	LENGTH	TANGENT
(P2)	7°50'49"	2500.00'	342.40'	171.46'
(P3)	5°32'56"	3000.00'	290.54'	145.38'

* CURVE DATA DUPLICATED ON OTHER SHEET

BENCH MARK NO. 111-45 P.W.B. 3613 0002
BOAT SPX IN CONC STEP TO OLD FOUNDATION OF
ABANDON GUARD STATION 43.5FT S/D C/L PINE CYN
RD & 6.07MI SE/D THREE POINTS RD @ MI MKR 3-74
ELEV. = 3821.160
LA CD DPW BENCH MARK LIST
LANCASTER WEST 1998 QUAD
NAVD '88 DATUM

DAVID EVANS AND ASSOCIATES INC.
800 North Haven Avenue, Suite 300
Ontario California 91784
Phone: 909.481.5750

TWO DAYS BEFORE YOU DIG
CALL USA TOLL FREE
1-800-227-2600



COUNTY OF LOS ANGELES DEPARTMENT OF PUBLIC WORKS
PINE CANYON ROAD
"THREE POINTS ROAD TO LAKE HUGHES ROAD"
PROJECT ID NO. RDC0014131
PCA X2509653 DWG SHEET 35 OF 53

CADD PROJECT FILE NAME: RDC0014131.HYD.SHEET_35.DGN
CHECKER: CXCC
DESIGNER: JGR/RWB
DRAFTER: AAP

MATCHLINE STA 317+00
SEE SHEET 34

MATCHLINE STA 328+00
SEE SHEET 36

