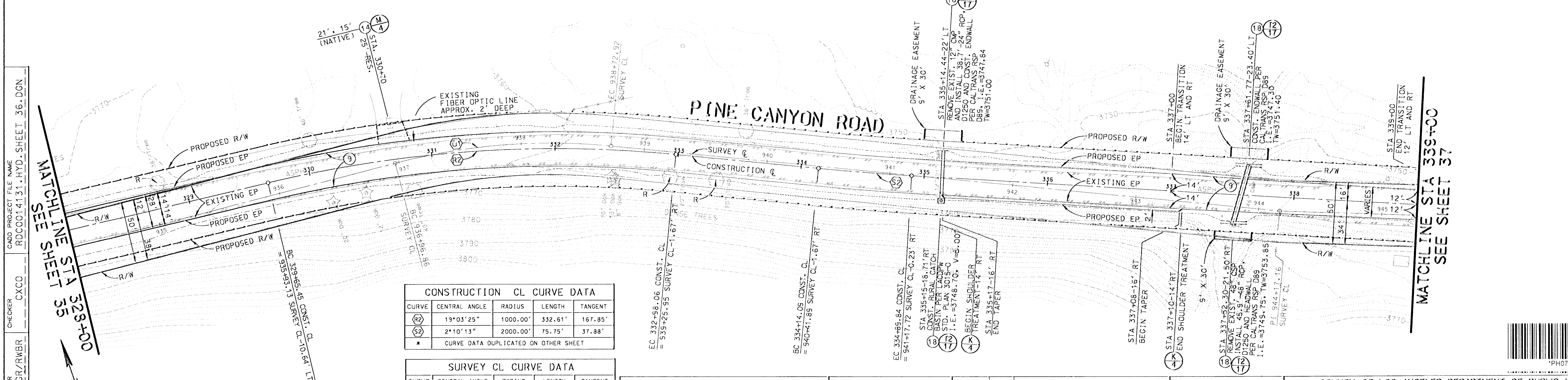
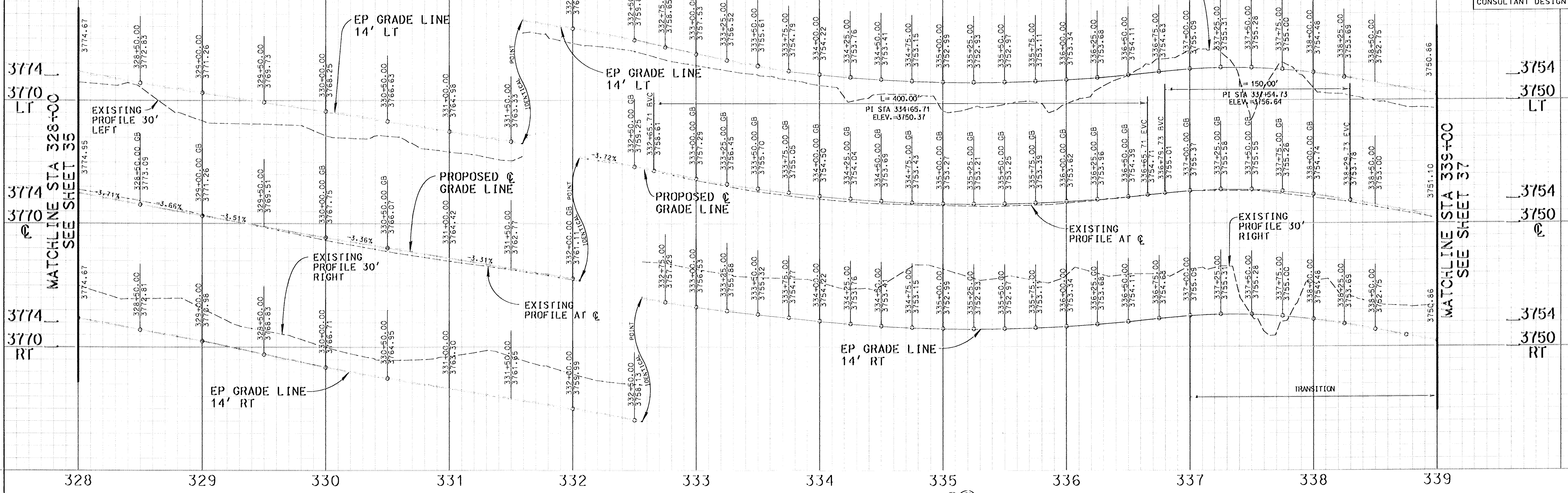


REVIEWED BY:
Manuel Orellana
 MANUEL ORELLANA DATE 7-29-03
 CONSULTANT DESIGN SECTION

SCALE: HOR. 1"=40'
 VERT. 1"=8'



CONSTRUCTION CL CURVE DATA				
CURVE	CENTRAL ANGLE	RADIUS	LENGTH	TANGENT
(R2)	19°03'25"	1000.00'	332.61'	167.85'
(S2)	2°10'13"	2000.00'	75.75'	37.88'

* CURVE DATA DUPLICATED ON OTHER SHEET

SURVEY CL CURVE DATA				
CURVE	CENTRAL ANGLE	RADIUS	LENGTH	TANGENT
(U)	20°10'33"	500.00'	176.07'	88.96'

* CURVE DATA DUPLICATED ON OTHER SHEET

BENCH MARK NO. 49 PWB 3613 0003
 CH15 SQ IN CTR CONC HDWL 21.6FT S/D C/L PINE CYN RD & 6.44MI SE/O THREE POINTS RD 9FT E/O MI MKR #3.40
 ELEV. = 3755.077
 LA CD DP# BENCH MARK LIST
 LANCASTER WEST 1998 QUAD
 NAVD '88 DATUM

DAVID EVANS AND ASSOCIATES INC.
 800 North Haven Avenue, Suite 300
 Ontario California 91764
 Phone: 909.481.5750

TWO DAYS BEFORE YOU DIG
 CALL USA TOLL FREE
 1-800-227-2600

DATE	MK	DESCRIPTION

PROFESSIONAL ENGINEER
 JEFFREY K. RUPP
 No. 42868
 Exp. 3/31/2004
 CIVIL
 STATE OF CALIFORNIA

COUNTY OF LOS ANGELES DEPARTMENT OF PUBLIC WORKS
PINE CANYON ROAD
 "THREE POINTS ROAD TO LAKE HUGHES ROAD"
 PROJECT ID NO. RDC0014131
 SHEET 36 OF 53

CADD PROJECT FILE NAME: RDC0014131_HYD_SHEET 36.DGN
 CHECKER: CXCO
 DESIGNER: JCR/RWB
 DRAFTER: AAP

MATCHLINE STA 328+00
 SEE SHEET 35

MATCHLINE STA 339+00
 SEE SHEET 37

