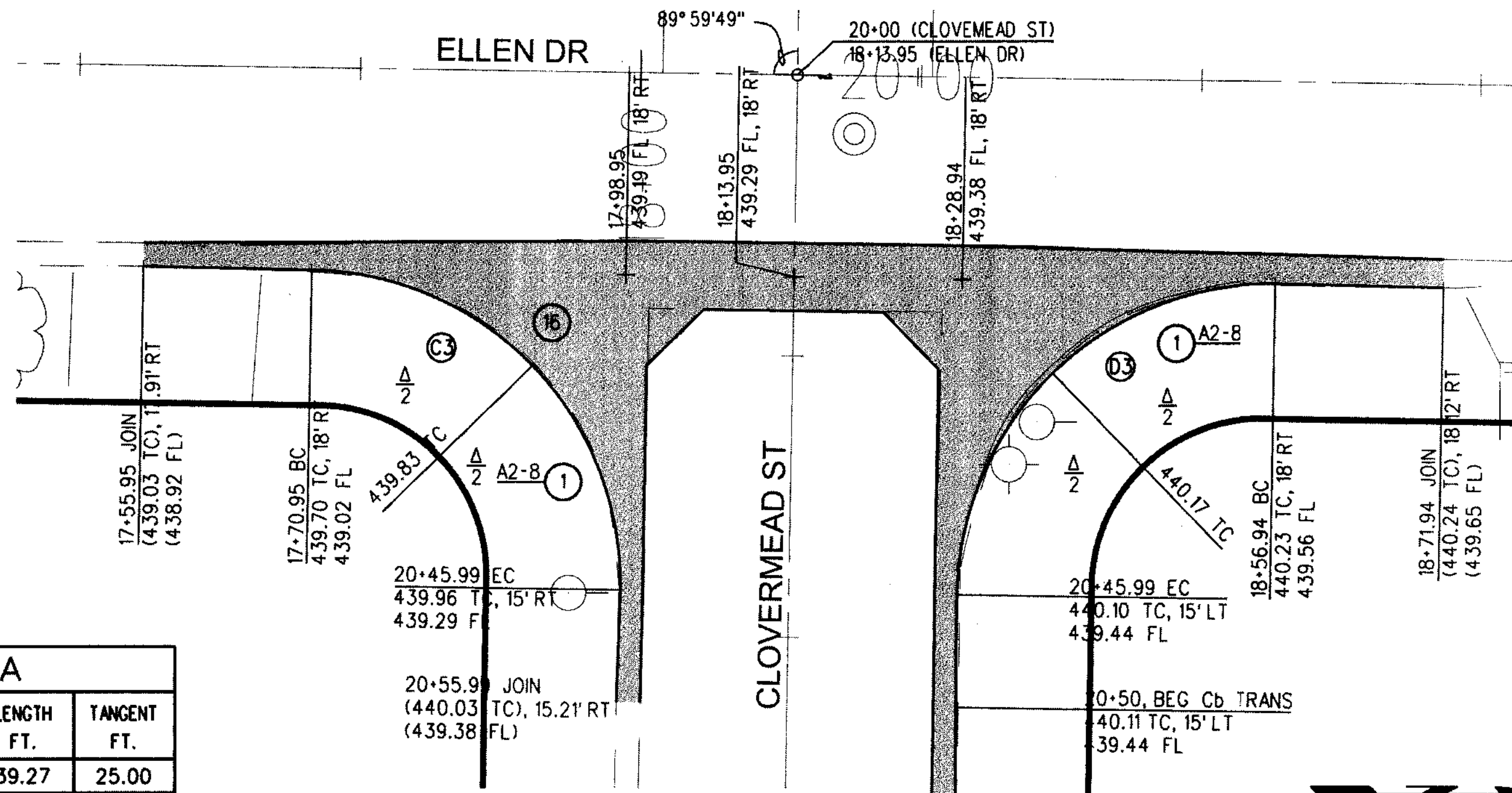
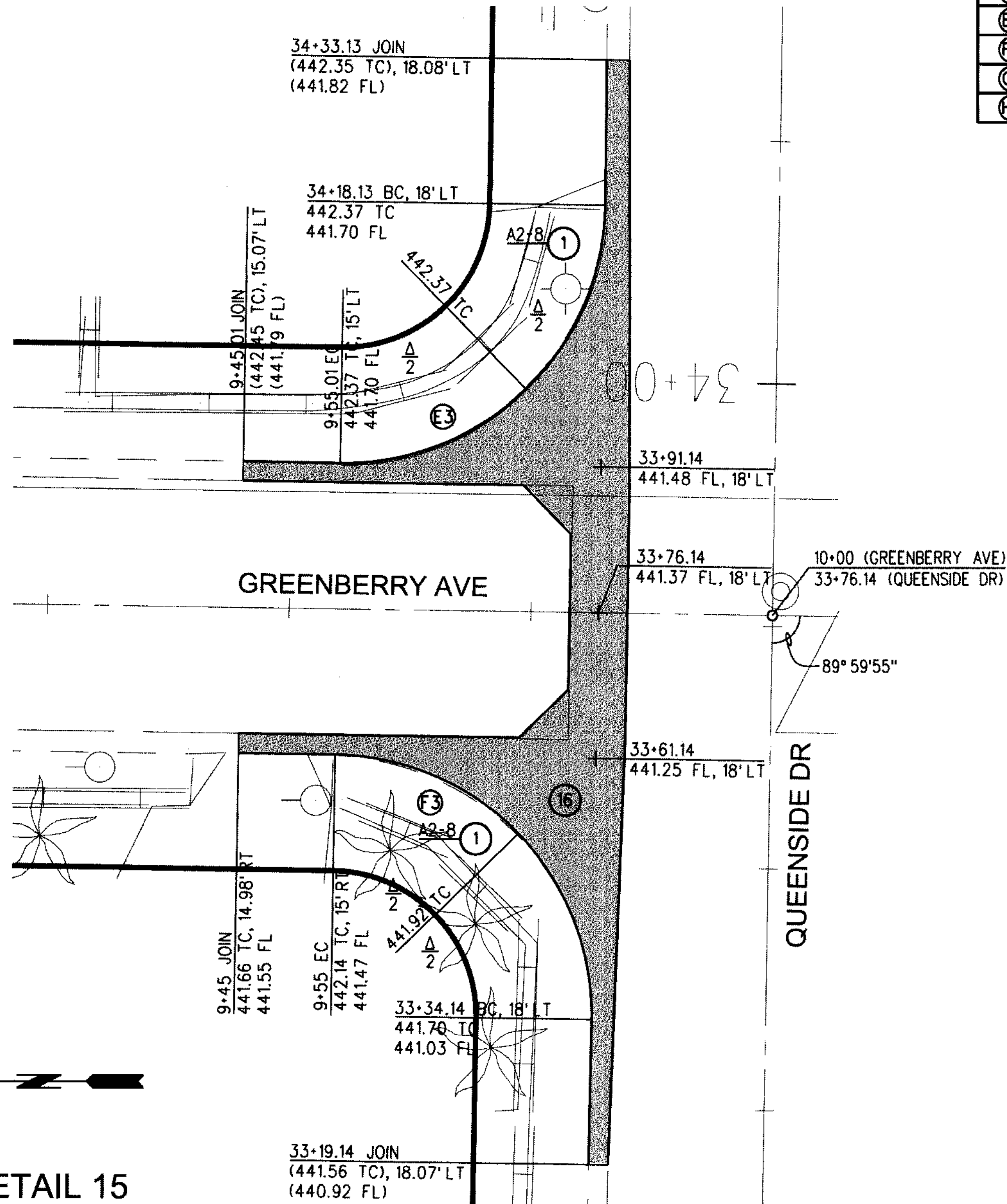


**DETAIL 13**  
SCALE: 1" = 10'

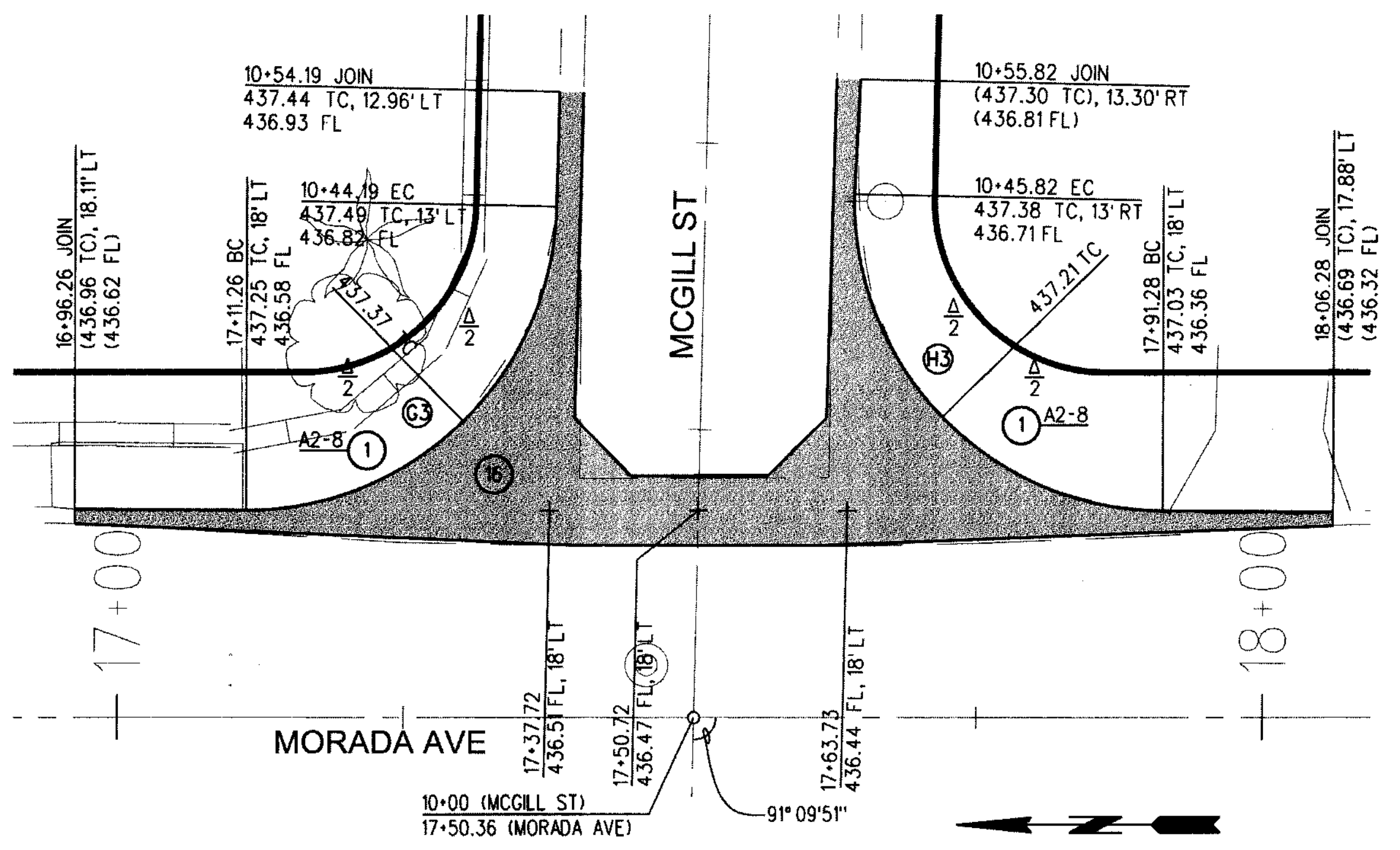


**DETAIL 14**  
SCALE: 1" = 10'

CURVE	RADIUS FT.	CENTRAL ANGLE			LENGTH FT.	TANGENT FT.
		DEG.	MIN.	SEC.		
(A)3	25	90	00	23	39.27	25.00
(B)3	25	90	00	29	39.27	25.00
(C)3	28	89	59	34	43.98	28.00
(D)3	28	89	59	15	43.98	27.99
(E)3	27	89	59	09	42.40	26.99
(F)3	27	89	59	55	42.41	27.00
(G)3	27	88	50	09	41.86	26.46
(H)3	27	91	09	51	42.96	27.55



**DETAIL 15**  
SCALE: 1" = 10'



**DETAIL 16**  
SCALE: 1" = 10'

DATE: 11/13/13  
 REVIEWED BY: [Signature]  
 CASE PROJECT FILE NAME: RDC0015528\_BALLENTINE\_PL\_DES  
 CHECKER: ROY CRUZ  
 DESIGNER: THOMAS HO  
 PROJECT: THOMAS HO



DATE	MK	DESCRIPTION

REGISTERED PROFESSIONAL ENGINEER  
 THOMAS A. HO  
 No. C60649  
 CIVIL  
 STATE OF CALIFORNIA  
 PROJECT ENGINEER: [Signature] DATE: 11/13/13

COUNTY OF LOS ANGELES DEPARTMENT OF PUBLIC WORKS  
**BALLENTINE PL, ET AL**  
 CROSS GUTTERS  
 PROJECT ID NO. RDC0015528  
 PCA X910000459 DWG PH082650 SHEET 43 OF 43