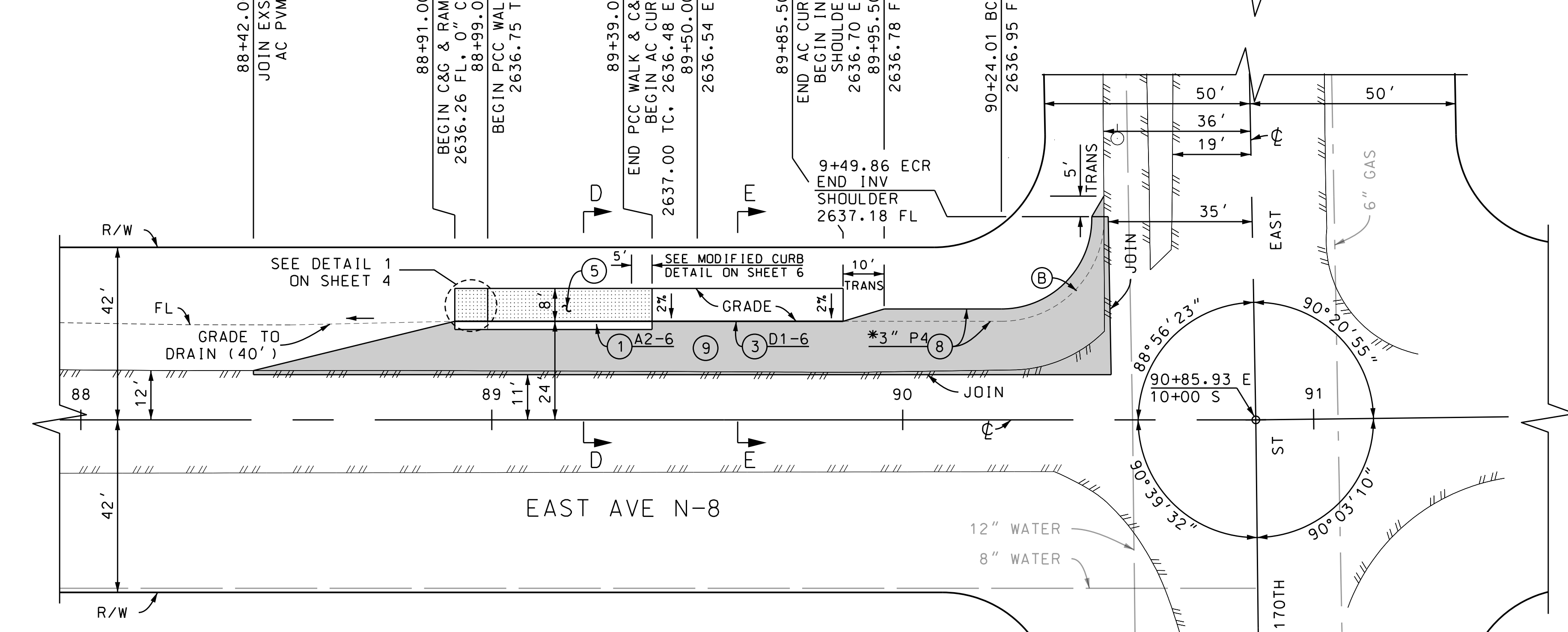
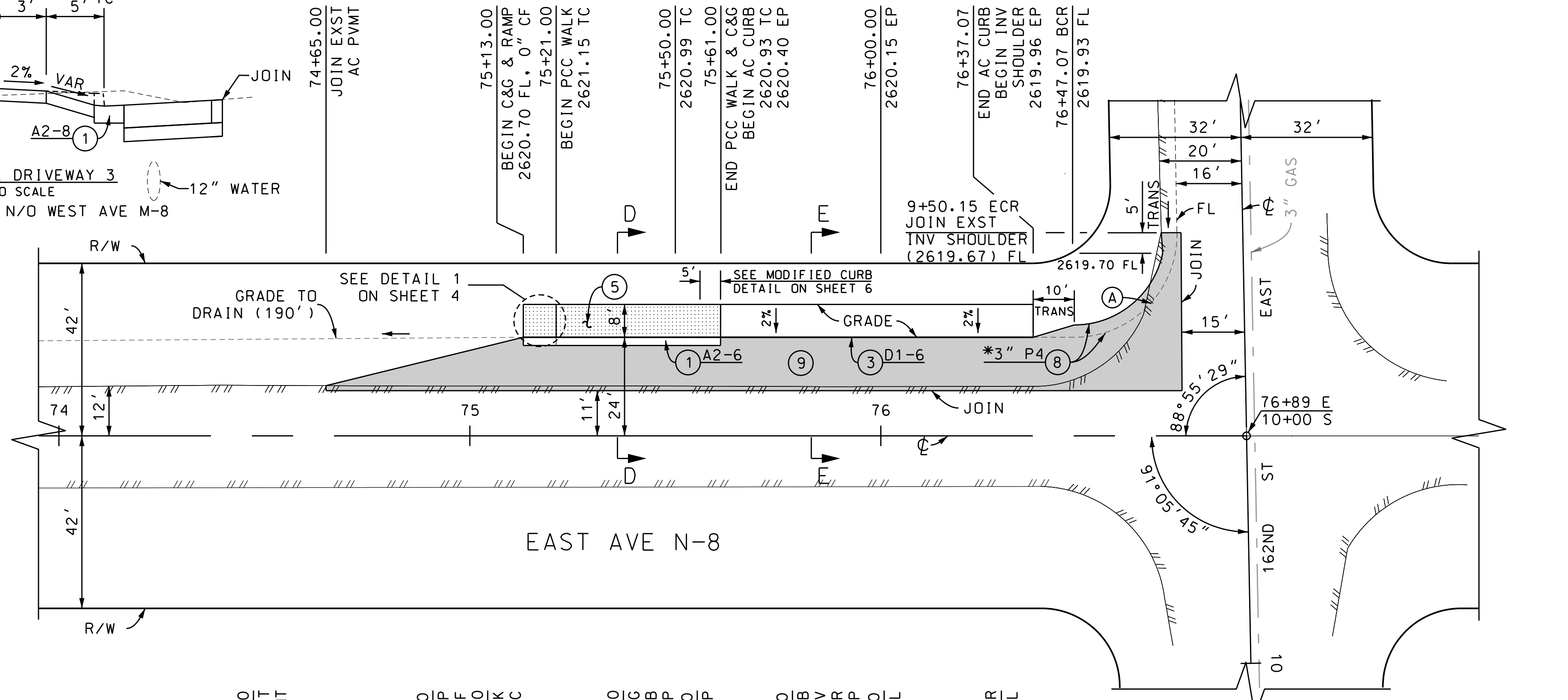
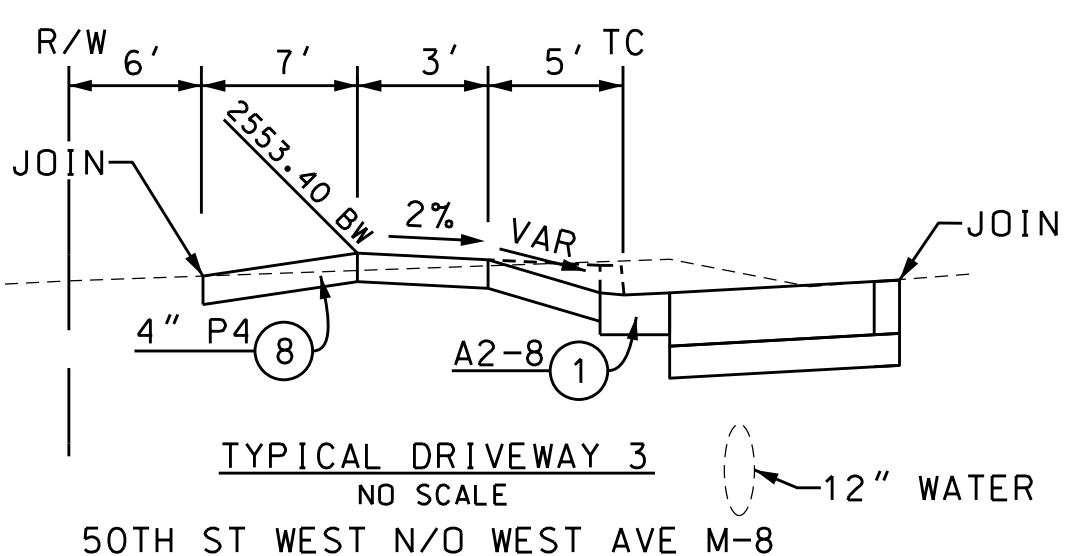
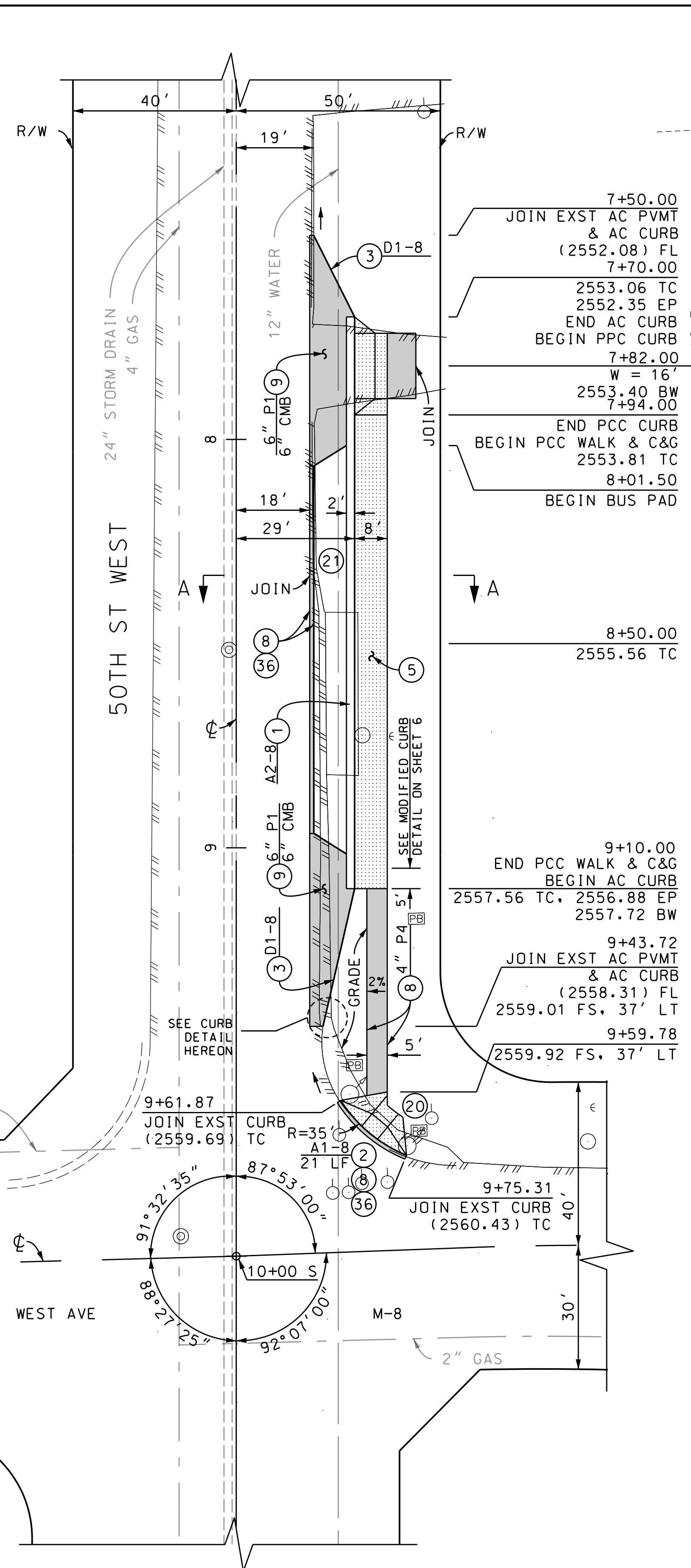


9+40.72  
2558.79 TC  
9+41.72  
2558.17 FL, 0" CF  
9+42.72  
2558.22 FL, 0" CF  
9+43.72  
(2558.94) TC  
JOIN EXST CURB

CURB DETAIL  
NO SCALE



PLAN  
SCALE: 1" = 20'

BENCHMARK PT# 10000  
PWFB 3422, PAGE 1599  
FD CO. ENG MON IN WELL @ INT 50TH W & AVE M-8 PER PWFB 3422-1536  
ELEV= 2559.76 NAVD'88 (PALMDALE 2010)

BENCHMARK PT# 4000  
PWFB 3333, PAGE 336  
@ INT 170TH ST E & AVE N-8  
2" IP & CUT SPK IN WELL DN 24"  
ELEV= 2636.74 NAVD'88 (LLAND 2012)

BENCHMARK PT# 3000  
PWFB 3333, PAGE 334  
@ INT AVE N-8 & 162ND ST EAST  
CO ENG WELL MON DN 18"  
ELEV= 2619.14 NAVD'88 (LLAND 2012)

SEE SECTION A-A ON SHEET 4  
SEE SECTION D-D ON SHEET 6  
SEE SECTION E-E ON SHEET 6

\* SEE TYPICAL AC INVERTED SHOULDER SECTION ON SHEET 6

CURVE	RADIUS (FT)	CENTRAL ANGLE			LENGTH (FT)	TANGENT (FT)	ELEVATIONS (FL)		
		DEG	MIN	SEC			E'LYΔ/4	Δ/2	W'LYΔ/4
(A)	25.00	91	04	31	39.74	25.47	2619.86	2619.78	2619.71
(B)	25.00	91	03	37	39.73	25.47	2637.01	2637.06	2637.12

DATE	BY	DESCRIPTION



PROJECT ENGINEER: Manuel Orellana  
DATE: 8-10-16

COUNTY OF LOS ANGELES DEPARTMENT OF PUBLIC WORKS

### NORTH COUNTY BUS STOP IMPROVEMENTS PLAN

PROJECT ID NO. TRN0000019

PCA DWG SHEET 7 OF 7

PH085718