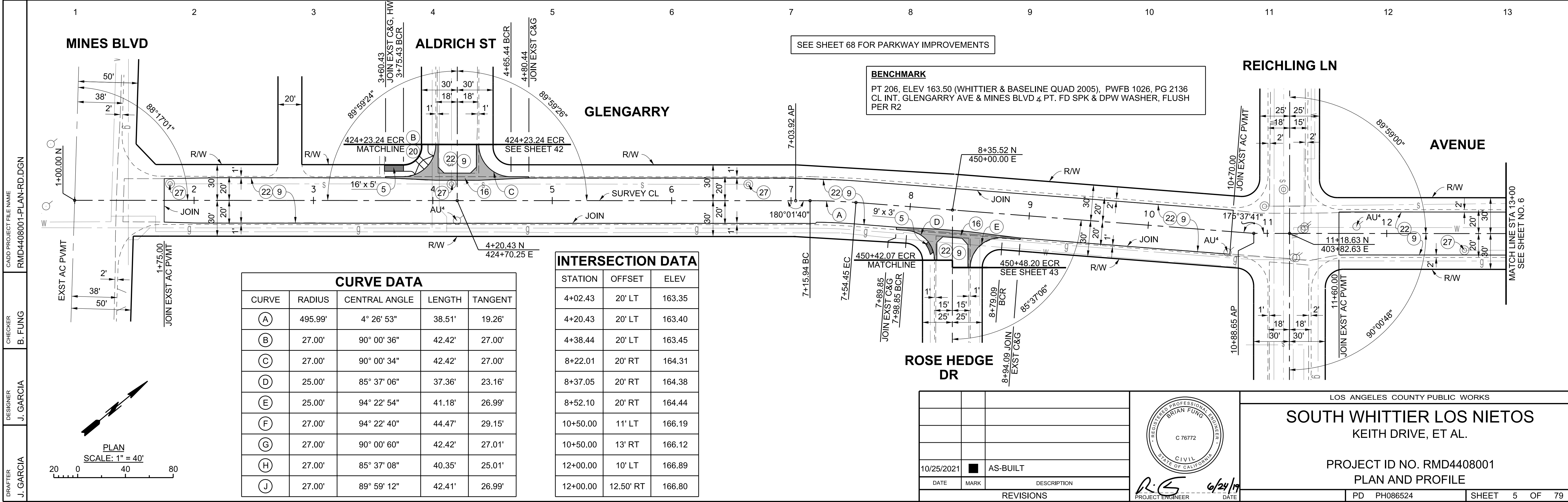
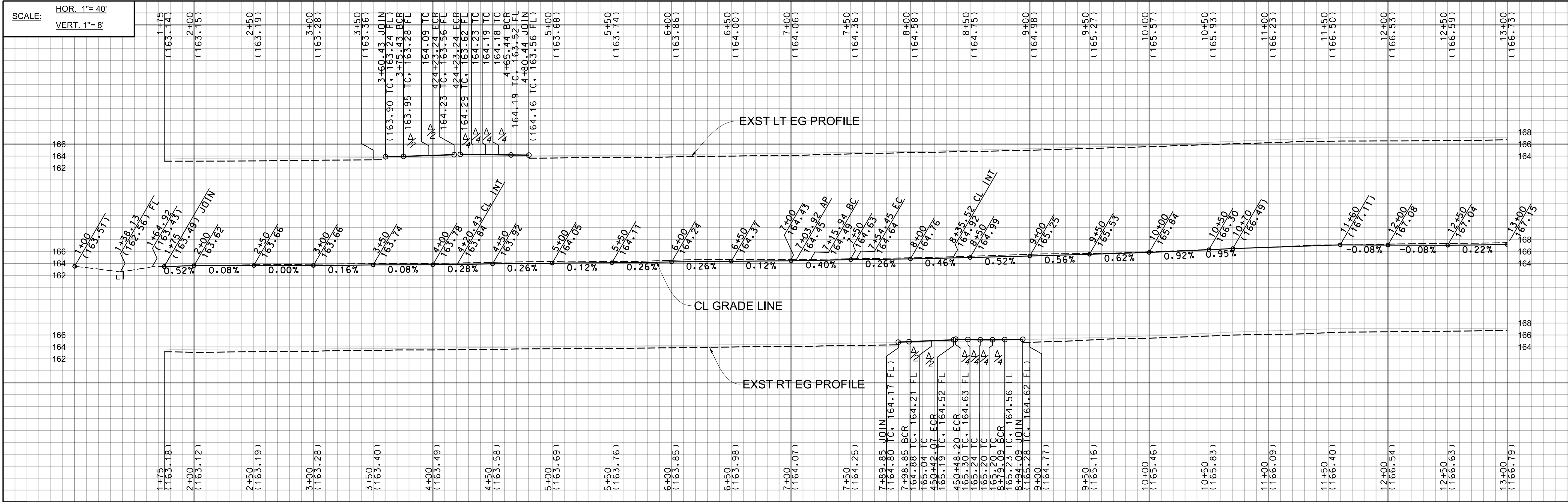


SCALE: HOR. 1"= 40'
VERT. 1"= 8'



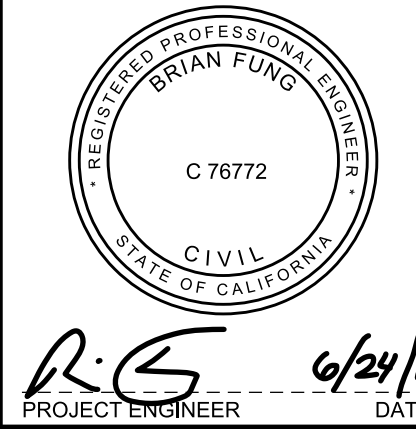
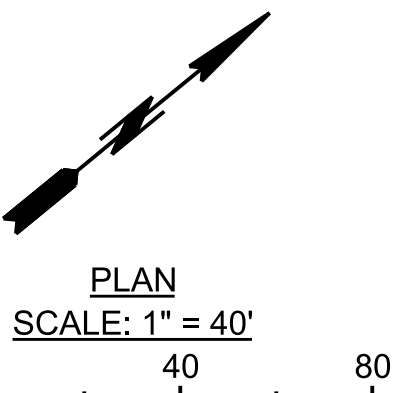
SEE SHEET 68 FOR PARKWAY IMPROVEMENTS

BENCHMARK
PT 206, ELEV 163.50 (WHITTIER & BASELINE QUAD 2005), PWFB 1026, PG 2136
CL INT. GLENGARRY AVE & MINES BLVD, 4 PT. FD SPK & DPW WASHER, FLUSH
PER R2

CURVE DATA				
CURVE	RADIUS	CENTRAL ANGLE	LENGTH	TANGENT
(A)	495.99'	4° 26' 53"	38.51'	19.26'
(B)	27.00'	90° 00' 36"	42.42'	27.00'
(C)	27.00'	90° 00' 34"	42.42'	27.00'
(D)	25.00'	85° 37' 06"	37.36'	23.16'
(E)	25.00'	94° 22' 54"	41.18'	26.99'
(F)	27.00'	94° 22' 40"	44.47'	29.15'
(G)	27.00'	90° 00' 60"	42.42'	27.01'
(H)	27.00'	85° 37' 08"	40.35'	25.01'
(J)	27.00'	89° 59' 12"	42.41'	26.99'

INTERSECTION DATA		
STATION	OFFSET	ELEV
4+02.43	20' LT	163.35
4+20.43	20' LT	163.40
4+38.44	20' LT	163.45
8+22.01	20' RT	164.31
8+37.05	20' RT	164.38
8+52.10	20' RT	164.44
10+50.00	11' LT	166.19
10+50.00	13' RT	166.12
12+00.00	10' LT	166.89
12+00.00	12.50' RT	166.80

CADD PROJECT FILE NAME: RMD4408001-PLAN-RD.DGN
CHECKER: B. FUNG
DESIGNER: J. GARCIA
DRAFTER: J. GARCIA



LOS ANGELES COUNTY PUBLIC WORKS
SOUTH WHITTIER LOS NIETOS
KEITH DRIVE, ET AL.
PROJECT ID NO. RMD4408001
PLAN AND PROFILE
PD PH086524 SHEET 5 OF 79

DATE	MARK	DESCRIPTION
10/25/2021	AS-BUILT	
REVISIONS		