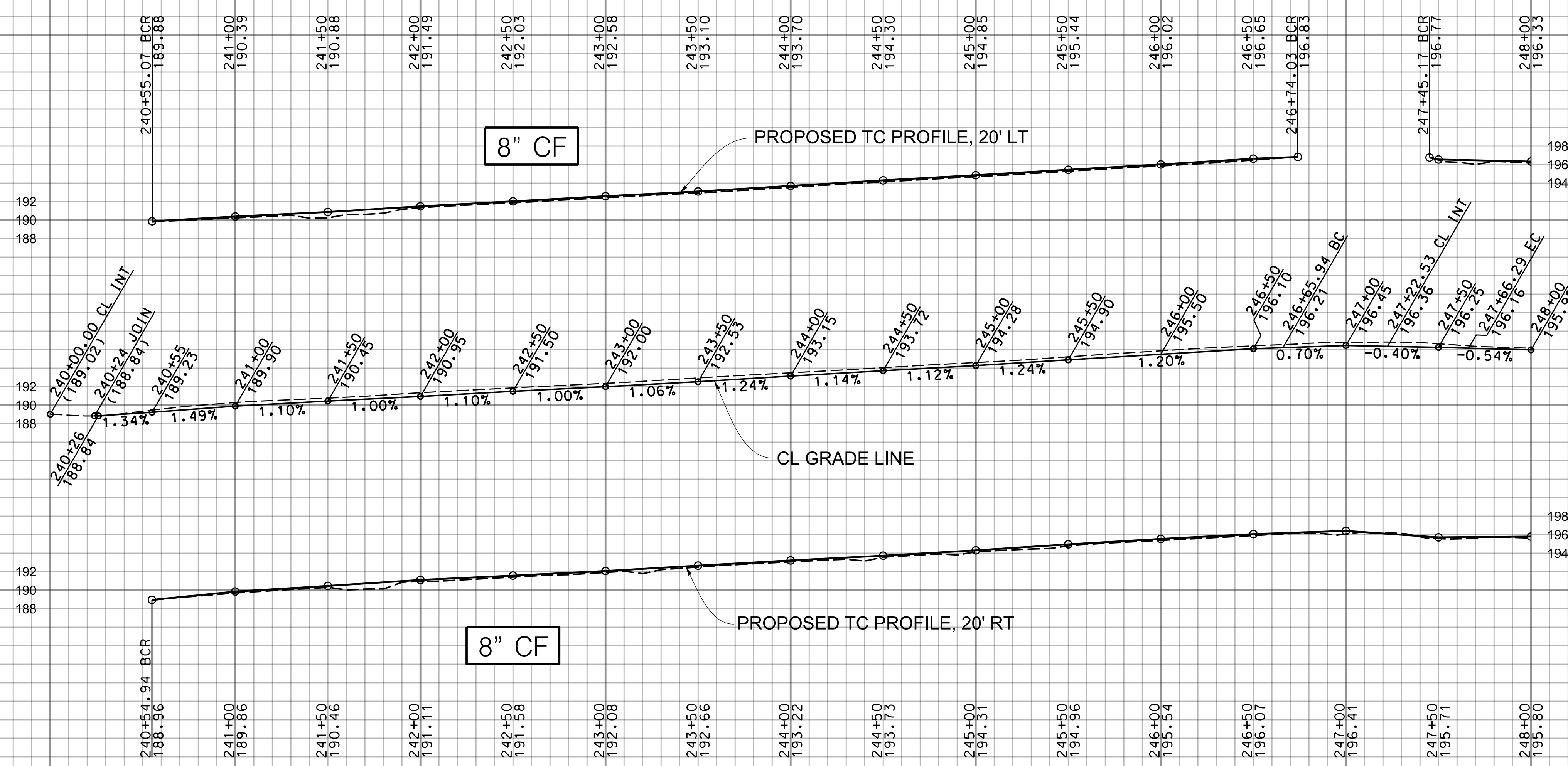
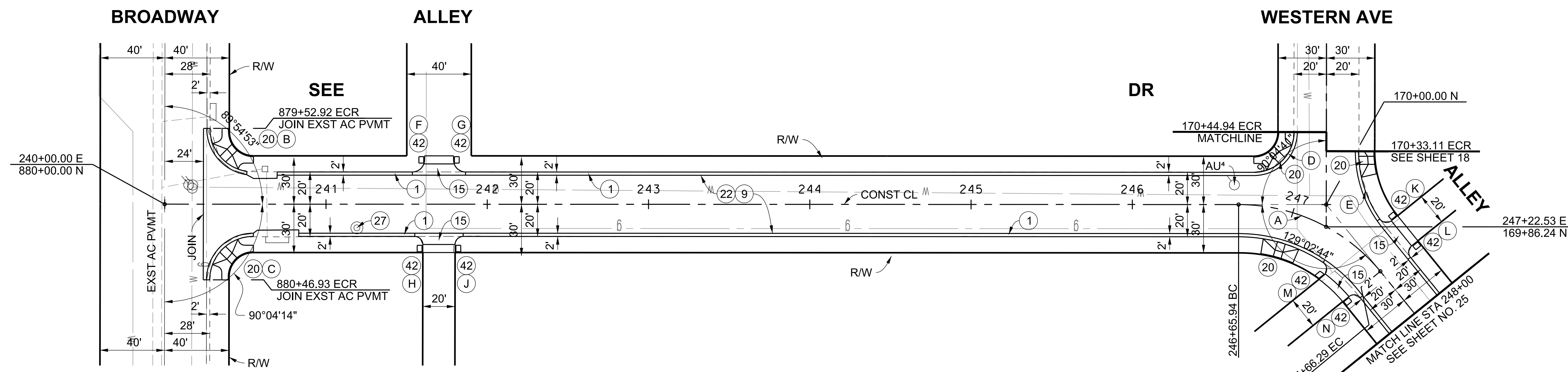


SCALE: HOR. 1"= 40'
VERT. 1"= 8'



240 241 242 243 244 245 246 247 248

SEE SHEET 70 FOR PARKWAY IMPROVEMENTS



CURVE DATA

CURVE	RADIUS	CENTRAL ANGLE	LENGTH	TANGENT
(A)	114.00'	50° 26' 15"	100.35'	53.69'
(B)	27.00'	91° 36' 17"	38.46'	23.31'
(C)	27.00'	89° 55' 46"	42.38'	26.97'
(D)	25.00'	93° 18' 15"	40.71'	26.48'
(E)	73.17'	39° 5' 50"	49.93'	25.98'
(F)	7.50'	89° 59' 35"	11.78'	7.50'
(G)	7.50'	90° 00' 00"	11.78'	7.50'
(H)	5.00'	90° 00' 25"	7.85'	5.00'
(J)	5.00'	90° 00' 00"	7.85'	5.00'
(K)	5.00'	94° 04' 07"	8.21'	5.37'
(L)	5.00'	89° 58' 25"	7.85'	5.00'
(M)	5.00'	107° 03' 55"	9.34'	6.77'
(N)	5.00'	90° 00' 00"	7.85'	5.00'

BENCHMARK
PT 642, ELEV 190.94 (WHITTIER & BASELINE QUAD 2005), PWFB 1027, PG 967
CL INT SEE DR & ALLEY E/O BROADWAY FD SPK & W, PER R1, FL

LOS ANGELES COUNTY PUBLIC WORKS

SOUTH WHITTIER LOS NIETOS
KEITH DRIVE, ET AL.

PROJECT ID NO. RMD4408001
PLAN AND PROFILE

ELEVATIONS

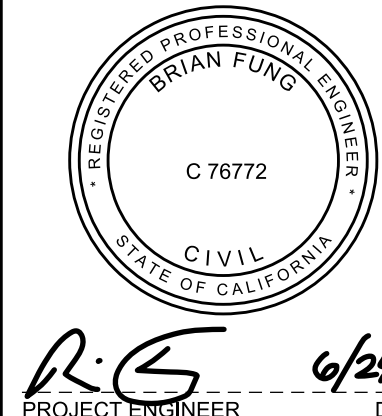
CURVE	BCR	Δ/2	ECR
(B)	189.88 TC 189.21 FL	190.06 TC 189.39 FL	190.28 TC 189.61 FL
(C)	188.96 TC 188.29 FL	188.56 TC 187.89 FL	187.70 TC 187.03 FL
(D)	196.83 TC 196.16 FL	197.71 TC 197.05 FL	198.48 TC 197.81 FL

INTERSECTION DATA

STATION	OFFSET	ELEV
240+26.03	18' LT	189.35
240+25.98	18' RT	188.22
247+02.28	16.08' LT	197.15

REVISIONS

DATE	MARK	DESCRIPTION
10/25/2021	AS-BUILT	



PROJECT ENGINEER: R. S. 6/24/19