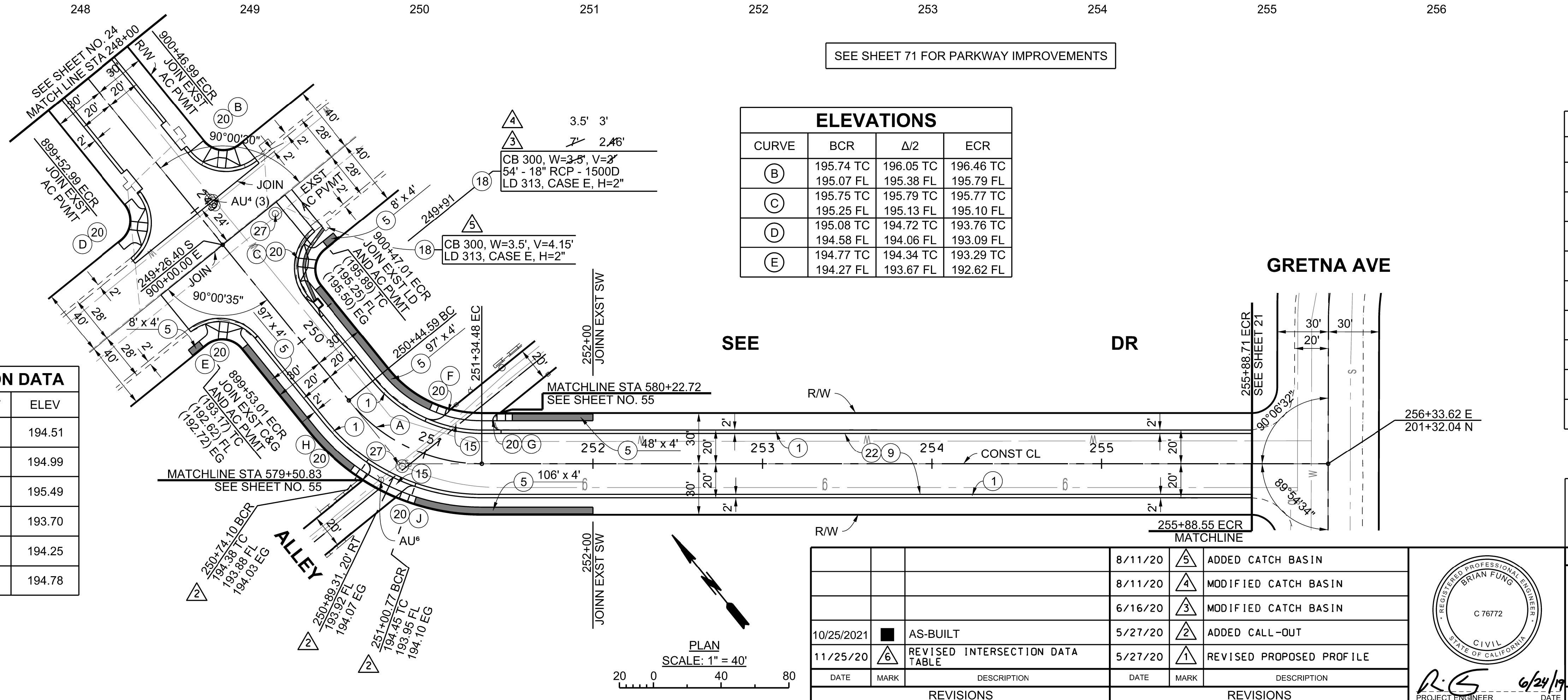
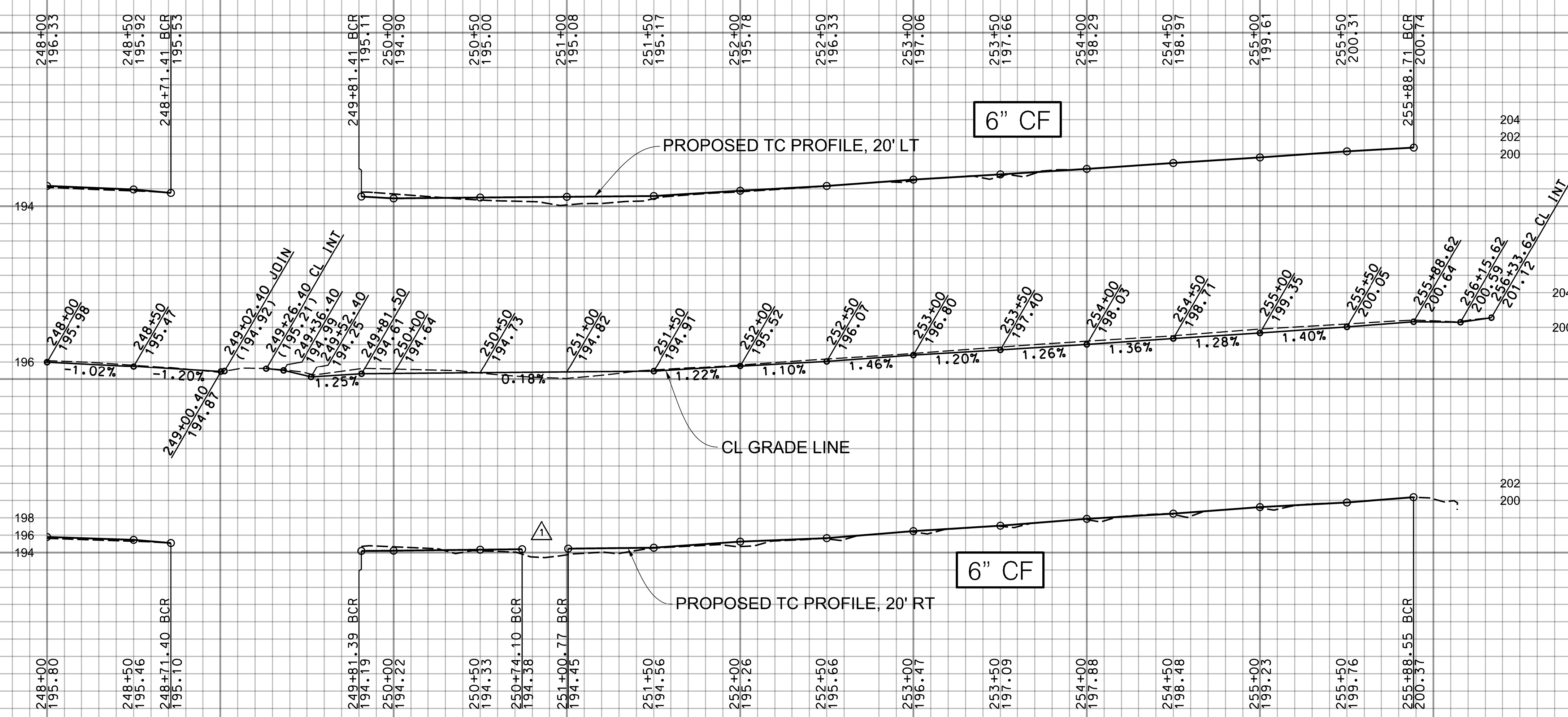


SCALE: HOR. 1"= 40'
VERT. 1"= 8'



SEE SHEET 71 FOR PARKWAY IMPROVEMENTS

ELEVATIONS			
CURVE	BCR	Δ/2	ECR
(B)	195.74 TC	196.05 TC	196.46 TC
	195.07 FL	195.38 FL	195.79 FL
(C)	195.75 TC	195.79 TC	195.77 TC
	195.25 FL	195.13 FL	195.10 FL
(D)	195.08 TC	194.72 TC	193.76 TC
	194.58 FL	194.06 FL	193.09 FL
(E)	194.77 TC	194.34 TC	193.29 TC
	194.27 FL	193.67 FL	192.62 FL

CURVE DATA				
CURVE	RADIUS	CENTRAL ANGLE	LENGTH	TANGENT
(A)	101.00'	50° 59' 36"	89.89'	48.17'
(B)	27.00'	89° 59' 30"	42.41'	27.00'
(C)	27.00'	90° 00' 44"	42.42'	27.01'
(D)	27.00'	90° 00' 21"	42.41'	27.00'
(E)	27.00'	89° 59' 25"	42.41'	27.00'
(F)	10.00'	65° 01' 56"	11.35'	6.37'
(G)	5.00'	140° 28' 47"	12.26'	13.92'
(H)	5.00'	102° 50' 12"	8.97'	6.27'
(J)	5.00'	58° 13' 54"	5.08'	2.78'

INTERSECTION DATA		
STATION	OFFSET	ELEV
899+82.00	10' RT	194.51
900+00.00	10' RT	194.99
900+18.00	10' RT	195.49
899+82.00	26' RT	193.70
900+00.00	26' RT	194.25
900+18.00	26' RT	194.78

BENCHMARK
PT 612, ELEV 193.775 (WHITTIER & BASELINE QUAD 2005), PWFB 1027, PG 977
CL INT. SEE DR & ALLEY S/O HADLEY ST FD LG BT SPK, & W PER R1, DN 1"

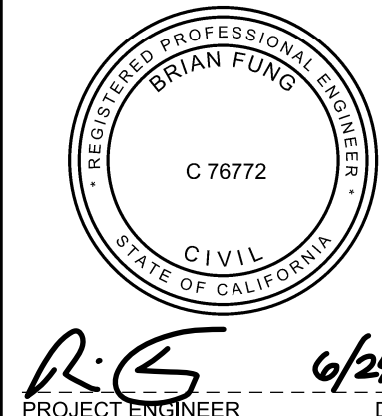
LOS ANGELES COUNTY PUBLIC WORKS

SOUTH WHITTIER LOS NIETOS
KEITH DRIVE, ET AL.

PROJECT ID NO. RMD4408001
PLAN AND PROFILE

PD PH086544 SHEET 25 OF 79

DATE	MARK	DESCRIPTION	DATE	MARK	DESCRIPTION
10/25/2021	■	AS-BUILT	8/11/20	△	ADDED CATCH BASIN
11/25/20	△	REVISED INTERSECTION DATA TABLE	8/11/20	△	MODIFIED CATCH BASIN
			6/16/20	△	MODIFIED CATCH BASIN
			5/27/20	△	ADDED CALL-OUT
			5/27/20	△	REVISED PROPOSED PROFILE



R.S. PROJECT ENGINEER
6/24/19 DATE