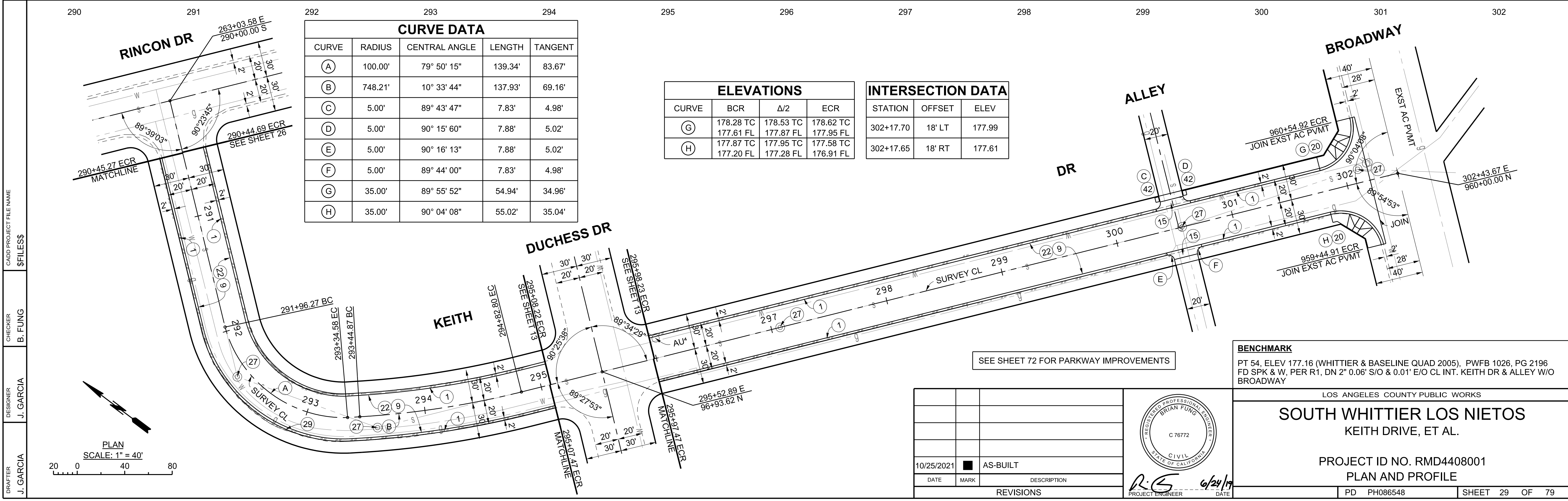
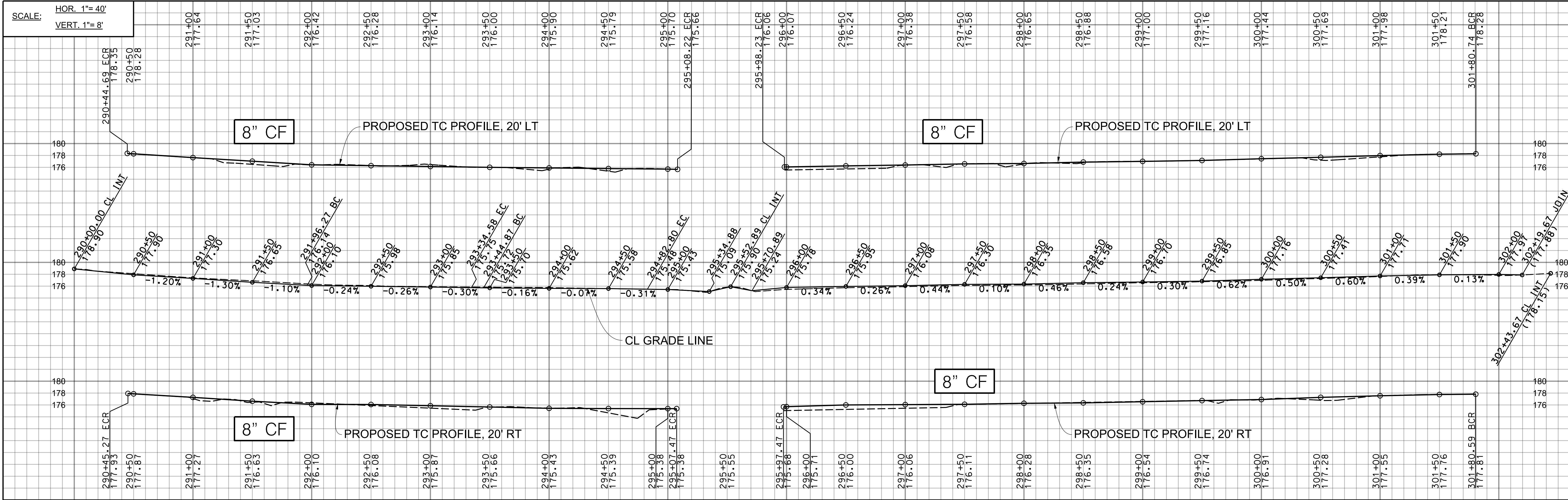


SCALE: HOR. 1"=40'
VERT. 1"=8'



CURVE DATA				
CURVE	RADIUS	CENTRAL ANGLE	LENGTH	TANGENT
(A)	100.00'	79° 50' 15"	139.34'	83.67'
(B)	748.21'	10° 33' 44"	137.93'	69.16'
(C)	5.00'	89° 43' 47"	7.83'	4.98'
(D)	5.00'	90° 15' 60"	7.88'	5.02'
(E)	5.00'	90° 16' 13"	7.88'	5.02'
(F)	5.00'	89° 44' 00"	7.83'	4.98'
(G)	35.00'	89° 55' 52"	54.94'	34.96'
(H)	35.00'	90° 04' 08"	55.02'	35.04'

ELEVATIONS			
CURVE	BCR	Δ/2	ECR
(G)	178.28 TC	178.53 TC	178.62 TC
	177.61 FL	177.87 FL	177.95 FL
(H)	177.87 TC	177.95 TC	177.58 TC
	177.20 FL	177.28 FL	176.91 FL

INTERSECTION DATA		
STATION	OFFSET	ELEV
302+17.70	18' LT	177.99
302+17.65	18' RT	177.61

BENCHMARK
PT 54, ELEV 177.16 (WHITTIER & BASELINE QUAD 2005), PWF 1026, PG 2196
FD SPK & W, PER R1, DN 2" 0.06' S/O & 0.01' E/O CL INT. KEITH DR & ALLEY W/O BROADWAY

LOS ANGELES COUNTY PUBLIC WORKS

SOUTH WHITTIER LOS NIETOS
KEITH DRIVE, ET AL.

PROJECT ID NO. RMD4408001
PLAN AND PROFILE

PD PH086548 SHEET 29 OF 79

CADD PROJECT FILE NAME: \$FILESS\$
CHECKER: B. FUNG
DESIGNER: J. GARCIA
DRAFTER: J. GARCIA



PROJECT ENGINEER: R.S. DATE: 6/24/19

DATE	MARK	DESCRIPTION
10/25/2021	AS-BUILT	
REVISIONS		

SEE SHEET 72 FOR PARKWAY IMPROVEMENTS

PLAN SCALE: 1"=40'

