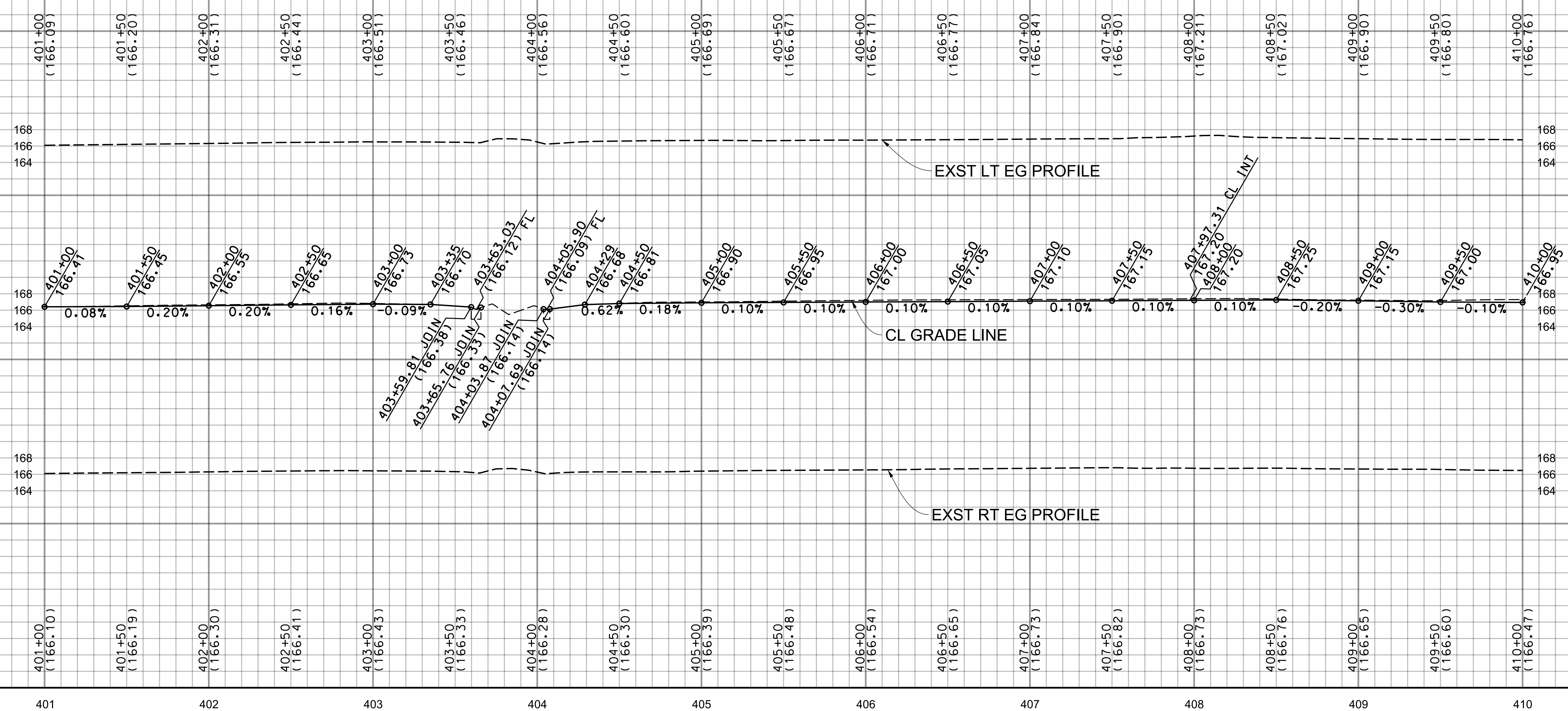
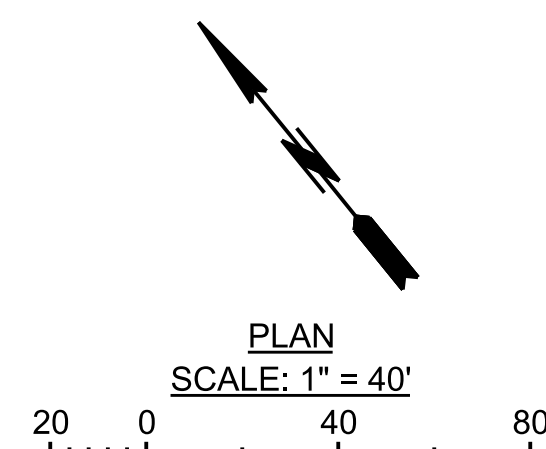
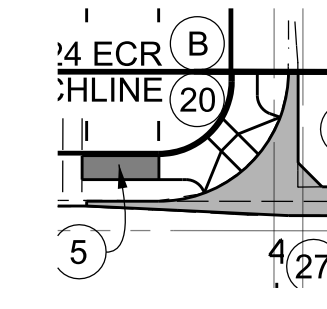
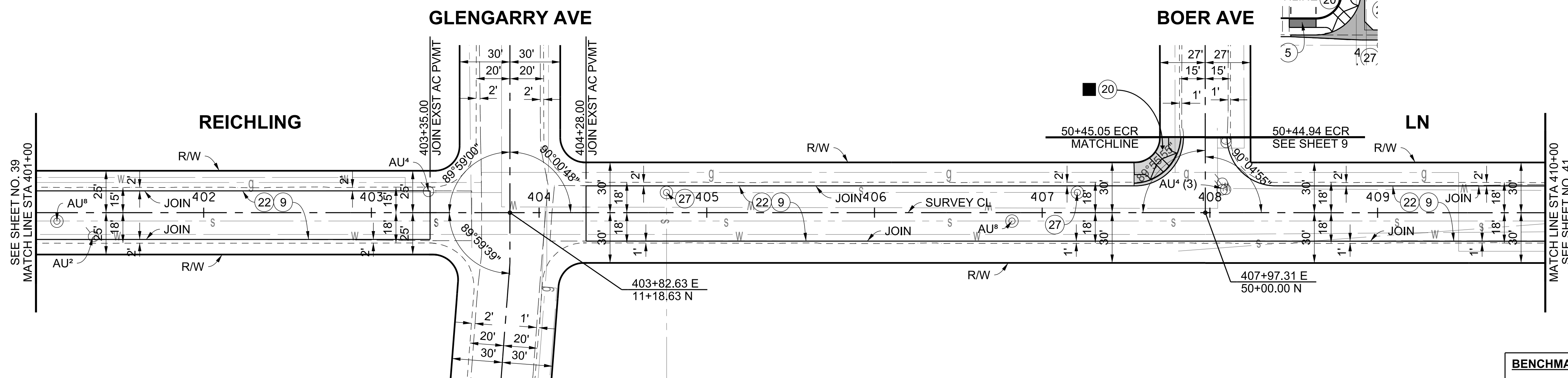


SCALE: HOR. 1"= 40'
VERT. 1"= 8'



SEE SHEET 73 FOR PARKWAY IMPROVEMENTS



THE CONTRACTOR SHALL EXERCISE EXTREME CAUTION WHEN EXCAVATING FROM NORWALK BOULEVARD TO BROADWAY ON REICHLING LANE DUE TO THE SHALLOW SEWER. THE SEWER LINE IS APPROXIMATELY 3.5 FT TO 5 FT DEEP. THE CONTRACTOR SHALL LIMIT CONSTRUCTION EQUIPMENT LOADING DIRECTLY OVER THE SEWER DURING CONSTRUCTION.

BENCHMARK
PT 167, ELEV 165.46 (WHITTIER & BASELINE QUAD 2005), PWFB 1026, PG 2127
CL INT REICHLING LN & GLENGARRY AVE FD CS MON IN WELL PER R1,
DN 18" LID FLUSH



PROJECT ENGINEER: R. S. G. DATE: 6/24/17

SOUTH WHITTIER LOS NIETOS
KEITH DRIVE, ET AL.

PROJECT ID NO. RMD4408001
PLAN AND PROFILE

PD PH086559 SHEET 40 OF 79

DATE	MARK	DESCRIPTION
10/25/2021	AS-BUILT	
REVISIONS		