

# LOS ANGELES COUNTY PUBLIC WORKS

## WEST CARSON COMMUNITY BIKEWAYS

### PROJECT ID No. RDC0016229

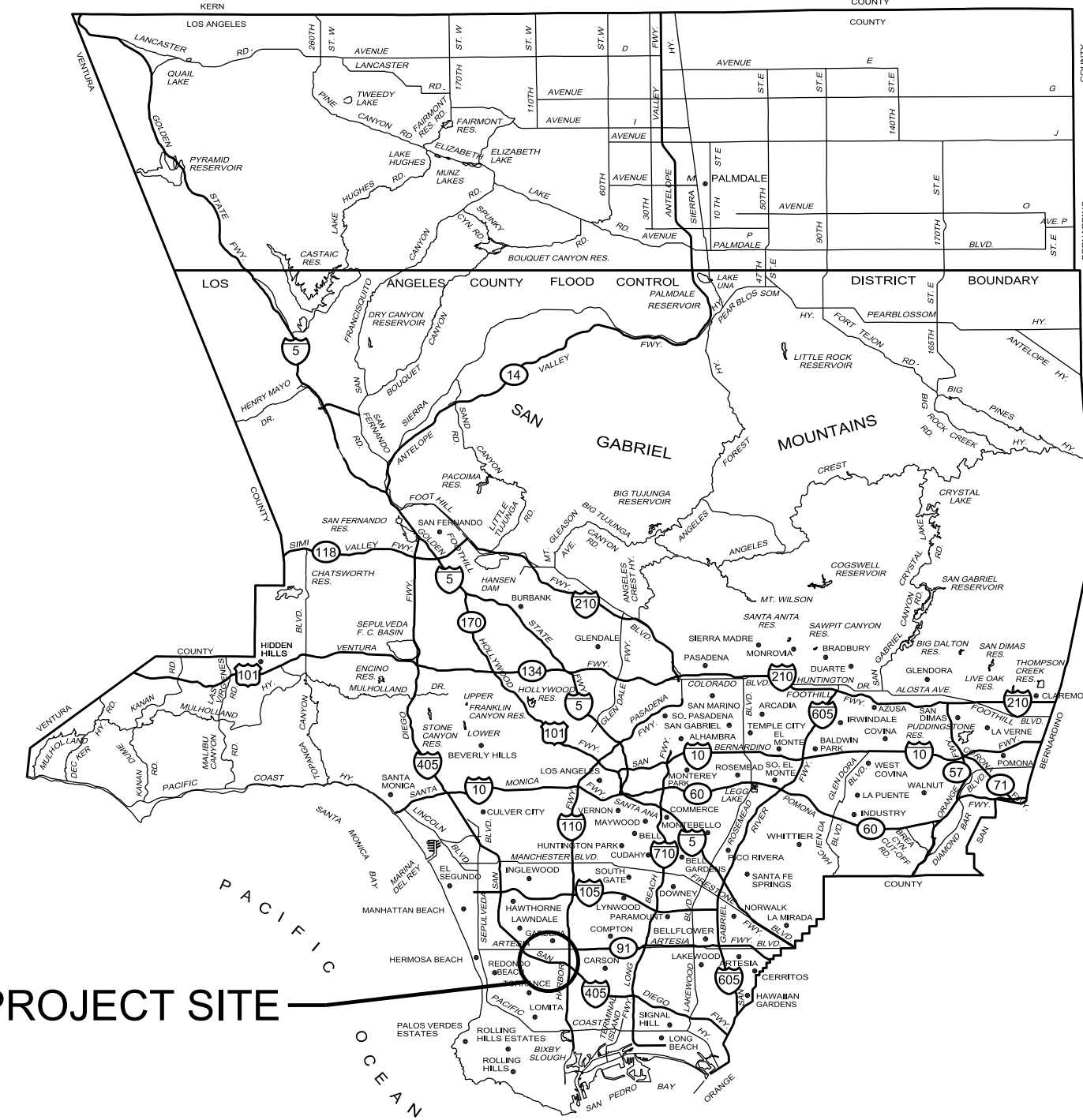
**INDEX TO PROJECT PLANS**

SHEET NUMBER	DESCRIPTION
1	TITLE SHEET
2	CONSTRUCTION NOTES AND REFERENCES
3	TYPICAL SECTIONS
4	TYPICAL SECTIONS
5-7	PLAN

PLAN TC	TRAFFIC CONTROL PLAN
PLAN TS	TRAFFIC SIGNAL PLAN
PLAN SP	SIGNING AND STRIPING PLAN

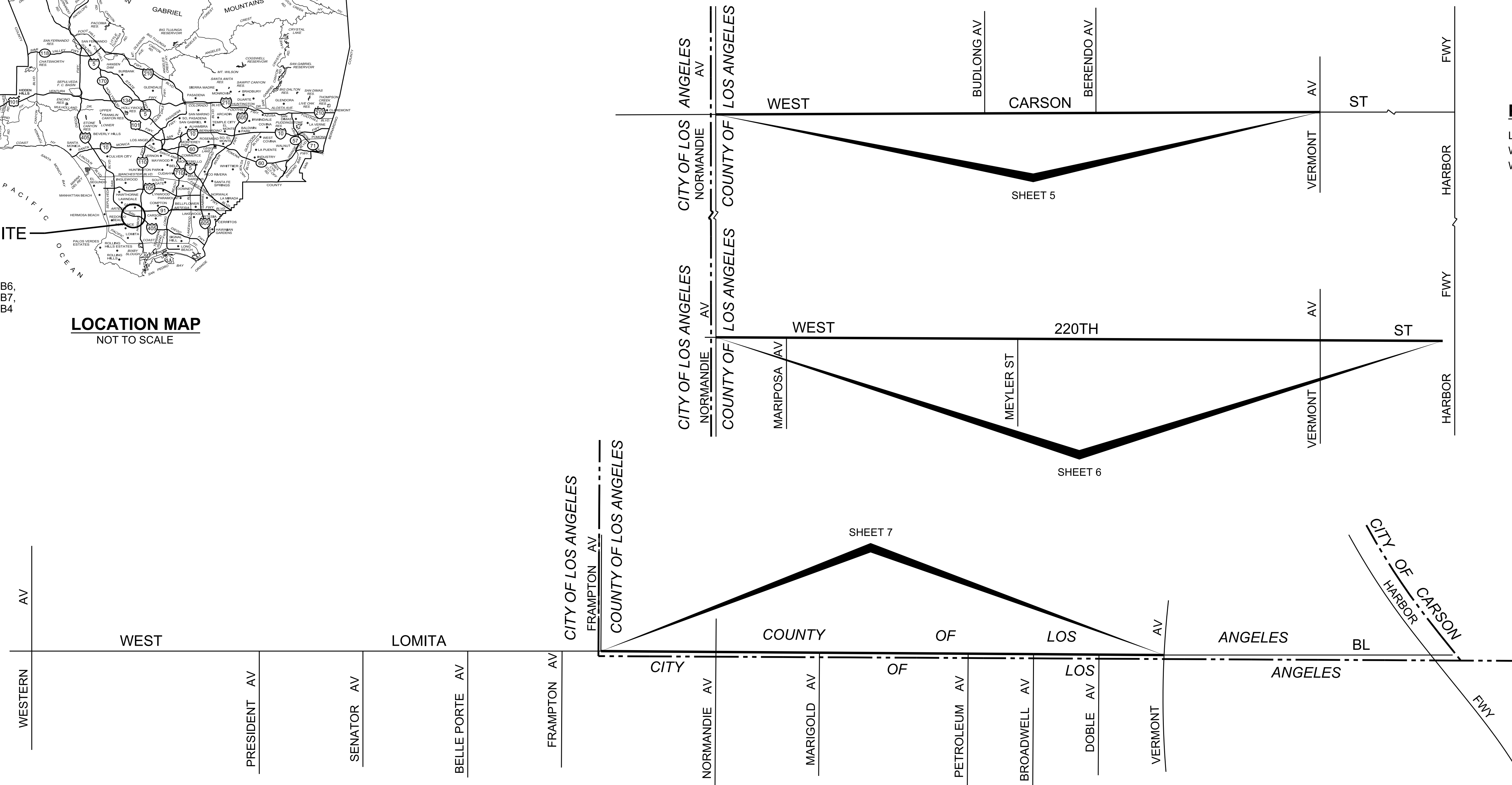
**PROJECT LIMITS**

LOMITA BL - FRAMPTON AV TO VERMONT AV  
 WEST 220TH ST - NORMANDIE AV TO HARBOR FWY  
 WEST CARSON ST - NORMANDIE AV TO VERMONT AV



T.G. 764-A6 & B6,  
 764-A7 & B7,  
 794-A4 & B4  
 R.D. 232

**LOCATION MAP**  
NOT TO SCALE



**KEY MAP**  
NO SCALE

CADD PROJECT FILE NAME: RDC0016229 - Plan RD - v4.dgn  
 CHECKER: S. DICKSON  
 DESIGNER: A.T. NGUYEN  
 DRAFTER: ATN, MG

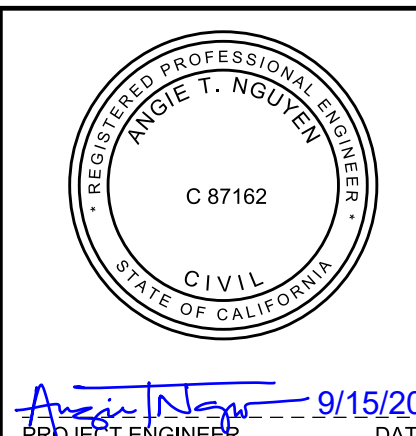


APPROVED BY MARK PESTRELLA, DIRECTOR OF PUBLIC WORKS:

*[Signature]* 09/15/20  
 ASSISTANT DEPUTY DIRECTOR DATE

SUBMITTED BY:  
*[Signature]* 9/15/20  
 DESIGN TEAM 3 DATE

DATE	MARK	DESCRIPTION
5/18/2022	■	AS-BUILT
REVISIONS		



*[Signature]* 9/15/20  
 PROJECT ENGINEER DATE

PRIME CONTRACTOR LICENSE REQUIRED: CLASS A OR C12

LOS ANGELES COUNTY PUBLIC WORKS

**WEST CARSON COMMUNITY BIKEWAYS**

PROJECT ID NO. RDC0016229  
 TITLE SHEET

PH 086660 SHEET 1 OF 8

**CONSTRUCTION LEGEND**

- ① PORTLAND CEMENT CONCRETE CURB & GUTTER, A3-8, W=12"
- ⑤ PCC WALK, 4" THICK, ON 6" CMB
- ⑦ PCC PAVEMENT ON BASE MATERIAL
- ⑧ AC PAVEMENT
- ⑨ AC PAVEMENT (ON BASE MATERIAL)
- ⑬ COLD MILL AC PAVEMENT
- ⑯ CROSS GUTTER ON 6" CMB
- ⑳ CURB RAMP, CASE B, UNLESS OTHERWISE SHOWN
- ㉒ ASPHALT RUBBER HOT MIX (ARHM-GG-C)
- ㉔ DOUBLE ADJUST MANHOLE
- ㉗ RECONSTRUCT MANHOLE

**CONSTRUCTION NOTES**

1. STANDARD PLANS REFERENCED ARE PER THE STANDARD PLANS FOR PUBLIC WORKS CONSTRUCTION (SPPWC) UNLESS OTHERWISE NOTED.
2. ELEVATIONS SHOWN ARE IN FEET BASED ON GARDENA QUAD, NAVD 1988 DATUM.
3. ALL RESURFACING, CURBS, GUTTERS, SIDEWALKS, DRIVEWAYS AND OTHER EXISTING IMPROVEMENTS TO BE RECONSTRUCTED SHALL BE CONSTRUCTED AT THE SAME ELEVATION AND LOCATION AS THE EXISTING IMPROVEMENTS, UNLESS OTHERWISE NOTED.
4. ALL FIELD BOOK REFERENCES ARE TO LOS ANGELES COUNTY PUBLIC WORKS FIELD BOOKS, UNLESS OTHERWISE NOTED.
5. WITHIN THE PROJECT LIMITS, THE CONTRACTOR SHALL INSTALL A BLUE RAISED RETROREFLECTIVE PAVEMENT MARKER (RPM) ON THE FINISHED SURFACE AT EACH FIRE HYDRANT LOCATION PER CALIFORNIA 2014 MUTCD PART 3, FIGURE 3B-102(CA), AS DESCRIBED IN THE SPECIAL PROVISIONS.

**STANDARD PLANS**

- SPPWC, 2012 EDITION
- 120-2 CURB AND GUTTER - BARRIER
  - 122-2 CROSS AND LONGITUDINAL GUTTERS
  - 141-2 MEDIAN FLARE
  - 140-3 MEDIAN TAPER

**TOPOGRAPHY LEGEND**

	EXISTING TOPOGRAPHY	PROPOSED IMPROVEMENTS
CURB		
CURB AND GUTTER		
GUTTER		
CONCRETE PAVEMENT		
AC PAVEMENT		
CURB RAMP		
BUILDING		
FENCE		
GUY POLE		
DRIVEWAY		
FIRE HYDRANT		
GUY WIRE		
MANHOLE		
POLE		
R/W LINE		
PULL BOX		
SIDEWALK		
SIGNAL CONTROL BOX		
SIGNAL FLASHING TRAFFIC		
STREET LIGHT		
PALM TREE		
OAK TREE		
OTHER TREE		
VALVE		
VAULT		

**UTILITIES**

- CABLE: CHARTER COMMUNICATIONS
- GAS: SOUTHERN CALIFORNIA GAS COMPANY
- OIL: BREA CANYON OIL CO.  
CHEVRON PIPELINE CO.  
PHILLIPS 66 PIPELINE LLC.  
TORRANCE PIPELINE CO.
- POWER: LOS ANGELES DEPARTMENT OF WATER AND POWER  
SOUTHERN CALIFORNIA EDISON
- SEWER: LOS ANGELES COUNTY SANITATION DISTRICTS  
LOS ANGELES SEWER MAINTENANCE DIVISION
- STREET LIGHTS: LOS ANGELES BUREAU OF STREET LIGHTING  
SOUTHERN CALIFORNIA EDISON
- TELEPHONE: AT&T
- WATER: CALIFORNIA WATER SERVICE  
LOS ANGELES DEPARTMENT OF WATER AND POWER  
THE METROPOLITAN WATER DISTRICT OF SOUTHERN CALIFORNIA
- ELECTRIC: e
- FIBER OPTIC: fo
- GAS: g
- OIL: o
- SEWER: s
- DRAINAGE: sd
- TELEPHONE: t
- WATER: w

**CONSTRUCTION SYMBOLS**

- (NO) INDICATES WORK PER CONSTRUCTION LEGEND
- (It.) CURVE DATA SHOWN IN TABLE ON PLAN
- (NO) <sup>2" P4</sup> ABOVE LINE: INDICATES THE TYPE OF STANDARD OR THICKNESS OF SURFACE MATERIAL IN INCHES, STANDARD PLAN VARIABLES; CURB RAMP CASE, TYPE, SECTION AND DETAIL; OR TREE PLANTING CASE
- (NO) <sup>5" CMB</sup> BELOW LINE: REFERENCE TO DETAIL OR THICKNESS OR BASE MATERIAL IN INCHES OR TREE WELL CASE
- (NO) <sup>A x B</sup> ABOVE LINE: A = LENGTH PARALLEL TO CURB  
B = LENGTH PERPENDICULAR TO CURB
- (MT) <sup>W</sup>/<sub>L</sub> MEDIAN TAPER PER STD PLAN 140-3
- (MF) <sup>W</sup>/<sub>L</sub> MEDIAN FLARE PER STD PLAN 141-2
- RU UTILITY TO BE RELOCATED BY OWNER
- AU (#) UTILITY TO BE ADJUSTED BY OWNER  
# INDICATES NUMBER OF UTILITIES

**ABBREVIATIONS**

ABBREVIATION	WORD OR WORDS
AC	ASPHALT CONCRETE
AU	ADJUSTED BY OTHERS
AV	AVENUE
BC	BEGINNING OF CURVE
BCR	BEGINNING OF CURB RETURN
BL	BOULEVARD
BM	BENCH MARK
CL	CENTER LINE
CMB	CRUSHED MISCELLANEOUS BASE
CMP	CORRUGATED METAL PIPE
CONST	CONSTRUCT. CONSTRUCTION
CY	CUBIC YARD
DIA	DIAMETER
EC	END OF CURVE
ECR	END OF CURB RETURN
EL	ELEVATION
EXST	EXISTING
FL	FLOW LINE
H	HORIZONTAL
L	LENGTH
LEFT	LEFT
LACPW	LOS ANGELES COUNTY PUBLIC WORKS
MAX	MAXIMUM
MED	MEDIAN
MF	MEDIAN FLARE
MH	MANHOLE
MIN	MINIMUM
MT	MEDIAN TAPER
PVMT	PAVEMENT
SD	STORM DRAIN
SF	SQUARE FOOT
SS	SANITARY SEWER
SPPWC	STANDARD PLANS FOR PUBLIC WORKS CONSTRUCTION
ST	STREET
STA	STATION
STD	STANDARD
STR GRD	STRAIGHT GRADE
RT	RIGHT
R/W	RIGHT-OF-WAY
TYP	TYPICAL
V	VERTICAL
W	WIDTH

**REFERENCES**

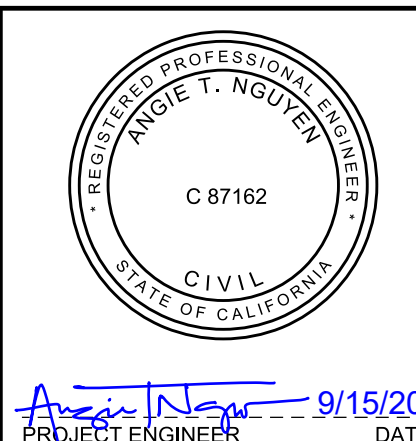
1. SURVEY FIELD NOTES:  
PWFB 0319, PG 1864-1876  
PWFB 0419, PG 1719-1721  
PWFB 0519, PG 1744-1754  
PWFB 0520, PG 2092-2094
2. PRELIMINARY MATERIALS TEST REPORT:  
LAB NO.37514, DATED: 3/6/19

**AC PAVEMENT CLASS AND GRADE LEGEND**

- P1 C2-PG 64-10
- P2 C2-PG 64-10
- P3 B-PG 64-10
- P4 D2-PG 64-10

CADD PROJECT FILE NAME: RDC0016229 - Plan RD - v4.dgn  
 CHECKER: S. DICKSON  
 DESIGNER: A.T. NGUYEN  
 DRAFTER: ATN, MG

DATE	MARK	DESCRIPTION
5/18/2022	■	AS-BUILT
REVISIONS		



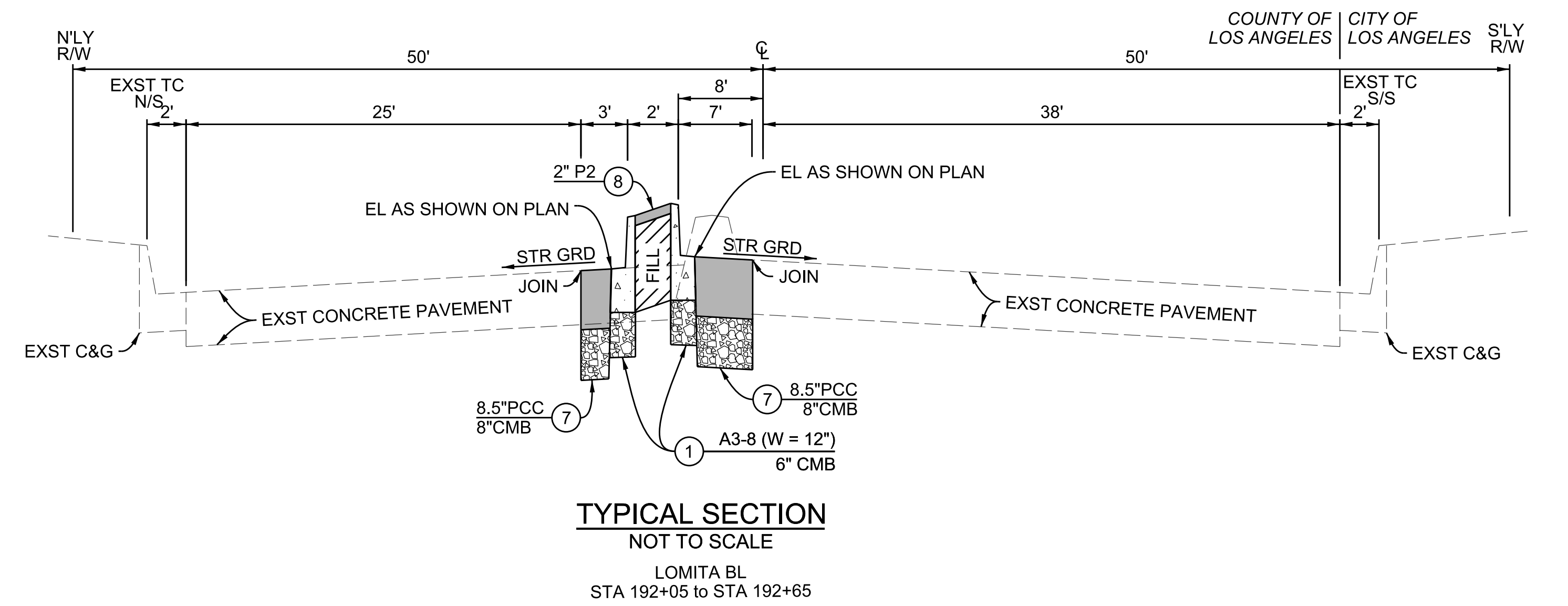
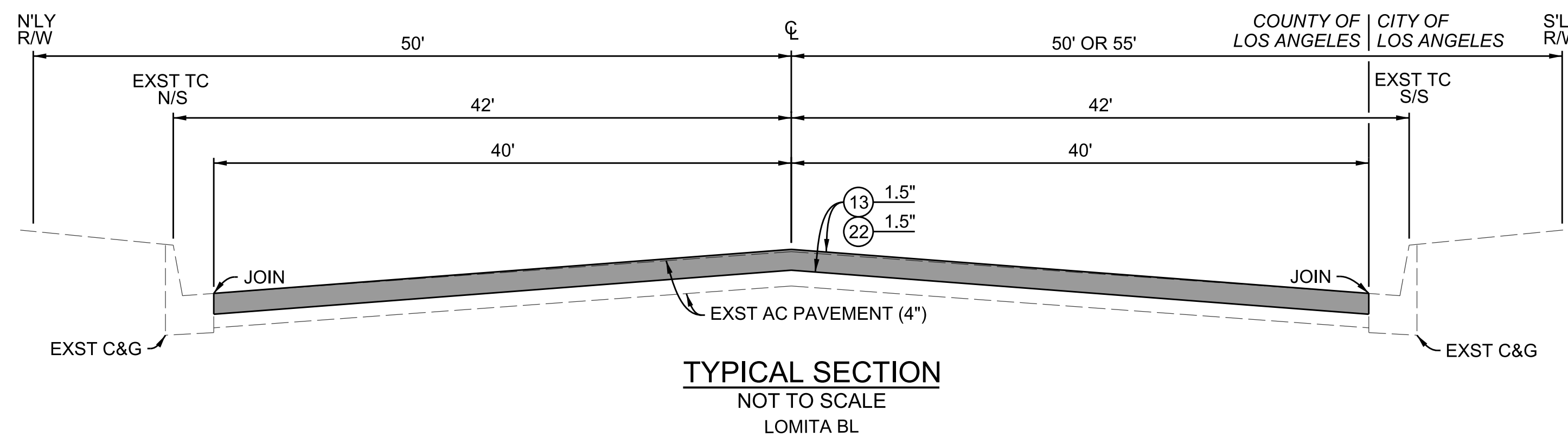
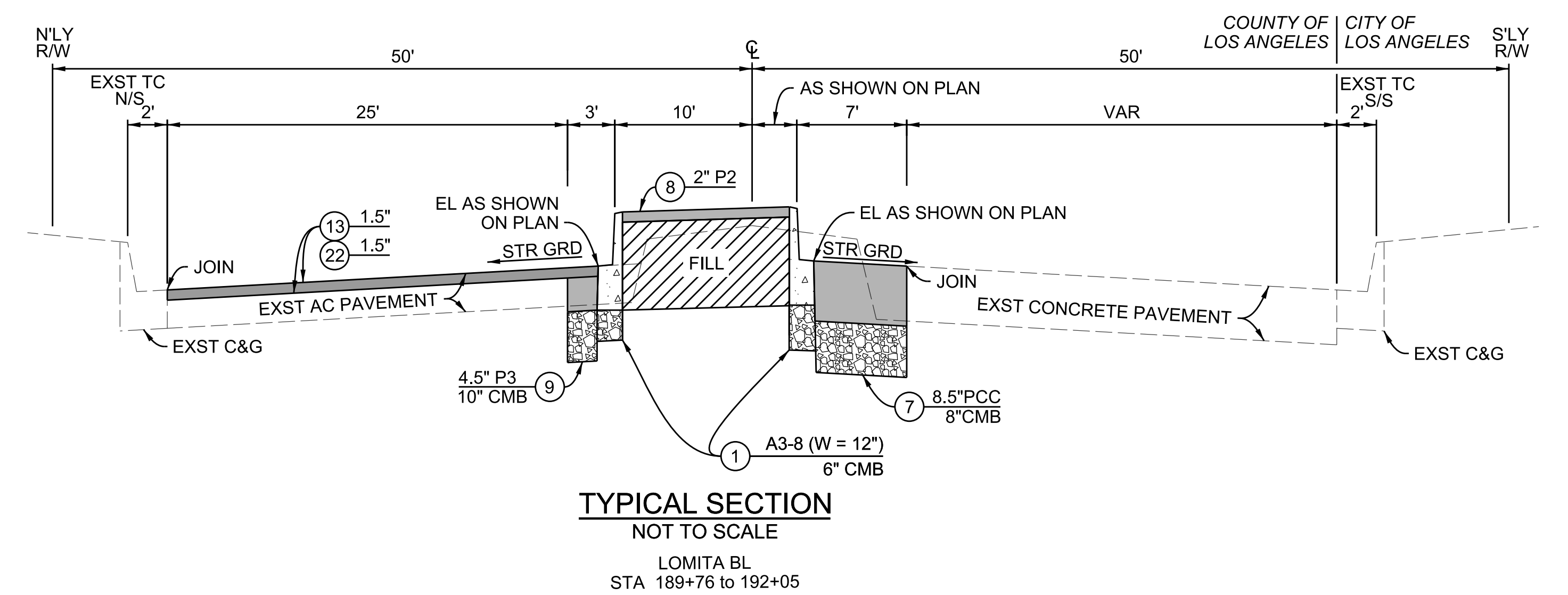
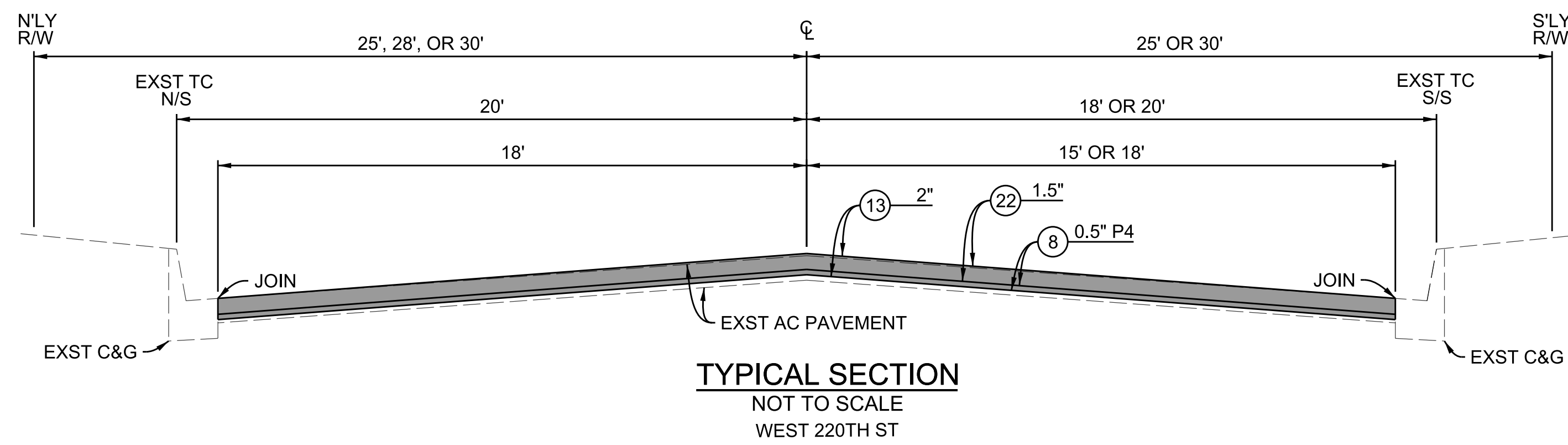
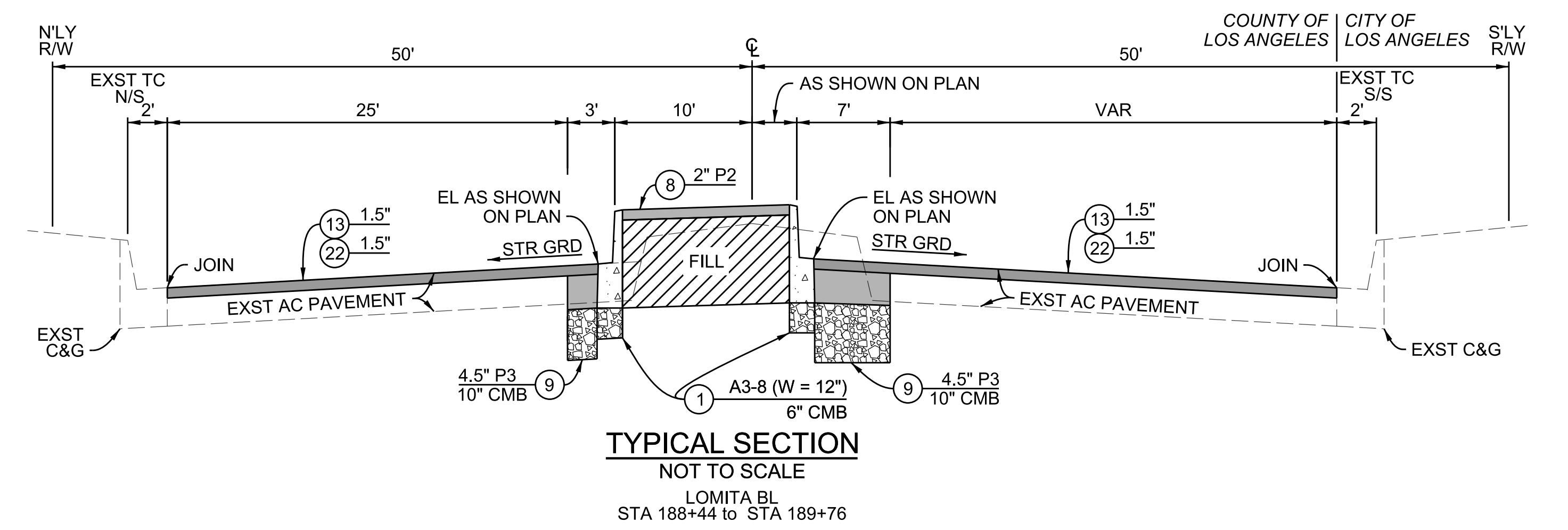
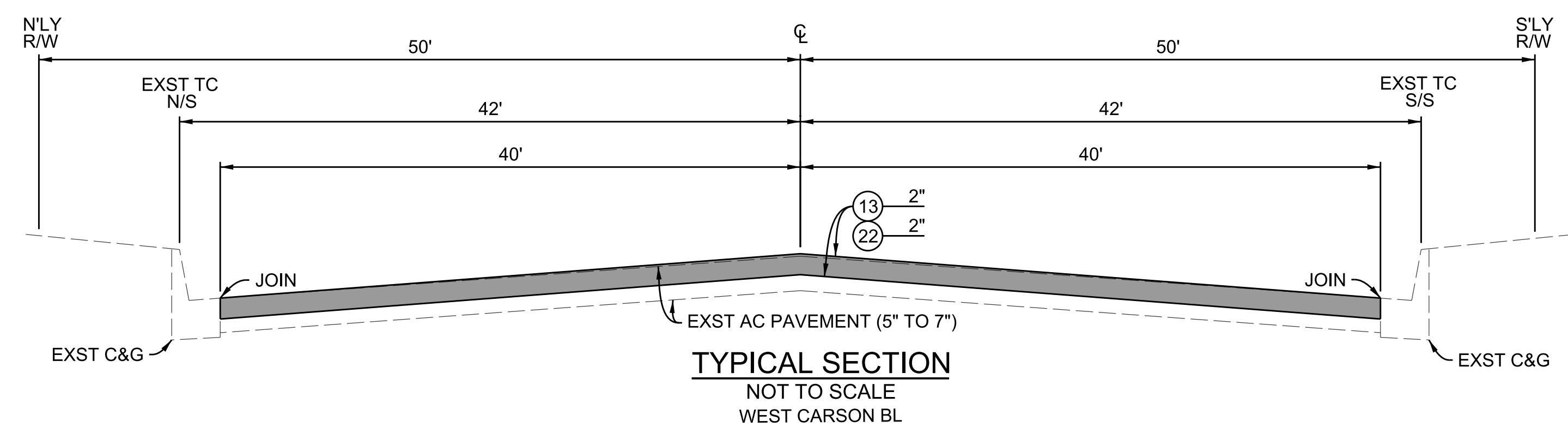
LOS ANGELES COUNTY PUBLIC WORKS

**WEST CARSON COMMUNITY BIKEWAYS**

PROJECT ID NO. RDC0016229

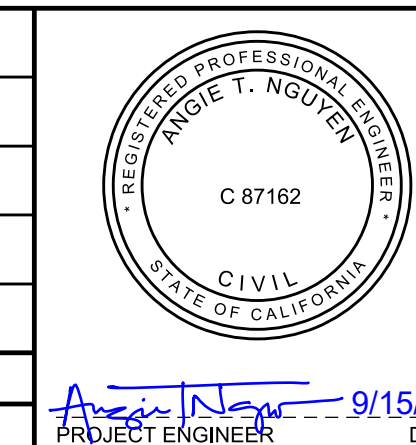
CONSTRUCTION NOTES AND REFERENCES

PH 086660 SHEET 2 OF 8



CADD PROJECT FILE NAME: RDC0016229 - Plan RD - v4.dgn  
 CHECKER: S. DICKSON  
 DESIGNER: A.T. NGUYEN  
 DRAFTER: ATN, MG

DATE	MARK	DESCRIPTION
5/18/2022		AS-BUILT
REVISIONS		



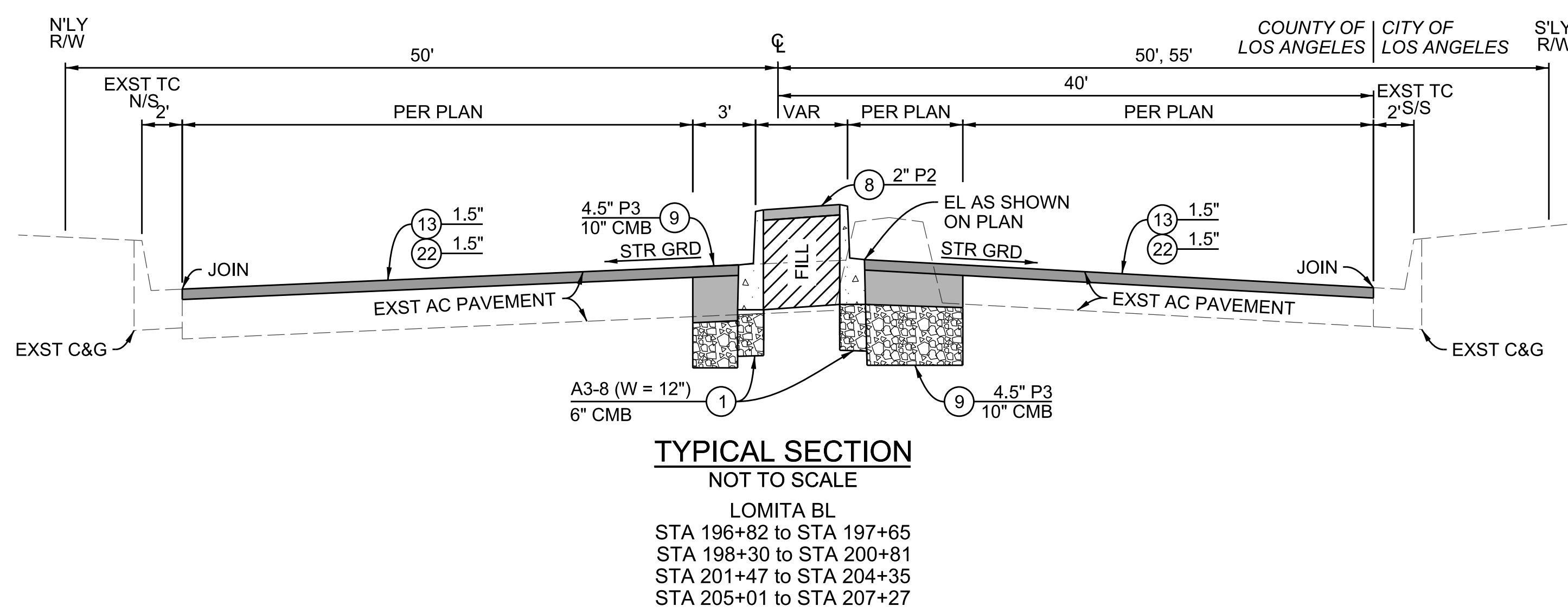
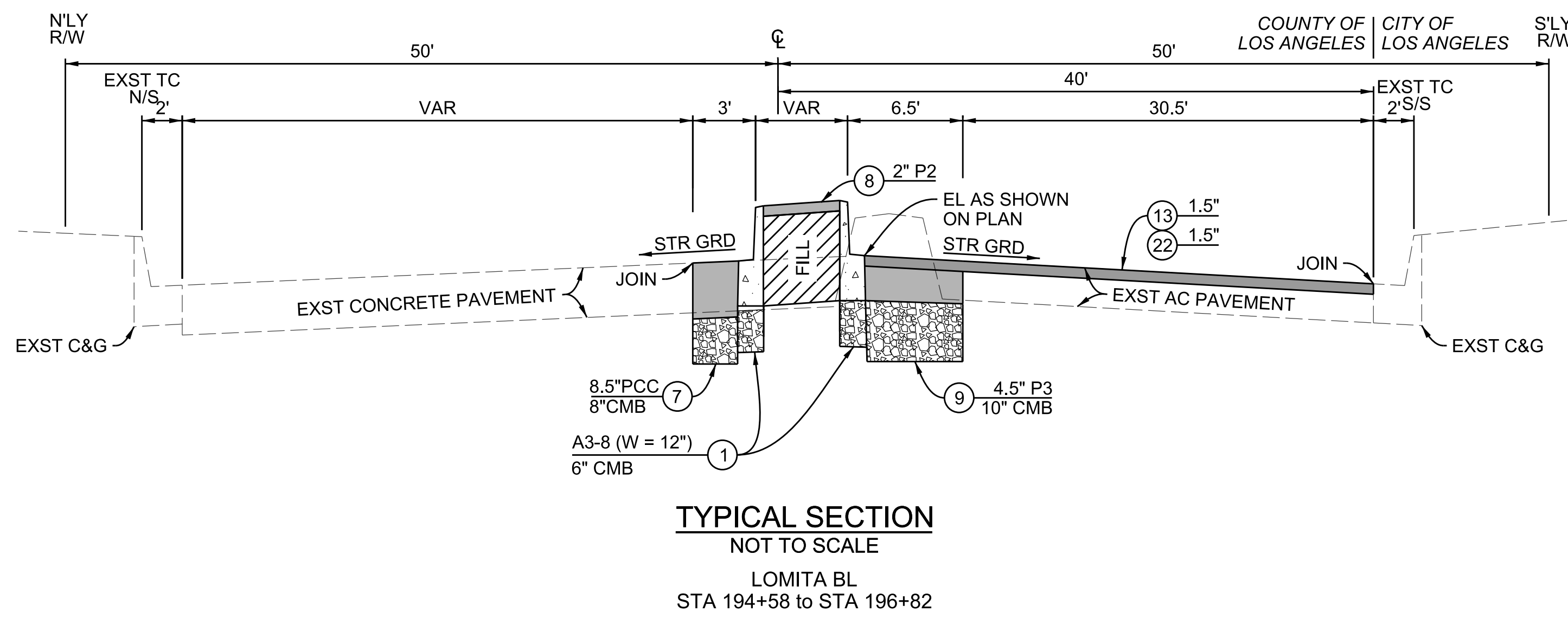
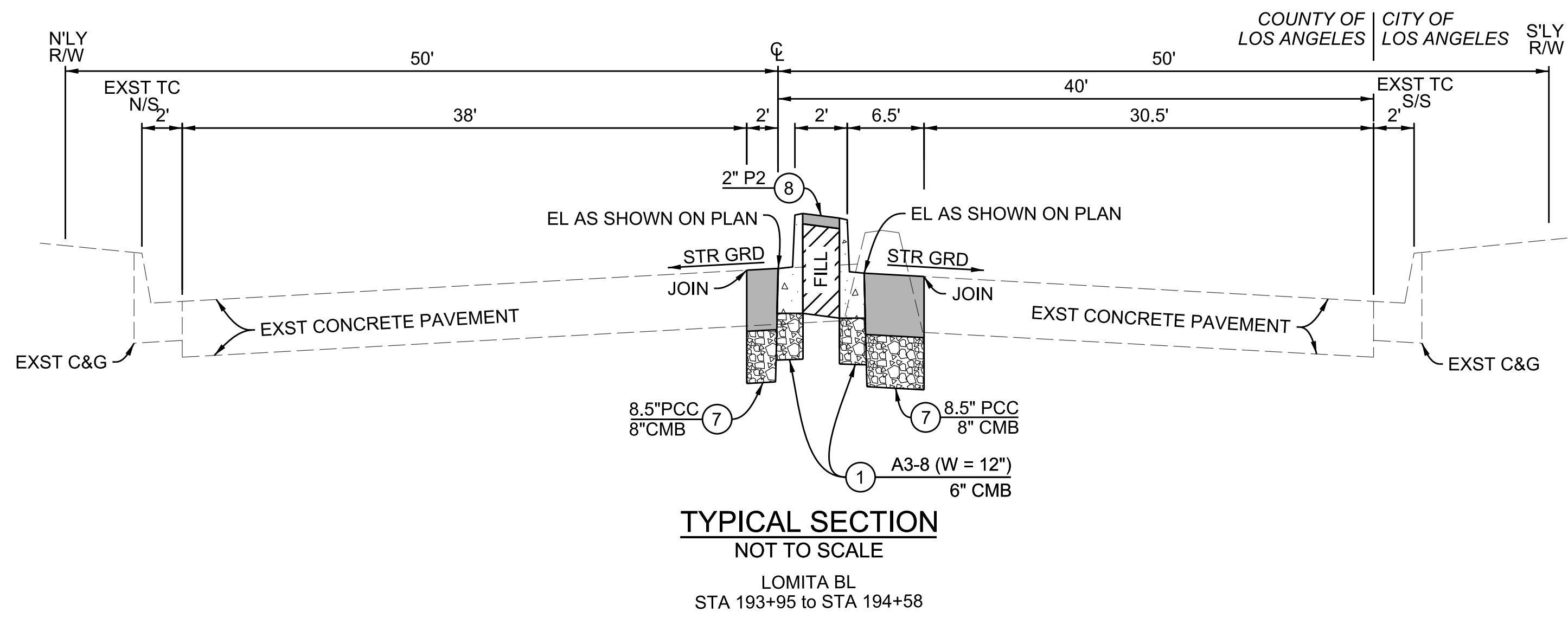
LOS ANGELES COUNTY PUBLIC WORKS

**WEST CARSON COMMUNITY BIKEWAYS**

PROJECT ID NO. RDC0016229

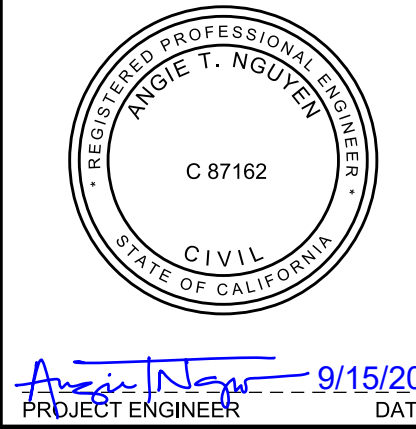
TYPICAL SECTIONS

PH\_086600 SHEET 3 OF 8



CADD PROJECT FILE NAME: RDC0016229 - Plan RD - v4.dgn  
CHECKER: S. DICKSON  
DESIGNER: A.T. NGUYEN  
DRAFTER: ATN, MG

DATE	MARK	DESCRIPTION
5/18/2022		AS-BUILT
REVISIONS		



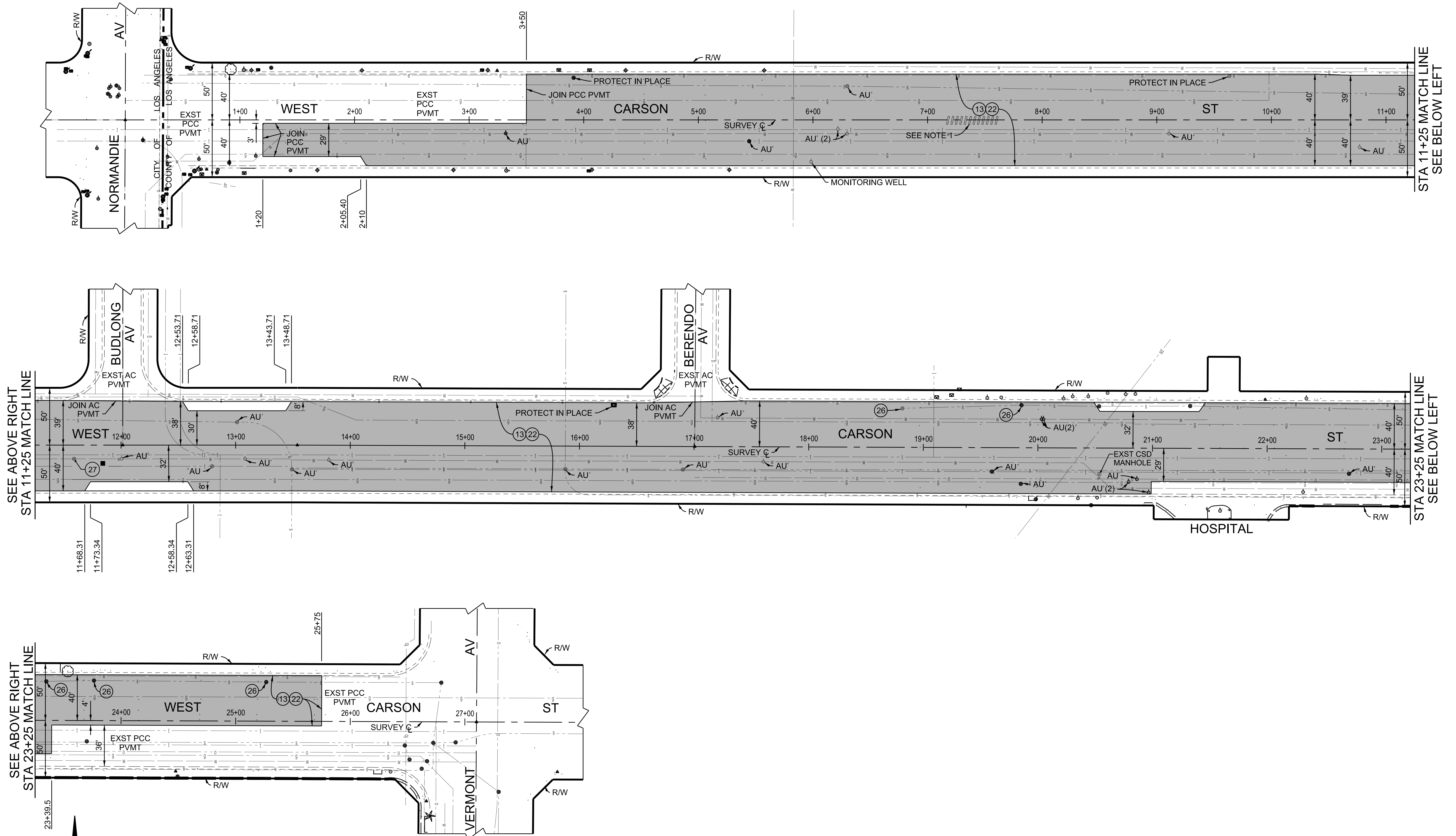
LOS ANGELES COUNTY PUBLIC WORKS

**WEST CARSON COMMUNITY BIKEWAYS**

PROJECT ID NO. RDC0016229

TYPICAL SECTIONS

PH 086660 SHEET 4 OF 8

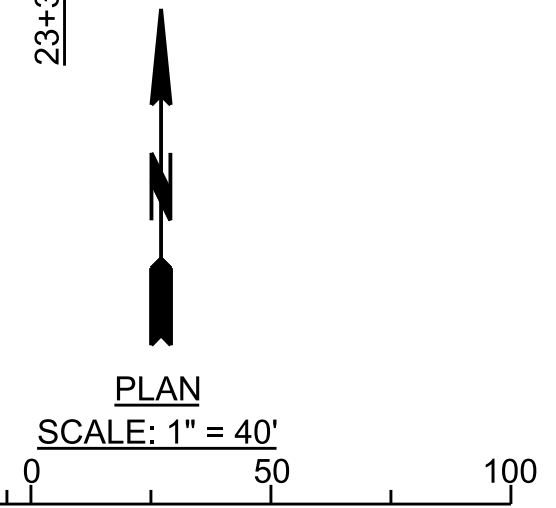


SEE ABOVE RIGHT  
STA 11+25 MATCH LINE

SEE ABOVE RIGHT  
STA 23+25 MATCH LINE

STA 11+25 MATCH LINE  
SEE BELOW LEFT

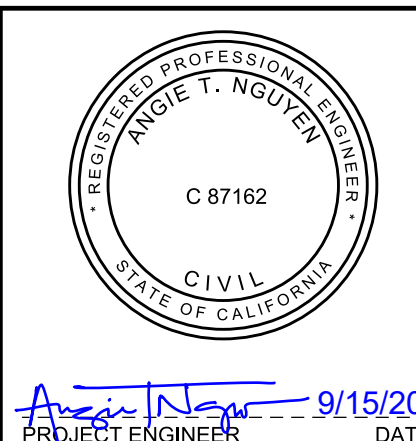
STA 23+25 MATCH LINE  
SEE BELOW LEFT



**BENCHMARK**  
PT 1, ELEV 48.295R2, PWFB 0519, PG 1745  
WEST CARSON ST AND NORMANDIE AVE, SE CORNER  
NAD 83, CA ZONE 5

- NOTE:**
- a. AT&T
  - c. LA DWP
  - d. CALIFORNIA WATER SERVICE
  - e. SOUTHERN CALIFORNIA EDISON
  - s. L.A. COUNTY SANITATION DISTRICT
  - w. METROPOLITAN WATER DISTRICT
  - t. TORRANCE PIPELINE COMPANY LLC
  - 1. REMOVE EXST WHEEL STOPS

DATE	MARK	DESCRIPTION
5/18/2022	■	AS-BUILT
REVISIONS		



LOS ANGELES COUNTY PUBLIC WORKS

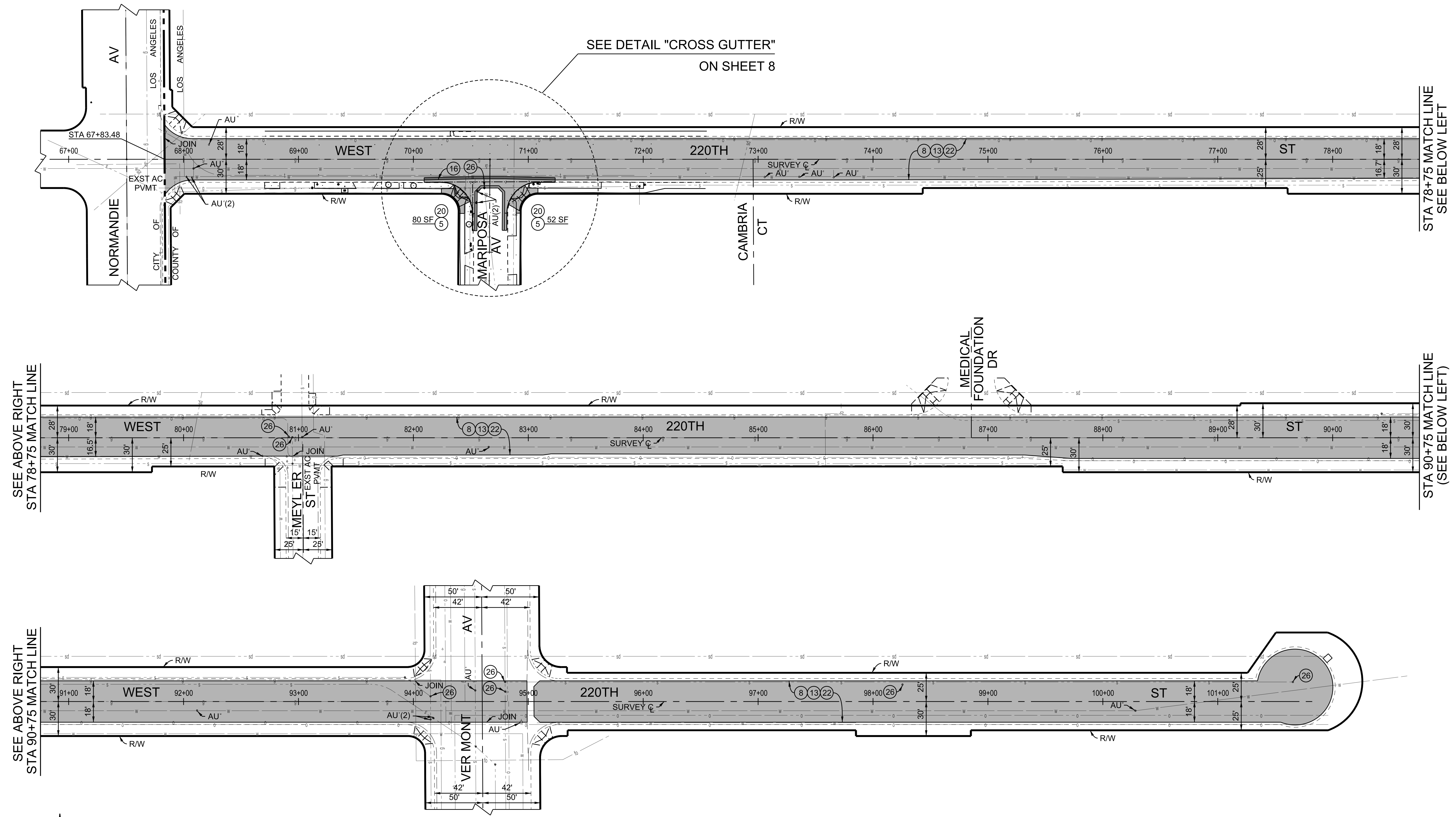
## WEST CARSON COMMUNITY BIKEWAYS

PROJECT ID NO. RDC0016229

### PLAN

PH 086660 SHEET 5 OF 8

DRAFTER: ATN, MG  
 DESIGNER: A.T. NGUYEN  
 CHECKER: S. DICKSON  
 CADD PROJECT FILE NAME: RDC0016229 - Plan RD - v4.dgn



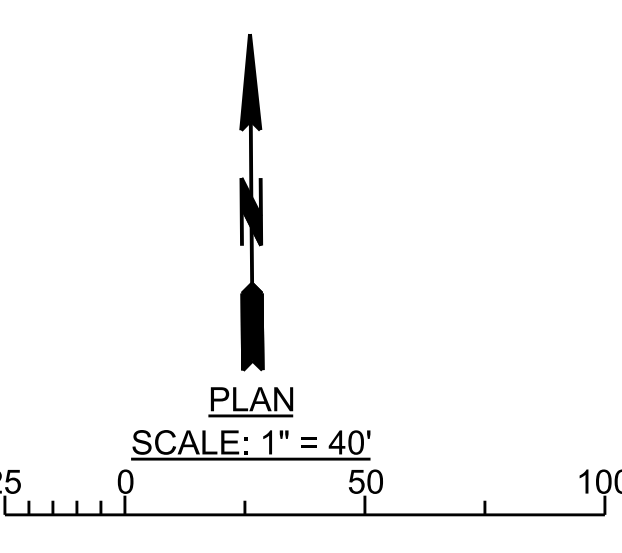
SEE DETAIL "CROSS GUTTER"  
ON SHEET 8

SEE ABOVE RIGHT  
STA 78+75 MATCH LINE

SEE BELOW LEFT  
STA 78+75 MATCH LINE

SEE ABOVE RIGHT  
STA 90+75 MATCH LINE

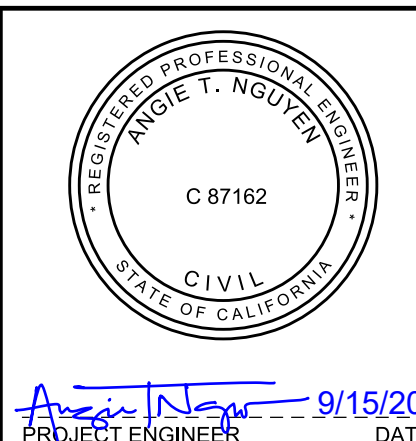
SEE BELOW LEFT  
STA 90+75 MATCH LINE



**BENCHMARK**  
PT 6, ELEV 46.23R3, PWFB 0419, PG 1719  
WEST 220TH ST AND NORMANDIE AVE  
CL INT. ANGLE PT. FD. MAG NAIL FL.R1

**NOTE:**  
a. AT&T  
b. LA DWP  
c. CALIFORNIA WATER SERVICE  
d. SOUTHERN CALIFORNIA EDISON  
e. L.A. COUNTY SANITATION DISTRICT  
f. TORRANCE PIPELINE COMPANY LLC  
g. METROPOLITAN WATER DISTRICT

DATE	MARK	DESCRIPTION
5/18/2022		AS-BUILT
REVISIONS		



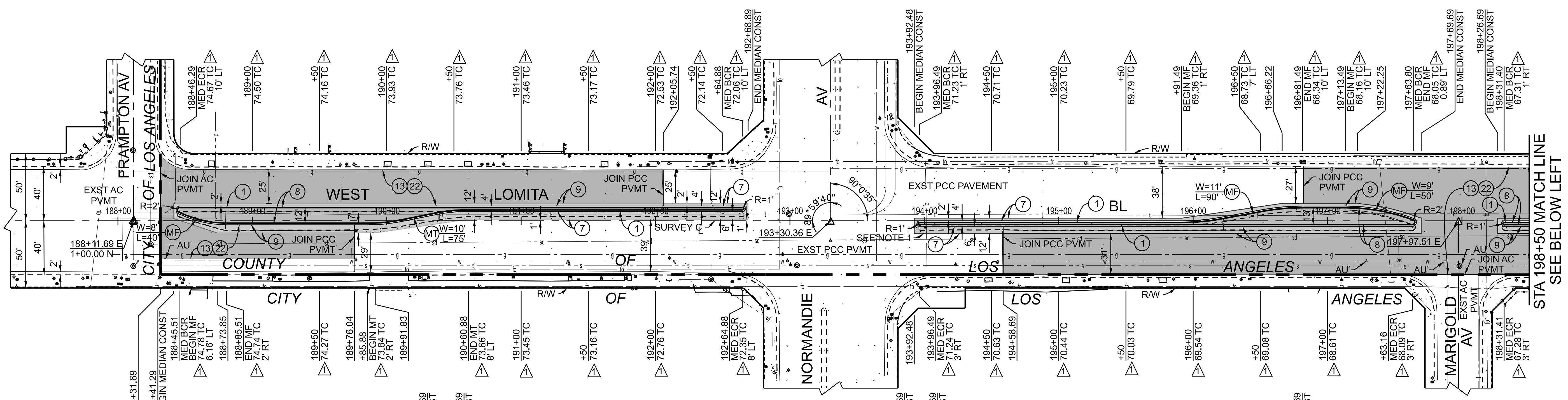
LOS ANGELES COUNTY PUBLIC WORKS

## WEST CARSON COMMUNITY BIKEWAYS

PROJECT ID NO. RDC0016229

### PLAN

PH 086660 SHEET 6 OF 8



SEE ABOVE RIGHT  
STA 209+50 MATCH LINE

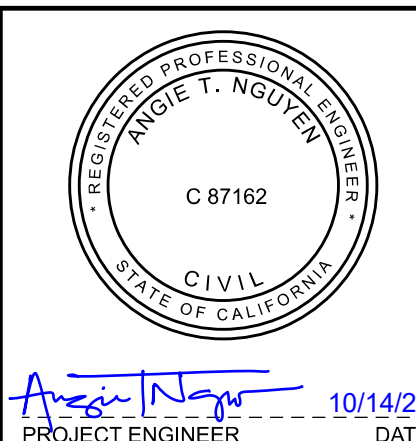
SEE BELOW LEFT  
STA 198+50 MATCH LINE

SEE BELOW LEFT  
STA 209+50 MATCH LINE

- NOTE:**
- a. AT&T
  - c. LA DWP
  - d. CALIFORNIA WATER SERVICE
  - e. SOUTHERN CALIFORNIA EDISON
  - g. SO CAL GAS
  - s. L.A. COUNTY SANITATION DISTRICT
  - t. TORRANCE PIPELINE COMPANY LLC
  - u. LA CITY DEPARTMENT OF TRANSPORTATION
  - w. METROPOLITAN WATER DISTRICT
  - 1. REMOVE ABANDONED PULL BOX AND INTERFERING CONDUITS AND WIRES.

**BENCHMARK**  
PT 17, ELEV 73.83(LP-4), PWLB 0319, PG 1871  
FRAMPTON AV AND LOMITA BL  
CL INT., SPK & DPW W, FL. FP-1

DATE	MARK	DESCRIPTION
5/18/2022	■	AS-BUILT
10/14/2021	▲	CONVERT EG ELEVATIONS TO TC
REVISIONS		



LOS ANGELES COUNTY PUBLIC WORKS

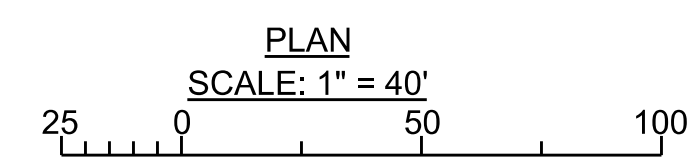
**WEST CARSON COMMUNITY BIKEWAYS**

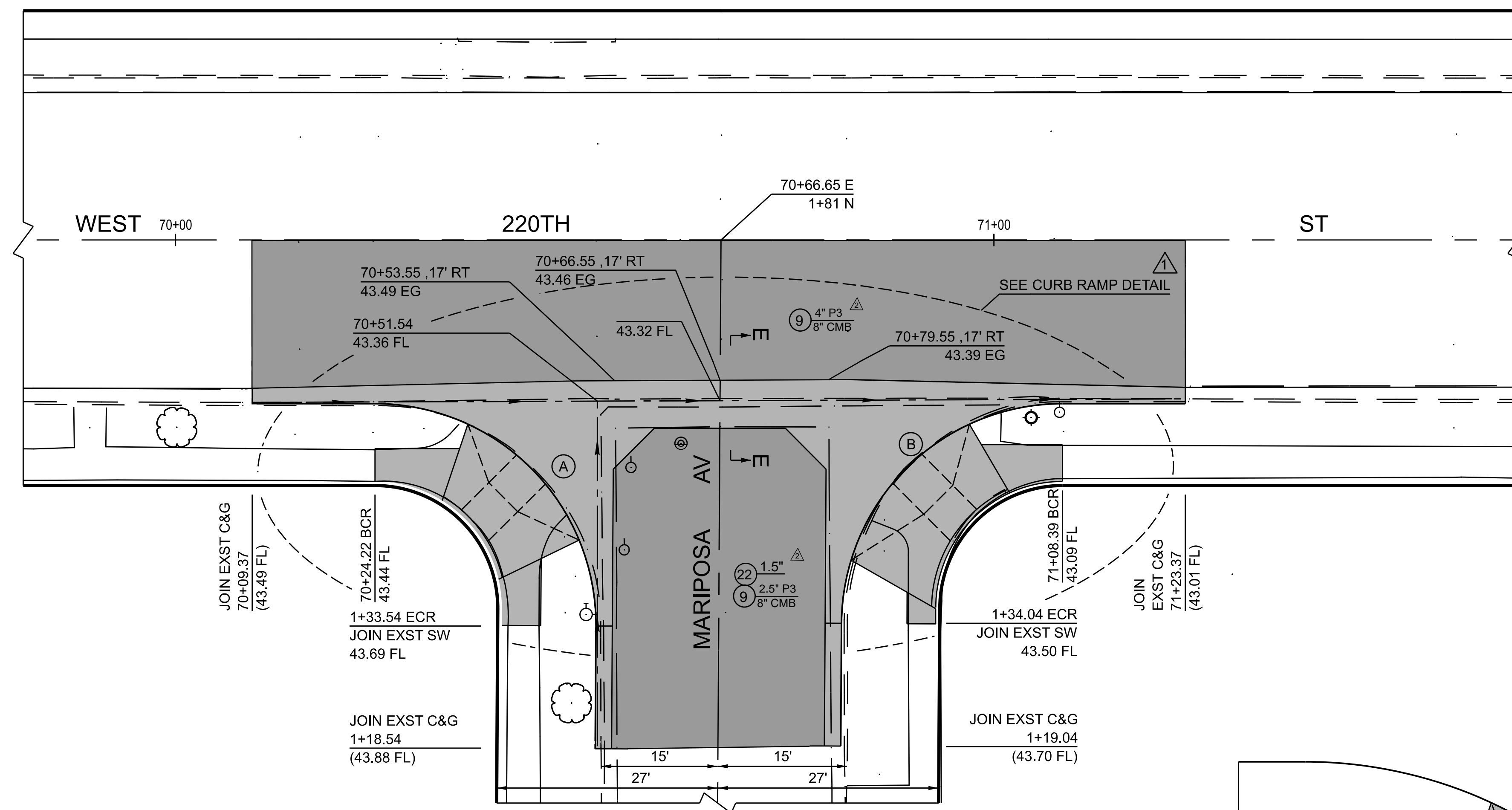
PROJECT ID NO. RDC0016229

PLAN

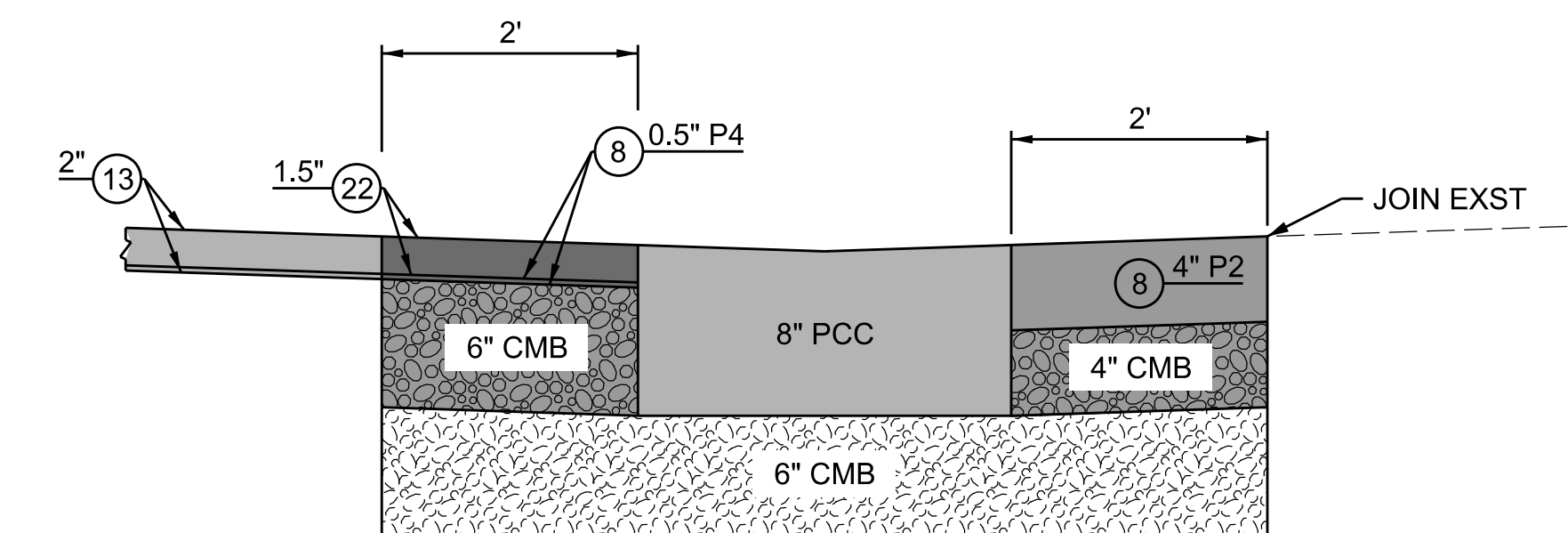
PH 086660 SHEET 7 OF 8

CADD PROJECT FILE NAME: \$FILESS\$  
CHECKER: S. DICKSON  
DESIGNER: A.T. NGUYEN  
DRAFTER: ATN, MG



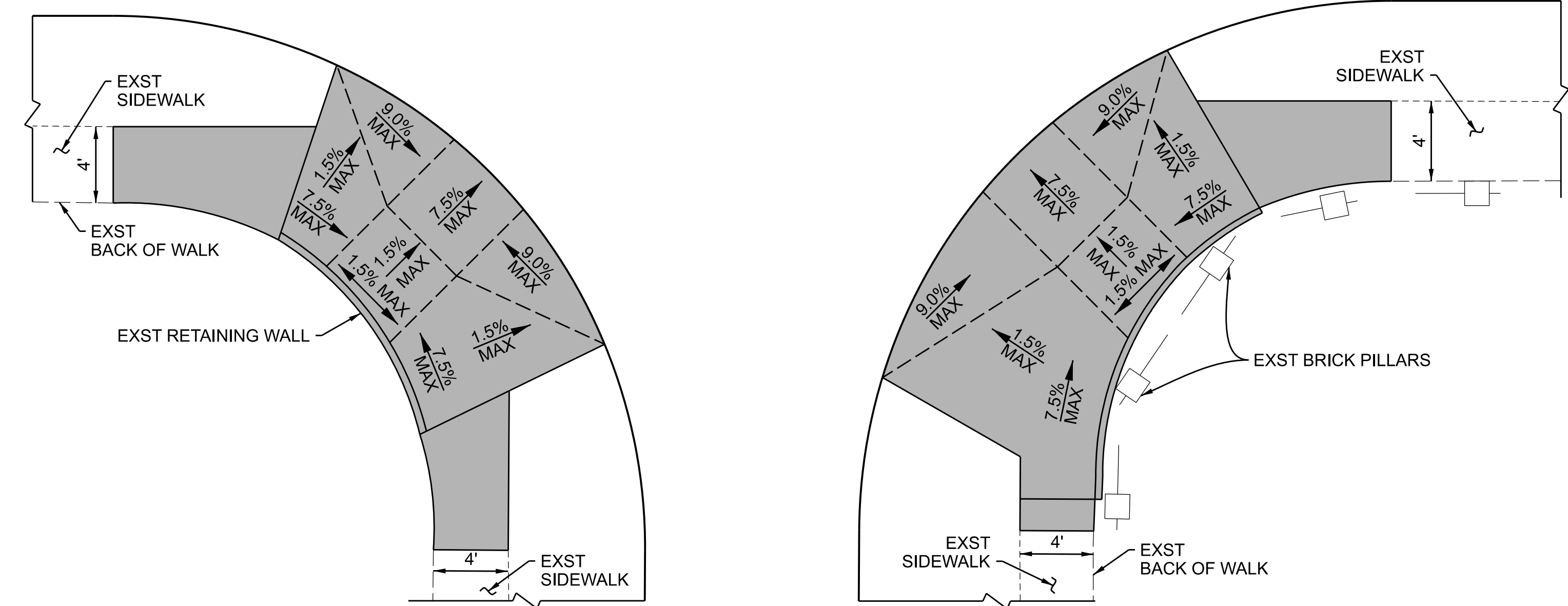


CURVE DATA				
CURVE	RADIUS	CENTRAL ANGLE	LENGTH	TANGENT
(A)	27	90 20'38"	42.57'	27.16
(B)	27	89 39'22"	42.25'	26.84



SECTION E-E  
NO SCALE

DETAIL "CROSS GUTTER"  
FROM SHEET 6  
SCALE: 1" = 10'



CURB RAMP DETAIL  
NO SCALE

CADD PROJECT FILE NAME: \$FILEL3  
 CHECKER: S. DICKSON  
 DESIGNER: A.T. NGUYEN  
 DRAFTER: ATN, MG

DATE	MARK	DESCRIPTION
5/18/2022	■	AS-BUILT
1/6/22	△	EXTENDED RECONSTRUCTED AREA
11/17/21	▲	ADDED CURB RAMP DETAIL
REVISIONS		



PROJECT ENGINEER: Angie T. Nguyen  
DATE: 9/15/20

LOS ANGELES COUNTY PUBLIC WORKS

**WEST CARSON COMMUNITY BIKEWAYS**

PROJECT ID NO. RDC0016229

DETAIL

PH 086660 SHEET 8 OF 8