

**CONSTRUCTION LEGEND**

- ① PORTLAND CEMENT CONCRETE CURB AND GUTTER
- ⑦ PORTLAND CEMENT CONCRETE PAVEMENT ON BASE MATERIAL

**CONSTRUCTION SYMBOLS**

- # INDICATES WORK PER CONSTRUCTION LEGEND
- ltr. CURVE DATA SHOWN IN TABLE ON PLAN
- <sup>2" P4</sup> ABOVE LINE: INDICATES THE TYPE OF STANDARD OR THICKNESS OF SURFACE MATERIAL IN INCHES, STANDARD PLAN VARIABLES; CURB RAMP CASE, TYPE, SECTION AND DETAIL; OR TREE PLANTING CASE
- <sub>5" CMB</sub> BELOW LINE: REFERENCE TO DETAIL OR THICKNESS OR BASE MATERIAL IN INCHES OR TREE WELL CASE
- MT  $\frac{W}{L}$  MEDIAN TAPER PER STD PLAN 140-3

**CONSTRUCTION NOTES**

1. STANDARD PLANS REFERENCED ARE PER THE STANDARD PLANS FOR PUBLIC WORKS CONSTRUCTION (SPPWC) UNLESS OTHERWISE NOTED.
2. ALL FIELD BOOK REFERENCES ARE TO LOS ANGELES COUNTY DEPARTMENT OF PUBLIC WORKS FIELD BOOKS, UNLESS OTHERWISE NOTED.
3. THE WORK SHOWN ON THESE DRAWINGS REQUIRES THE PRIME CONTRACTOR TO HAVE A VALID CLASS A LICENSE ISSUED BY THE STATE OF CALIFORNIA.
4. NOT ALL EXISTING UTILITIES ARE KNOWN NOR SHOWN ON PLANS.
5. SEAL ALL JOINTS BETWEEN EXISTING CONCRETE PAVEMENT AND PROPOSED PCC GUTTER OR PAVEMENT PER JOINT SEALING DETAIL ON SH 3.
6. PLACE 6 INCHES OF CMB UNDER PROPOSED WALKS AND CURB & GUTTER.

**ABBREVIATIONS**

ABBREVIATION	WORD OR WORDS
AC	ASPHALT CONCRETE
BC	BEGINNING OF CURVE
BCR	BEGINNING OF CURB RETURN
BM	BENCH MARK
C&G	CURB AND GUTTER
CL	CENTER LINE
CMB	CRUSHED MISCELLANEOUS BASE
CMP	CORRUGATED METAL PIPE
CONST	CONSTRUCT, CONSTRUCTION
CY	CUBIC YARD
DIA	DIAMETER
EC	END OF CURVE
ECR	END OF CURB RETURN
EG	EDGE OF GUTTER
EL	ELEVATION
EXST	EXISTING
FL	FLOW LINE
FS	FINISHED SURFACE
H	HORIZONTAL
L	LENGTH
LCB	LEAN CONCRETE BASE
LACPW	LOS ANGELES COUNTY PUBLIC WORKS
MAX	MAXIMUM
MIN	MINIMUM
PRC	POINT OF REVERSE CURVE
PROP	PROPOSED
SF	SQUARE FOOT
SPPWC	STANDARD PLANS FOR PUBLIC WORKS CONSTRUCTION
STA	STATION
STD	STANDARD
R/W	RIGHT OF WAY
TC	TOP OF CURB
TYP	TYPICAL
V	VERTICAL
W	WIDTH

**STANDARD PLANS**

STANDARD PLAN	DESCRIPTION
113-2	SIDEWALK AND DRIVEWAY REPAIR
120-2	CURB AND GUTTER - BARRIER
132-3	CONCRETE PAVEMENT REPLACEMENT
140-3	MEDIAN TAPER

**REFERENCES**

SURVEY FIELD NOTES: PWFB 1129, PG 3026

**TOPOGRAPHY LEGEND**

TOPOGRAPHY	EXISTING TOPOGRAPHY	PROPOSED IMPROVEMENTS
CURB		
CURB AND GUTTER		
GUTTER		
PAVEMENT		
CONCRETE		
AC		
CURB RAMP		
BUILDING		
FENCE		
GUY POLE		
DRIVEWAY		
FIRE HYDRANT		
GUY WIRE		
MANHOLE		
POLE		
R/W LINE		
PULL BOX		
SIDEWALK		
SIGNAL CONTROL BOX		
SIGNAL FLASHING		
TRAFFIC		
STREET LIGHT		
PALM TREE		
OAK TREE		
OTHER TREE		
VALVE		
VAULT		

CADD PROJECT FILE NAME: 7TH AVE CIVIL DESIGN.DGN  
 CHECKER: C. CHEN  
 DESIGNER: J. DU  
 DRAFTER: J. DU

DATE	MARK	DESCRIPTION
9/28/2022	■	AS-BUILT REVISIONS
REVISIONS		



PROJECT ENGINEER: *Jefferson Du* DATE: 3/25/21

LOS ANGELES COUNTY PUBLIC WORKS

**7TH AVE COMMUNITY IMPROVEMENTS**  
GALE AVENUE TO PALM AVENUE

PROJECT ID NO. RDC0016469  
NOTES AND REFERENCES

DWG XXXXXXX ■ PD XXXXXX ■ SHEET 1 OF 3

**AS-BUILT REVISIONS** PLAN RD

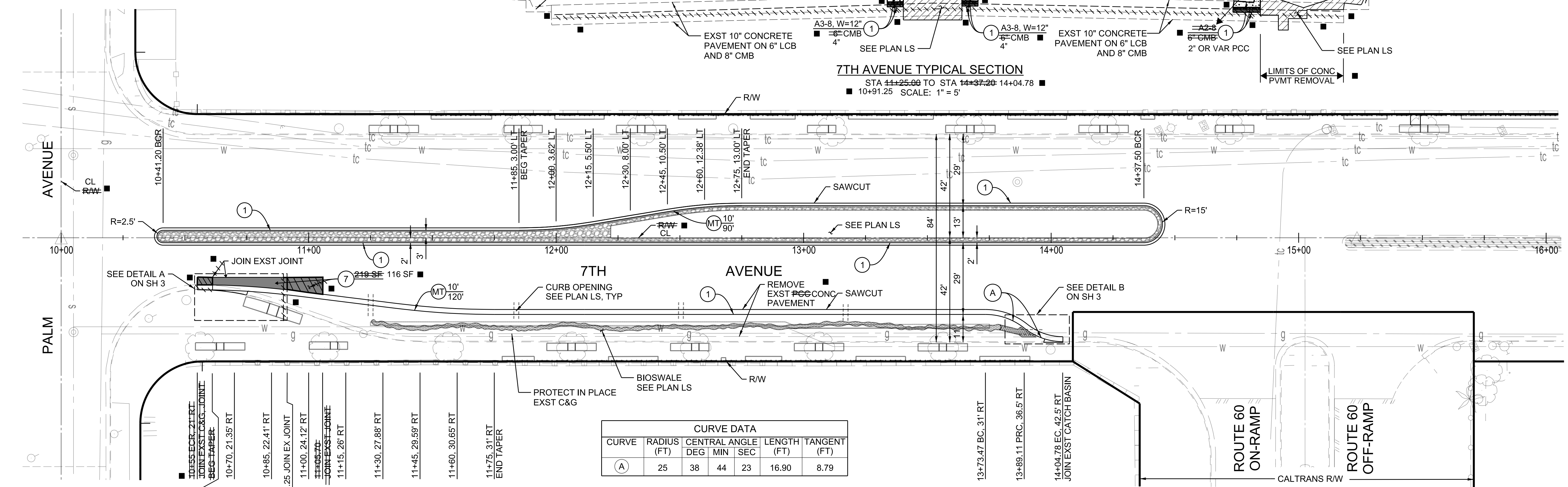
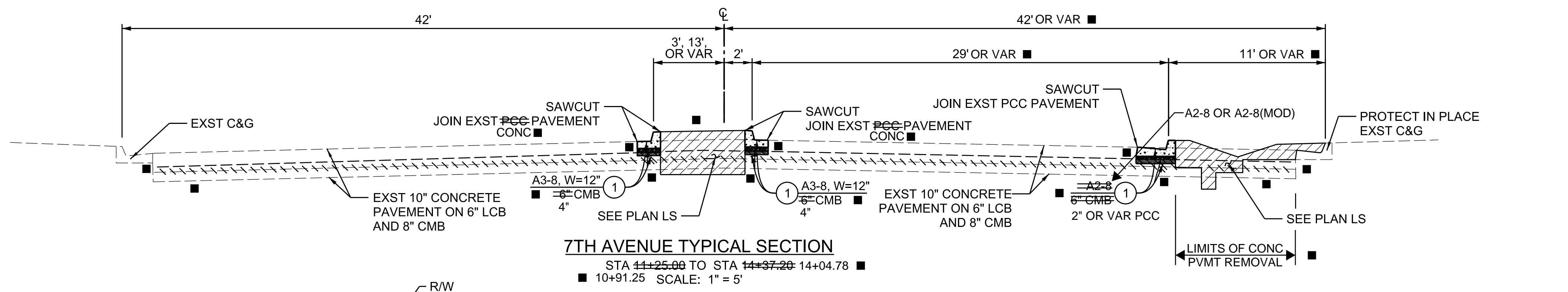
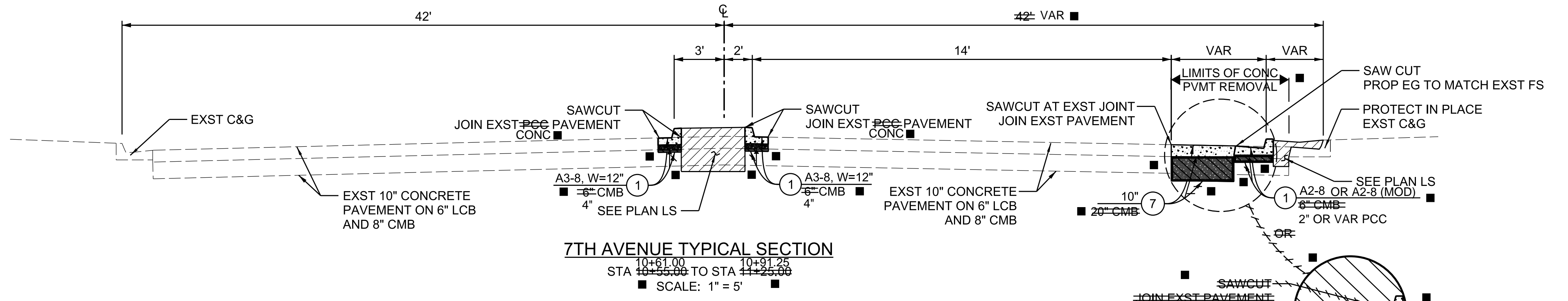
**BENCHMARK G1591A**  
 PWFB 1129 PAGE 3026  
 EL 402.544 WHITTIER 2005 ADJ. NAVD 88  
 SM SPK. N CB 16.4 E/O BCR @ NE COR 7TH AVE & PALM AVE

**PCC WALK, 4" THICK REPLACEMENT**

STATION	LENGTH (FT)	WIDTH (FT)
15+47	4	4.5
17+01	8.5	4.5
17+56	6	5
19+32	3	4.5
19+71	9.5	5.5

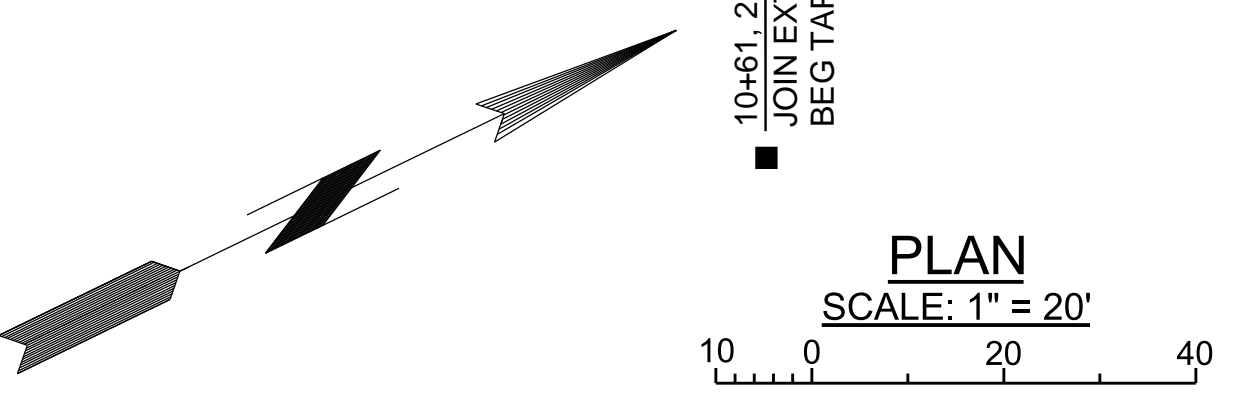
**PCC CURB & GUTTER, TYPE A2-8 REPLACEMENT**

BEGIN STATION	END STATION	LENGTH (FT)
19+53	19+75	22

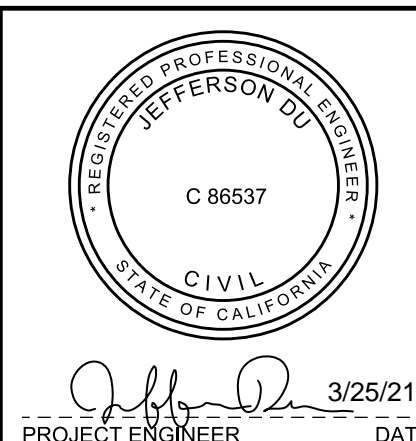


**CURVE DATA**

CURVE	RADIUS (FT)	CENTRAL ANGLE (DEG MIN SEC)	LENGTH (FT)	TANGENT (FT)
(A)	25	38 44 23	16.90	8.79



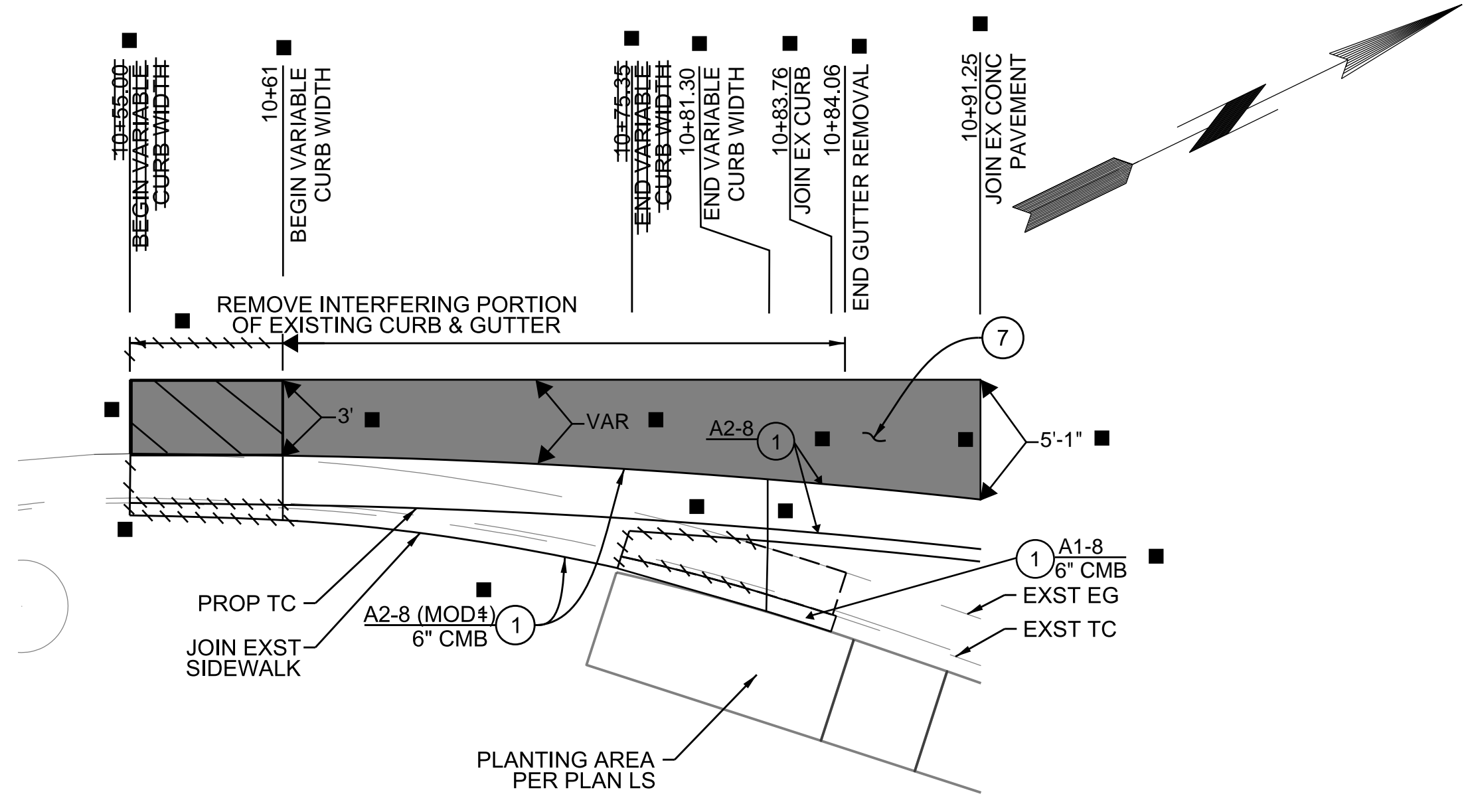
DATE	MARK	DESCRIPTION
9/28/2022	■	AS-BUILT REVISIONS
REVISIONS		



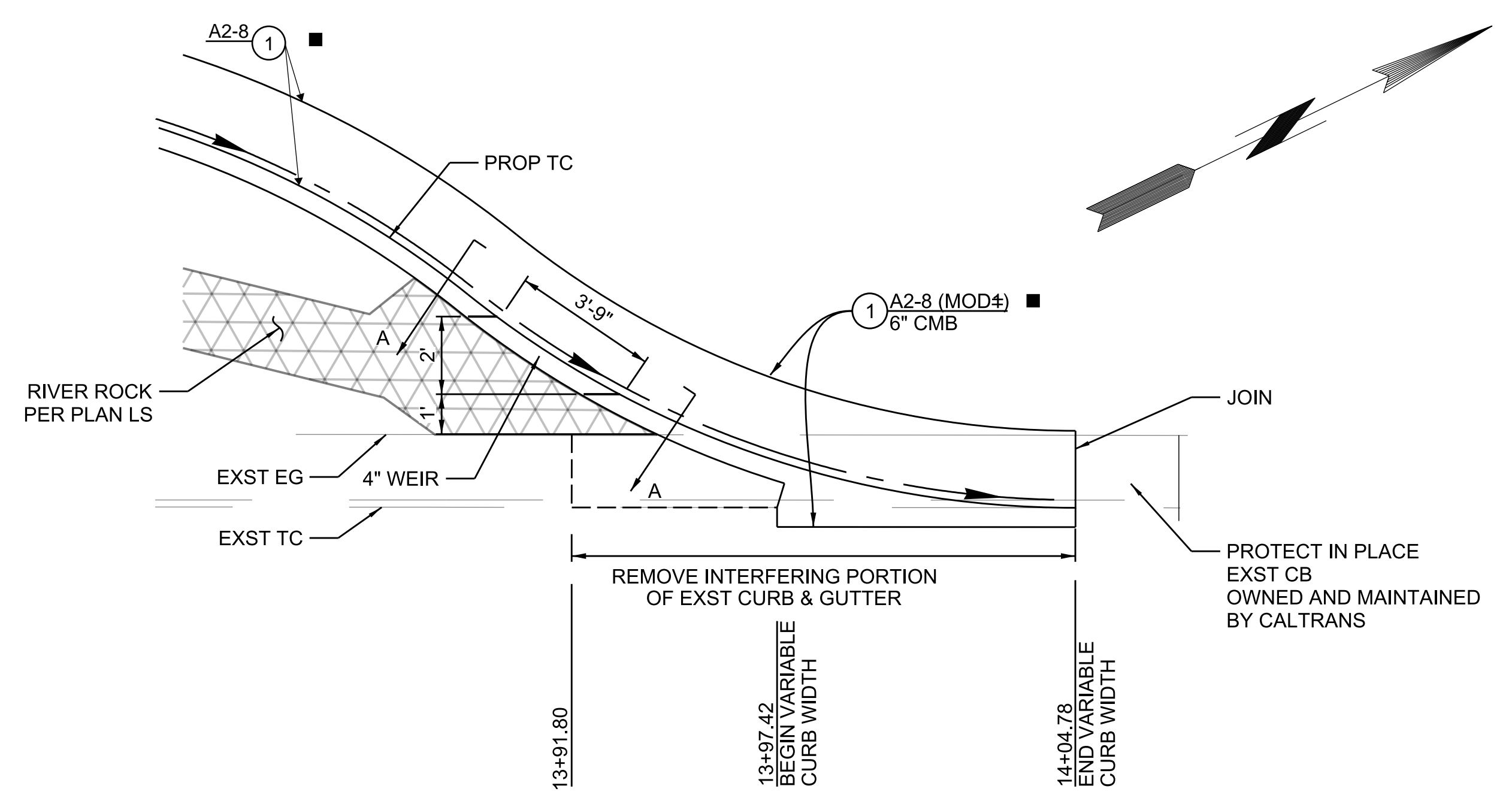
LOS ANGELES COUNTY PUBLIC WORKS  
**7TH AVE COMMUNITY IMPROVEMENTS**  
 GALE AVENUE TO PALM AVENUE  
 PROJECT ID NO. RDC0016469  
 PLAN  
 SHEET 2 OF 3

**AS-BUILT REVISIONS** PLAN RD

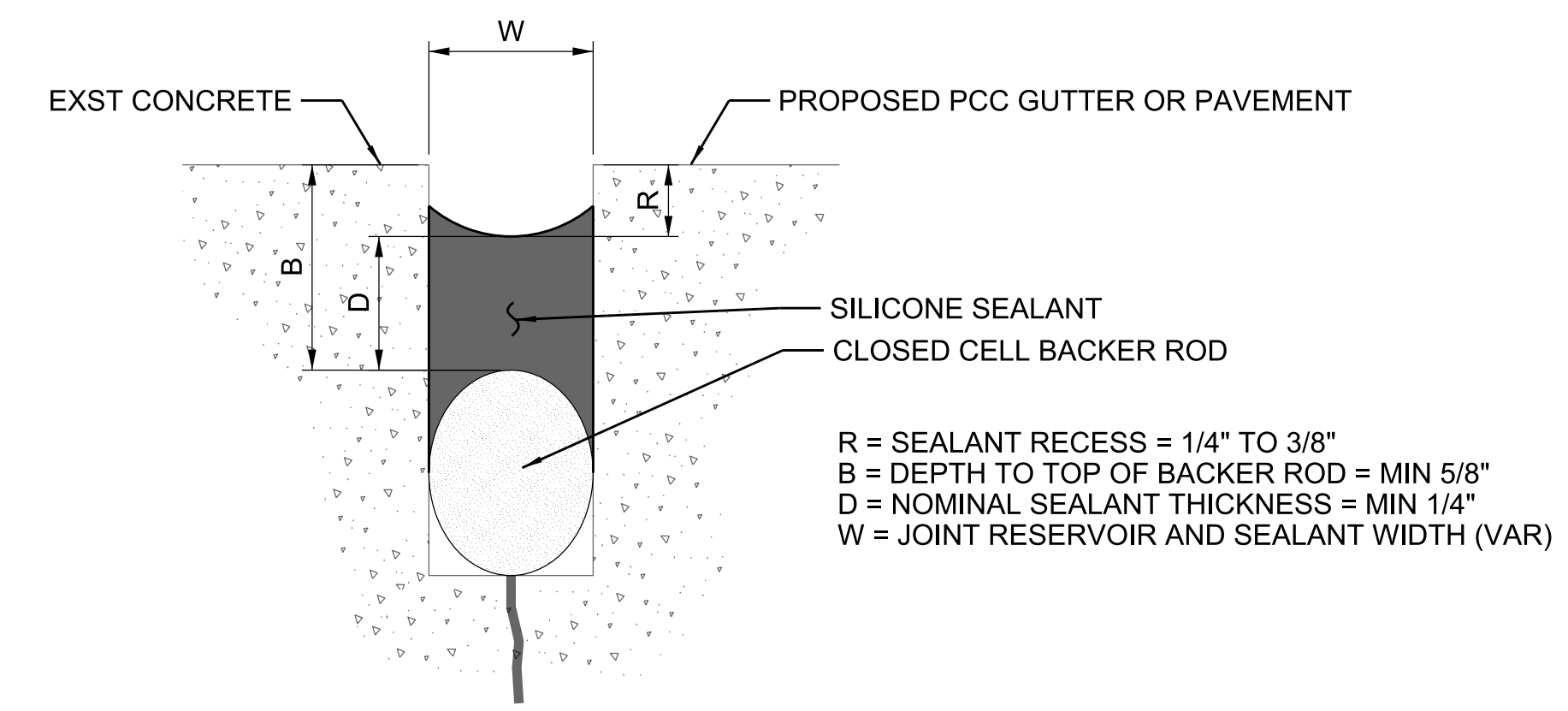
CADD PROJECT FILE NAME: 7TH AVE CIVIL DESIGN.DGN  
 CHECKER: C. CHEN  
 DESIGNER: J. DU  
 DRAFTER: J. DU



**DETAIL A**  
NOT TO SCALE

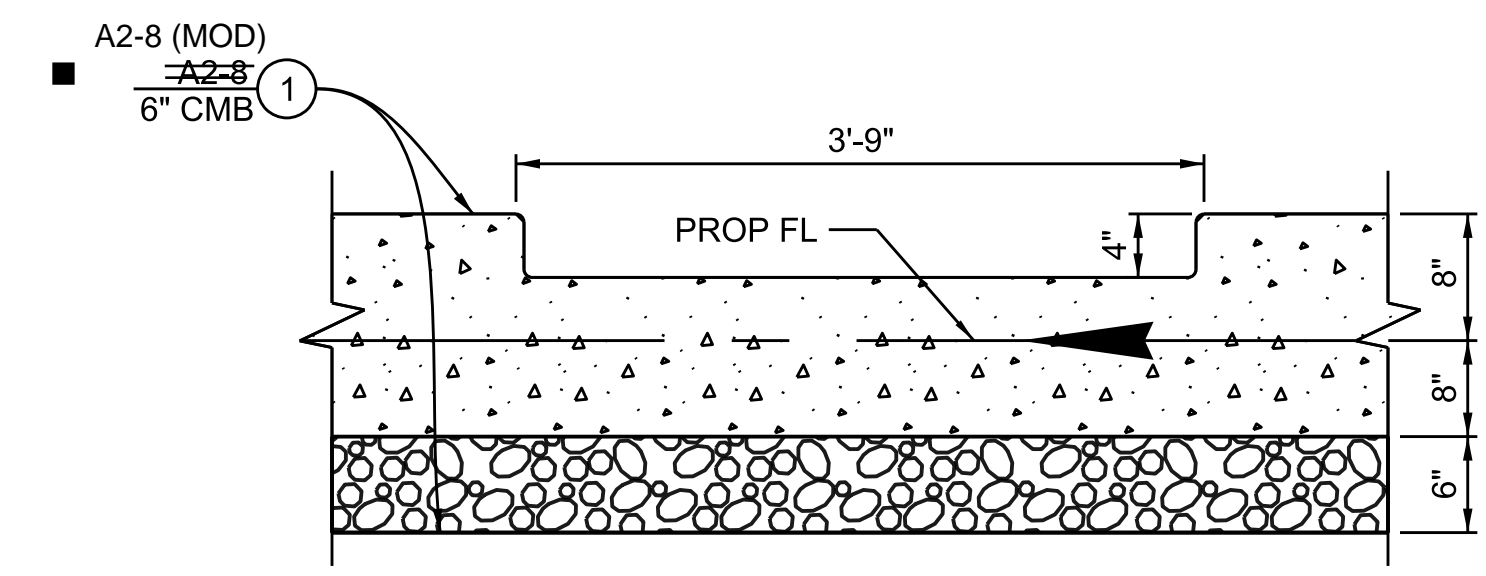


**DETAIL B**  
NOT TO SCALE



**JOINT SEALING DETAIL**  
NO SCALE

R = SEALANT RECESS = 1/4" TO 3/8"  
 B = DEPTH TO TOP OF BACKER ROD = MIN 5/8"  
 D = NOMINAL SEALANT THICKNESS = MIN 1/4"  
 W = JOINT RESERVOIR AND SEALANT WIDTH (VAR)

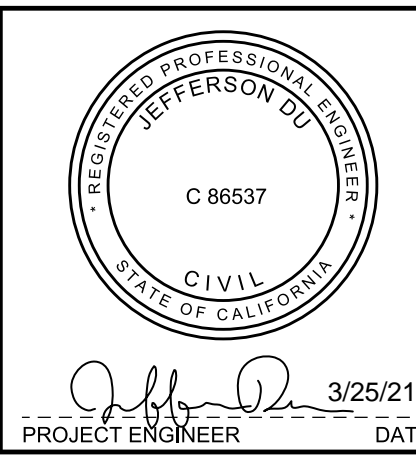


**SECTION A-A**  
NO SCALE

NOTES:  
 ALL EXPOSED CORNERS SHALL BE ROUNDED WITH A 1/2" RADIUS

CADD PROJECT FILE NAME: 7TH AVE CIVIL DESIGN.DGN  
 CHECKER: C. CHEN  
 DESIGNER: J. DU  
 DRAFTER: J. DU

DATE	MARK	DESCRIPTION
9/28/2022	■	AS-BUILT REVISIONS
REVISIONS		



LOS ANGELES COUNTY PUBLIC WORKS

**7TH AVE COMMUNITY IMPROVEMENTS**  
GALE AVENUE TO PALM AVENUE

PROJECT ID NO. RDC0016469  
DETAILS

SHEET 3 OF 3

**AS-BUILT REVISIONS** PLAN RD